

2023 June Area Survey Presentations

First 13 topics:

1. [Introduction - 2](#)
2. [June Area Purpose - 7](#)
3. [Maps and Photos - 31](#)
4. [Screening Form - 44](#)
5. [Facepage, Sec. A, C - 74](#)
6. [Section D – 90](#)
7. [Sec. E-F - 110](#)
8. [Sec G \(Hogs\) - 130](#)
9. [Sec H \(Cattle\) – 148](#)
10. [Sec I-K – 157](#)
11. [Sec L-N – 165](#)
12. [Sec O \(Technology\) – 181](#)
13. [Sec P, Conclusion - 192](#)

The last topic (CAPI-related) does not have accompanying slides.



Introduction to June Area 2023

[Click Here to
return to
List of Topics](#)



John Stephens
Pacific Regional Field Office



United States Department of Agriculture
National Agricultural Statistics Service



Videos

- Introduction (this one)
- Purpose of June Area
- Maps and Photos
- Screening Form
- Facepage, Sec. A and C:
Operation Description, Sections to be Completed
- Sec. D: *Crops and Land Use on Tract*
- Sec. E-F: *Total Acres Operated and Land Use, Storage*
- Sec. G: *Hogs*
- Sec. H: *Cattle*
- Sec. I-K: *Sheep, Goats, Equine*
- Sec. L-N: *Labor, Land Values, Economic Data*
- Sec. P, Conclusion: *Personal Characteristics*
- CAPI Video



Changes from Last Year

- **Admin**

- Use project code 124 (June Area) for both prescreening and survey collection. We eliminated project code 166.
- In person interviews are allowed

- **Section A**

- Removed questions in the tract questionnaire included in census years

- **Section D**

- Updated the office use box (7793)



Changes from Last Year

- **Section D, F, and K: (Operation Description)**
 - State specific changes in Kentucky, Louisiana and New York
- **Section N: Census “points” page**
 - Removed
- **Section O: Technology Use**
 - Added to the Tract questionnaire, with some skip logic



Thank you!



United States Department of Agriculture
National Agricultural Statistics Service





United States Department of Agriculture
National Agricultural Statistics Service



[Click Here to
return to
List of Topics](#)

June Area Training

(Project Code 124)



Cody Brokmeyer
Deputy Director, Southern Plains Region



June Area Training

(Project Code 124)

Why is NASS Data Important?

Why Should Operators Respond?

How Does June Area Fit In?



NASS Mission Statement

*“To Provide timely, accurate, and useful statistics
in service of US Agriculture.”*

- **Timely:**
 - Provide objective and unbiased statistics on a preannounced schedule that is fair and impartial to all market participants.
 - Surveys revolve around a reference date with data collection times dictated by specific due dates.
 - Example: Yield reports have a congressional mandate - data has to be published around the 12th of the month, and still reference the 1st of the month.



NASS Mission Statement

*“To Provide timely, accurate, and useful statistics
in service of US Agriculture.”*

- **Accurate:**
 - Gather data in a confidential, systematic, unbiased way.
- **Useful:**
 - Provide publicly available results benefiting the entire industry.
 - Helps create a stable economic atmosphere and reduced production risk



About NASS

National Agricultural Statistics Service

The Fact Finders for American Agriculture

- One of 17 agencies within the USDA
- Washington DC headquarters unit
- 12 Regional Field Offices
- St. Louis National Operations Division
- 4 Data Collection Centers (DCCs)
St. Louis, Arkansas, Oklahoma, Montana/Wyoming



About NASS (continued)

- Surveys farmers & ranchers each year:
 - Mail, Internet, Telephone, Personal Interviews
 - Data is free and publicly available
 - Hundreds of statistical reports published annually
- Every 5 years – complete Census of every *U.S. agricultural operation*

About NASS (continued)

What We Are **NOT**

- We are **NOT** political appointees
- We are **NOT** a regulatory body
- We are **NOT** policymakers
- We are **NOT** market commentators
 - NASS provides data and users interpret how it applies to their situation



Confidentiality

- Information we gather is personal and sensitive.
- Laws and regulations governing NASS **guarantee** respondents that information given will be kept strictly confidential and used for statistical purposes only.



Confidentiality (continued)

- Data must never be shared or discussed with anyone who is not a NASS employee.
 - Enumerators must not discuss data with family, friends, or colleagues.
- To protect the public trust - No breach of confidentiality will be tolerated.
 - Signed Confidentiality Certificate
 - A breach of confidentiality is grounds for immediate dismissal.
 - Violators may also face a fine of \$250,000 and a sentence of up to five years imprisonment.

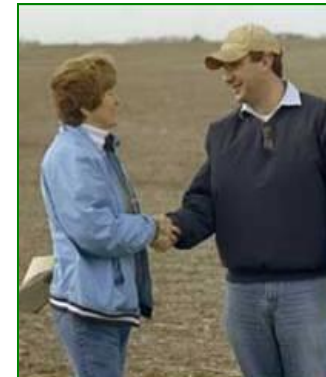


Confidentiality - PII

- Personally Identifiable Information (PII)
 - Names
 - Addresses
 - Phone Numbers
 - Data
- Must be protected at all times, not just when mailing!
Please keep confidential and secure at all times.

Our Job: Trust and Respect

- We are honest and impartial in the performance of our duty, and trustworthy in our interactions with others.
- Why is this important?
 - Most surveys are voluntary.
 - Key to operator participation - Won't share information if trust and respect are missing.
 - Affects our credibility.
 - People's livelihoods depend on our data.
 - As a government agency, this is our mandate.



Your Role - NASDA

National Association of State Departments of Agriculture 

- A nonpartisan, nonprofit association representing the elected and appointed commissioners, secretaries, and directors of the departments of agriculture in all fifty states and four U.S. territories.
- NASDA enhances agriculture by:
 - Forging partnerships
 - Creating consensus for sound policy outcomes between state departments of agriculture, the federal government, and stakeholders.





Your Role (continued)

National Association of State Departments of Agriculture **NASDA**



Partnerships

- Measuring Agriculture's Success
 - Employs over 3,000 enumerators to collect agricultural data for the National Agricultural Statistics Service (NASS). *This partnership began in 1972.*
- Promoting Agriculture
 - Instrumental in Farm Bill policy
 - Conducts two trade shows through USDA's Foreign Agricultural Service (FAS) Market Access Program (MAP). These shows are held annually in Chicago and Miami and attract buyers from around the world seeking American agricultural products.
- Food Safety
 - The data collected provides critical information to help plan and carry out implementation of a national produce safety rule and the preventive controls for animal food rule. (Partnership with FDA)

NASS/NASDA Relationship

A cooperative partnership. NASS determines what services are needed, how & when they are delivered, and whether or not the service is acceptable.



NASDA, in turn, provides those services.



NASS Responsibilities

- Defines surveys
- Methodology and Criteria
- Provides training
- Furnishes assignments, forms, supplies, specialized equipment, etc.
- Monitors job performance
- Provides feedback

NASDA Responsibilities

- Employs & manages enumerators
- Hires, promotes & dismisses enumerators
- Enumerators conduct most of the interviews

Why ***YOU*** Are Important

- You (*the enumerator*) are Vital to the success of NASS:
 - You are *the* data collectors.
 - You are the public “voice” of NASS.
 - You are the key to quality information.



USDA AGRICULTURE COUNTS United States Department of Agriculture National Agricultural Statistics Service

Subscriptions: [National](#) | [State](#) | [News](#)

Search NASS

Data & Statistics Publications Newsroom Surveys Census About NASS Contact Us Help

Today's Reports [View previous reports](#)

May 03, 2017

Broiler Hatchery Report pending ...
Released at 3:00 pm ET

This page will automatically refresh with links to the reports when they are released in: 1 hours 59 minutes 15 seconds.
If they do not, [click here](#) to manually refresh.

Interactive Data Visualization

Click for data visualization on crop and livestock production.

Headlines

04/20/17 **STAKEHOLDER RELEASE: USDA to Hold Expert Panel Meeting on Publication of Farm Operator Demographics** Public Comments Welcomed

Find Data and Reports by:

Twitter **Blog**

USDA-NASS @usda_nass
#WestVirginia days suitable for fieldwork: 4.4

Teamwork



On Time: We meet published due dates and deliver high quality service to customers.

Error-Free: We strive to release official estimates without error, removing the need to issue errata.

Accurate: We strive to provide the best official estimates the first time, minimizing the need for revisions.

- Work together to ensure timeliness, accuracy, and usefulness.
- Support team & NASS values



Purpose of Surveys

- **Why have Agricultural Surveys in General?**
 - NASS is responsible for preparing County, State and National crop and livestock estimates for the USDA.
 - Agricultural Surveys obtain data from farmers and ranchers all over the Nation.
 - These surveys provide the basis for estimates of this season's crop production and supplies of grain in storage.
 - Survey results also provide the foundation for setting livestock and poultry inventory numbers.

Purpose of Surveys (Continued)

- **Why have Agricultural Surveys in General?**
 - Estimates derived from these surveys supply basic information needed by farmers to make decisions for both short-term and long-range planning. These estimates might influence a farmer to:
 - Increase or reduce production.
 - Place more or fewer cattle on feed.
 - Expand or build a new facility or acquire more land.
 - Plant or harvest a particular crop.
 - Hold or sell crops now in storage, etc.

Who Uses This Data?

- Farmers and ranchers:
 - Make decisions about what and how much to grow or raise.
 - Develop marketing plans and determine best time to sell stored crops.
- Agribusinesses/Processors:
 - Help food processing plants, farm input companies, and other businesses decide where to locate their operations so they're close to areas of heavy production.
 - Serve producers more cost-effectively.



Who Uses This Data? (continued)

- Government agencies:
 - Determine key legislative decisions for the industry.
 - Plan and administer Federal and State programs in areas such as consumer protection, conservation, foreign trade, education, and recreation.
- Media:
 - Create context for news stories.
 - Inform readers and promote industry issues.



Where are the Data?

NASS publishes nearly 500 agriculture statistical reports each year.
PLUS many other publications at the individual state level.

Go to www.nass.usda.gov/

Click on the tab “Publications”

From here, you can find:

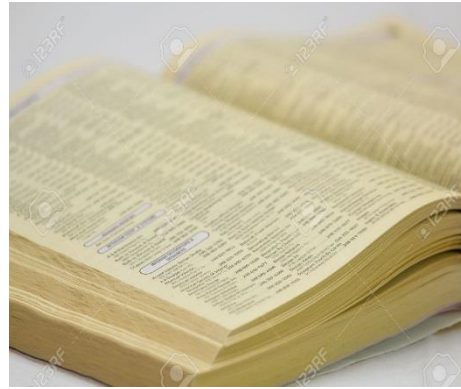
- The most requested reports
OR
- a specific report by month or topic



The 3 Types of NASS Surveys

CENSUS OF AGRICULTURE

- **Census**
 - Everyone (*we know of*)
 - Every 5 years



- **List**
 - Directory
 - Incomplete



- **Area**
 - Complete

June Area: Big Picture Objective

- Find the segment
- Find all operators in the segment (not necessarily land *owners*)
- Assign each operator a tract letter
- Account for all operators in the screener
- Screen for Agriculture
 - Crops, livestock, grain storage
- Account for all agriculture in an Ag Tract Questionnaire
- Account for all land in the segment



United States Department of Agriculture
National Agricultural Statistics Service



THANK YOU FOR WATCHING.



United States Department of Agriculture
National Agricultural Statistics Service



[Click Here to
return to
List of Topics](#)

Maps and Photos



Justin Cech
Northern Plains Region

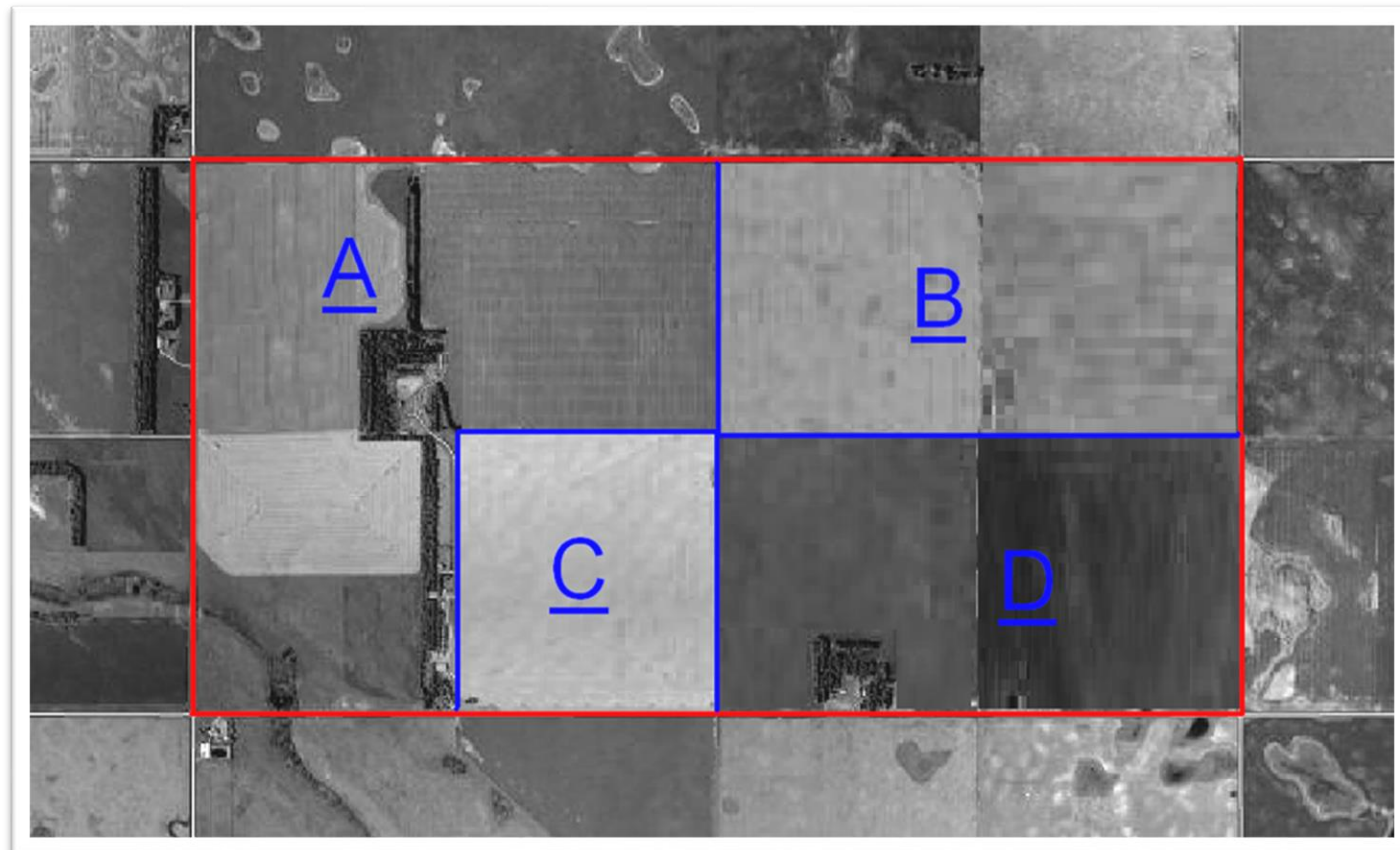
Key Terms

- Segment: sampled land area with identifiable boundaries



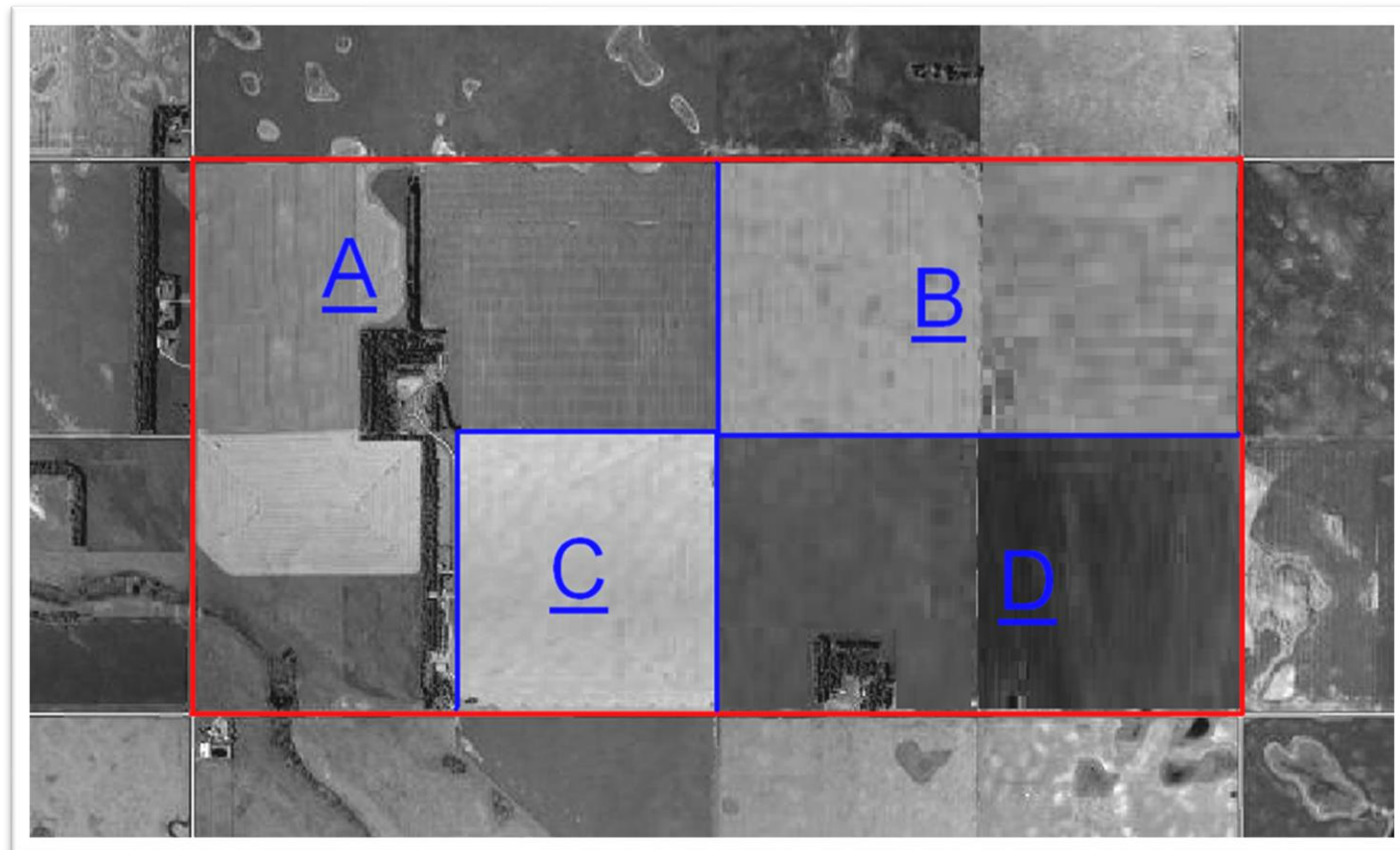
Key Terms

- Segment: sampled land area with identifiable boundaries
- Tract: land inside segment under one operating arrangement



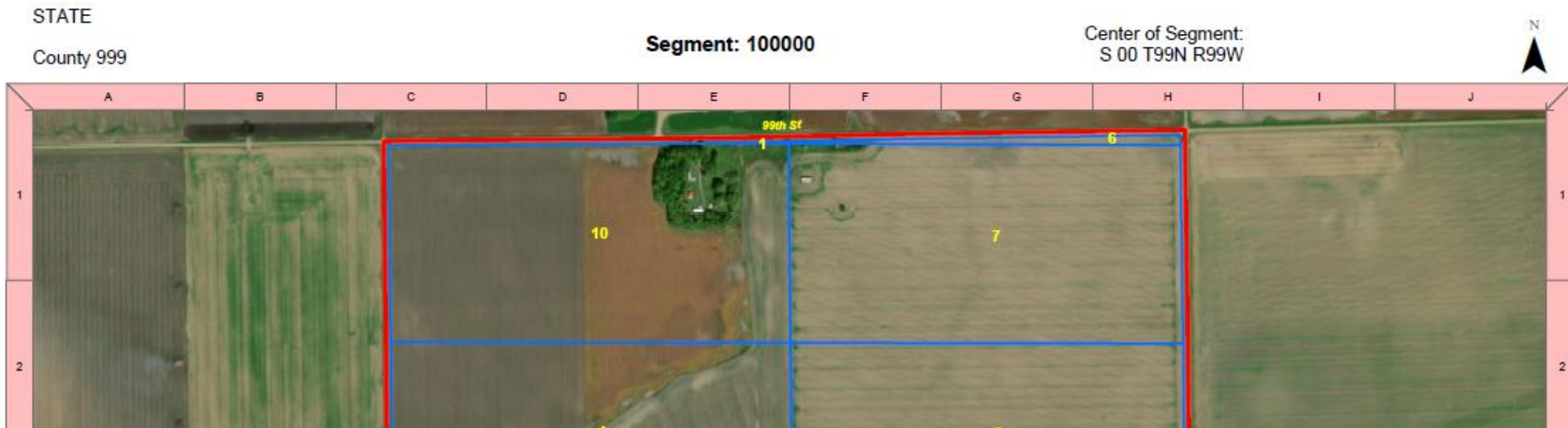
Key Terms

- Segment: sampled land area with identifiable boundaries
- Tract: land inside segment under one operating arrangement
- Field: continuous area of land devoted to one crop or land use



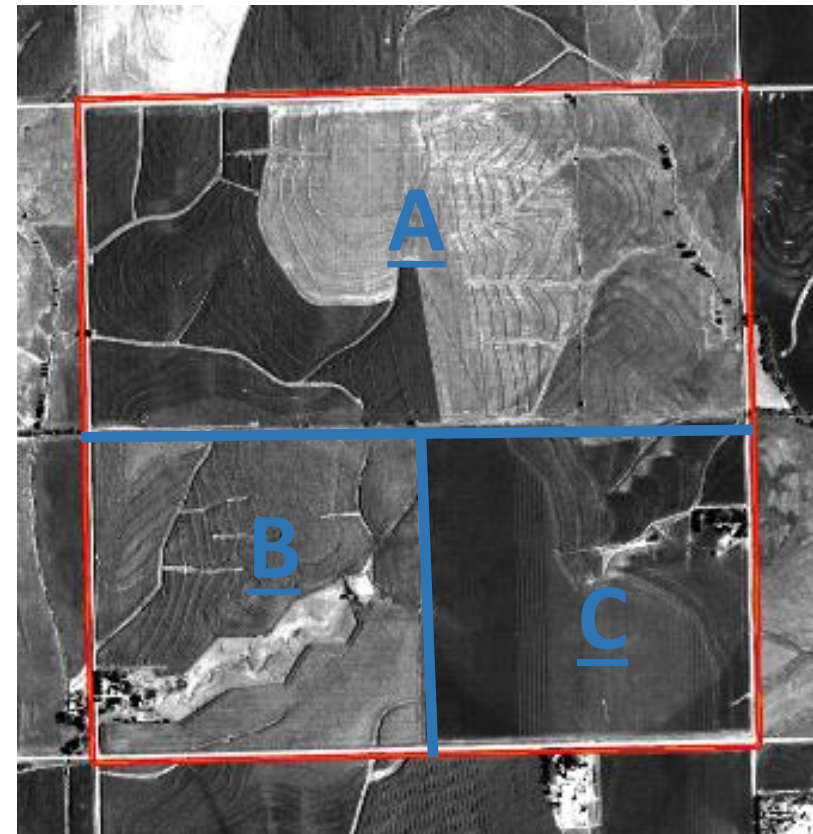
Parcel/County Maps

- Familiarize yourself with the Segment location on the parcel/county maps
- Utilize the alpha-numeric grid system on the Parcel/FSA map
- The Township, Range & Section numbers are printed on the Top Right
- The Survey Code for agcounts.usda.gov is printed on the blue screening jacket



Aerial Photos

- Determine Segment and Tract boundaries
- Estimate acreages
- Photos are used for 5-7 years
- Drawing Lines
 - Use a straight-edge whenever possible
- Care
 - Store in box provided
 - Protect from dirt and weather
 - Use photo pens provided
 - DO NOT USE
SHARPIE PERMANENT MARKERS!!!



Assigning Tract Letters

- **Blue lines and CAPITAL letters**
 - Underline tract letters (AT LEAST N, Z, M, W, I, and H)
- Assign a separate tract letter for each operator.
 - If operation has two or more separate parcels in a segment, draw off each parcel separately, but assign the same tract letter.

John Jones <u>A</u>	Bill Riggs <u>B</u>	John Jones <u>A</u>
Susan Hall <u>C</u>		

Assigning Tract Letters

- A separate line and tract letter must be used for each land arrangement (individual, partnership, or managed), even if the same person is the operator.

John Jones (Individual Operation) <u>A</u>	John & Al Jones John Jones (Partnership) <u>B</u>	Able Farms Ron Fast (Managed Operation) <u>C</u>
Ron Fast (Individual Operation) <u>D</u>		

Assigning Tract Letters

Returning Segments

- If there is a new Tract operator, assign them the next unused letter

John Jones <u>A</u>	Bill Riggs <u>B</u>	Henry Adams <u>C</u>
Susan Hull <u>D</u>		

John Jones <u>A</u>	Bob White <u>E</u>	Henry Adams <u>C</u>
Susan Hull <u>D</u>		



Assigning Tract Letters

- Continuous non-ag tracts can be grouped together, drawn off and assigned one tract letter (NO AG POTENTIAL)
- Parcels of woods and idle open land should not automatically be considered non-agricultural

Example

Last Year

<div>Homer Simpson <u>A</u></div>	
<div>Ned Flanders <u>B</u></div>	<div>Barney Gumbal <u>C</u></div>

This Year

<div>Darth Vader <u>D</u></div>	<div>Han Solo <u>E</u></div>
<div>Luke Skywalker <u>G</u></div>	<div>Sky-Solo LLP. Luke Skywalker <u>H</u></div>
	<div>Princess Leah Han Solo Mgr. <u>F</u></div>
<div>Ned Flanders <u>B</u></div>	<div>Barney Gumbal <u>C</u></div>



And Remember

- Do not write names, addresses, crops, etc. onto aerial photo
- **Blue** = **Tract** Lines and Letters
- **Red** = **Field** Lines and Numbers (NO LONGER NECESSARY)
- Review
 - Segment Numbers
 - Tract Letters
- Check your work
 - Complete summary on back of screening form



Thank you for your hard work!



United States Department of Agriculture
National Agricultural Statistics Service



[Click Here to
return to
List of Topics](#)

Screening Form



Amber Elliott
Eastern Mountain Region

Screening Form

The Area Screening form is used to:

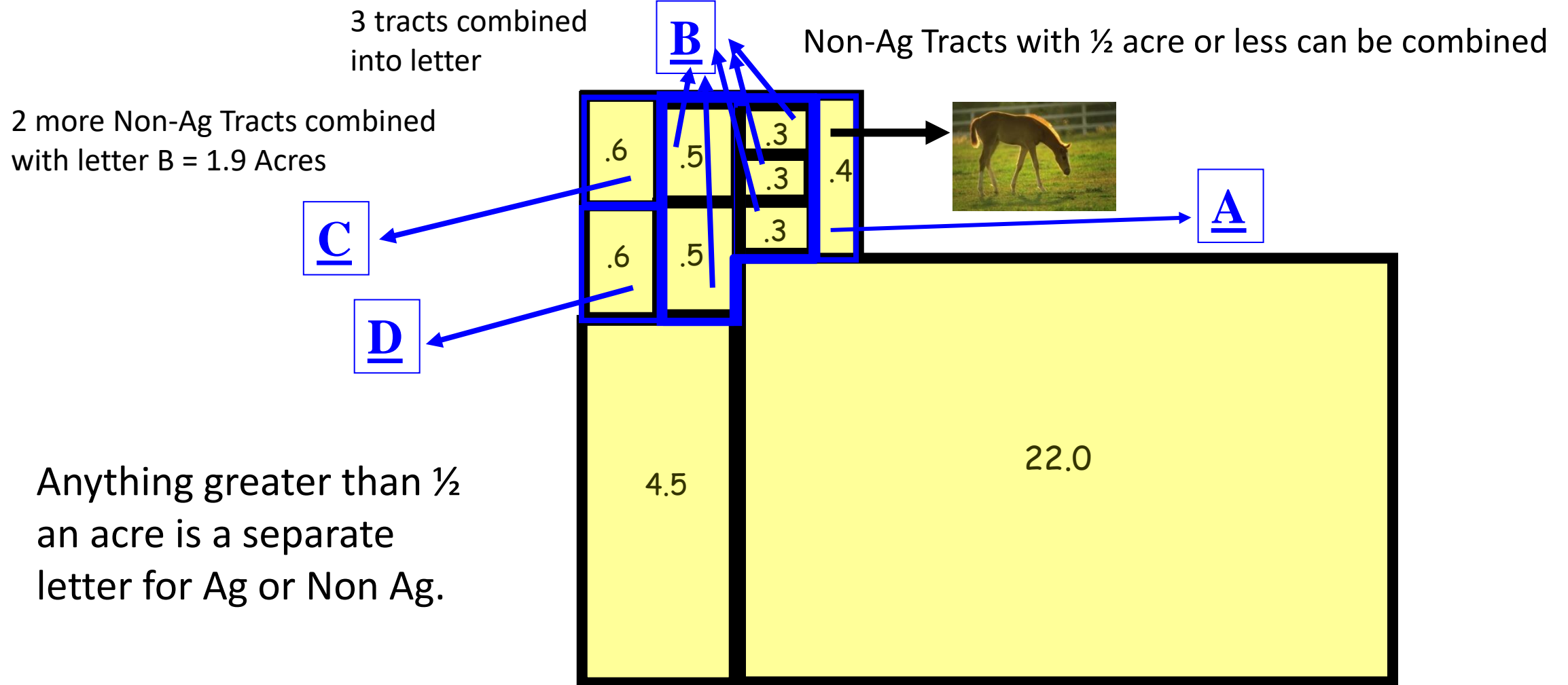
- Record the names and addresses of all tract operators
- Verify presence of ag activity or potential
- Enter the information into the June Area CAPI Instrument



What is the 1/2 Acre Rule

	Visible Ag Activity	No Visible Ag Activity
Under 1/2 Acre	<ul style="list-style-type: none">• Assign tract letter• Complete tract questionnaire	<ul style="list-style-type: none">• Assume non-ag tract
Over 1/2 Acre	<ul style="list-style-type: none">• Assign tract letter• Complete tract questionnaire	<ul style="list-style-type: none">• Interview operator to determine if they operate a farm

1/2 Acre Rule





Screening Form



[YEAR] JUNE AREA SURVEY SCREENING FORM - VERSION C

OMB No. 0535-0213
Approval Expires: 5/31/ [YEAR]
Project Code: 124
Survey ID: 3838



United States
Department of
Agriculture



NATIONAL
AGRICULTURAL
STATISTICS
SERVICE

USDA/NASS

National Operations Division
9700 Page Avenue, Suite 400
St. Louis, MO 63132-1547
Phone: 1-888-424-7828
Fax: 1-855-415-3687
Email: nass@usda.gov
KS, NE, NM, OK, TX

State	Stratum	Segment
<u>99</u>	<u>1855</u>	000 <u>103095</u>

INTRODUCTION

Part 1 of 1

County AGLAND

940

SURVEY CODE: 4800-12AB-CDEF



Online Parcel Map Instructions



If a respondent no longer has a copy of the map sent in the mail or if you are calling a respondent that was not mailed a packet, a copy of the map can be accessed on the web.

Part 1 of 1

County AGLAND

940

SURVEY CODE: 4800-12AB-CDEF

Survey Code is located on the front page of the screening form, underneath County Name.



Online Parcel Map Instructions



To access the web map:

GO TO www.agcounts.usda.gov

ENTER the Segment SURVEY CODE and click CONTINUE

Provide respondent with:

- Website
- Survey Code

Click on “Submit”



ENTER YOUR UNIQUE SURVEY CODE



SURVEY CODE

XXXXXXXXXX 01 01 2723 12222221
SURVEY CODE- 71 10000
MASS FARMS INC 20 123
LOVELY FARMER 00 307 359
12300 TRACTOR PL
SOMEWHERE SD 12345-6788

Submit & Get Survey(s)



Online Parcel Map Instructions



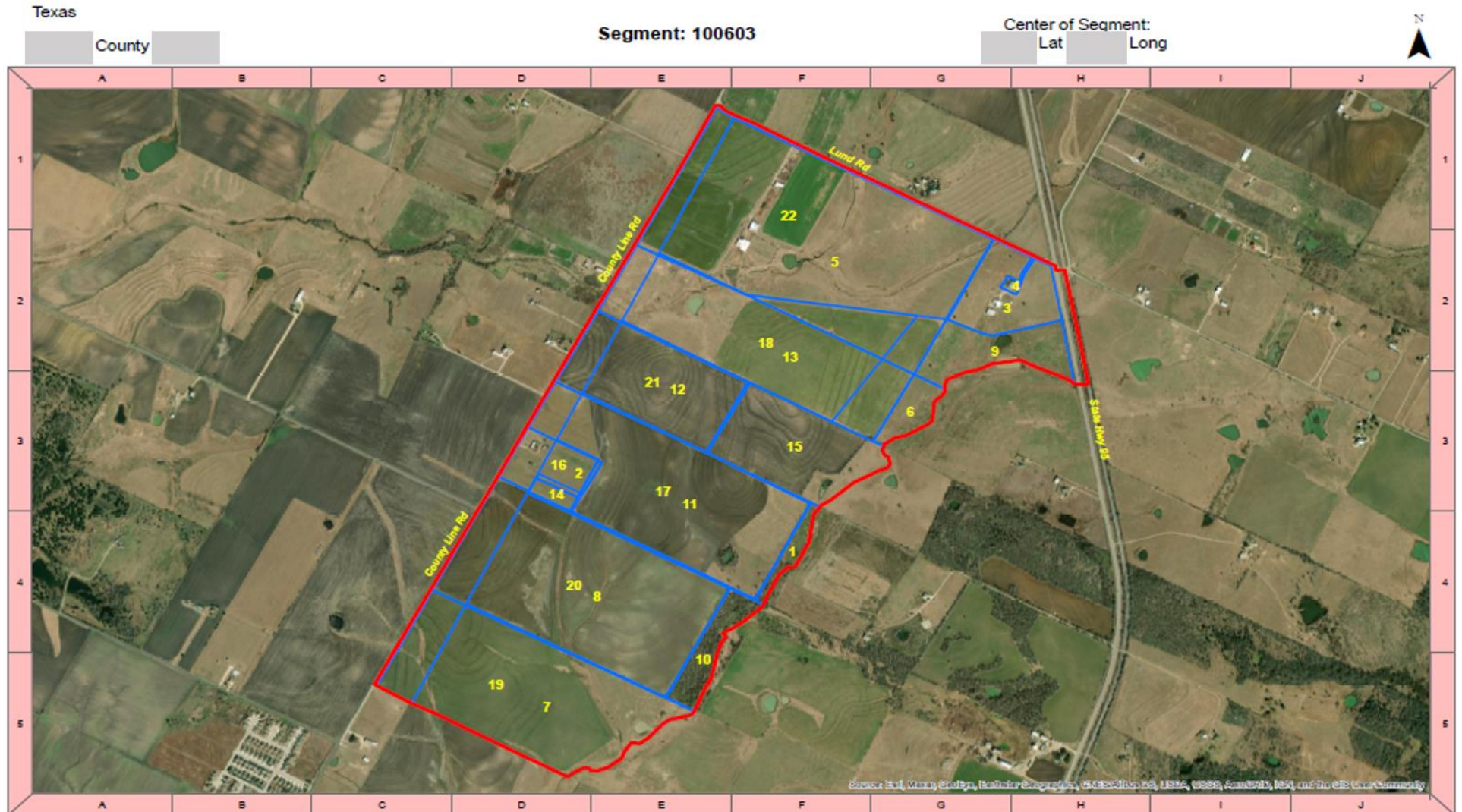
STATE: 31 SEGMENT: 130011 - NE - 31

Survey Name	Due Date	Status	Action
JUNE AREA SURVEY SCREENING FORM - 2023-06-01 - 3838 - 592347	Submit By: 06/11/2023	Available	Open Area Map

To go directly to the Segment Parcel Map, click on the Open Area Map icon.

Online Parcel Map Instructions

When the respondent has completed his/her review of the map, instruct them to close it.





Screening Form



INTRODUCTION

[Introduce yourself and ask for the operator. Rephrase in your own words.]

I am working on the June Agricultural Survey. This is a national survey where agricultural producers are asked to provide information on crops and livestock.

The information you provide will be used for statistical purposes only. Your responses will be kept confidential and any person who willfully discloses ANY identifiable information about you or your operation is subject to a jail term, a fine, or both. This survey is conducted in accordance with the Confidential Information Protection and Statistical Efficiency Act of 2018, Title III of Pub. L. No. 115-435, codified in 44 U.S.C. Ch. 35 and other applicable Federal laws. For more information on how we protect your information please visit: <https://www.nass.usda.gov/confidentiality>. Response is voluntary.

The area of land shown on this photo (map) has been selected for this survey.

[Refer respondent photo or map. Provide segment boundaries, houses and other identifying landmarks to help the respondent become familiar with the segment.]

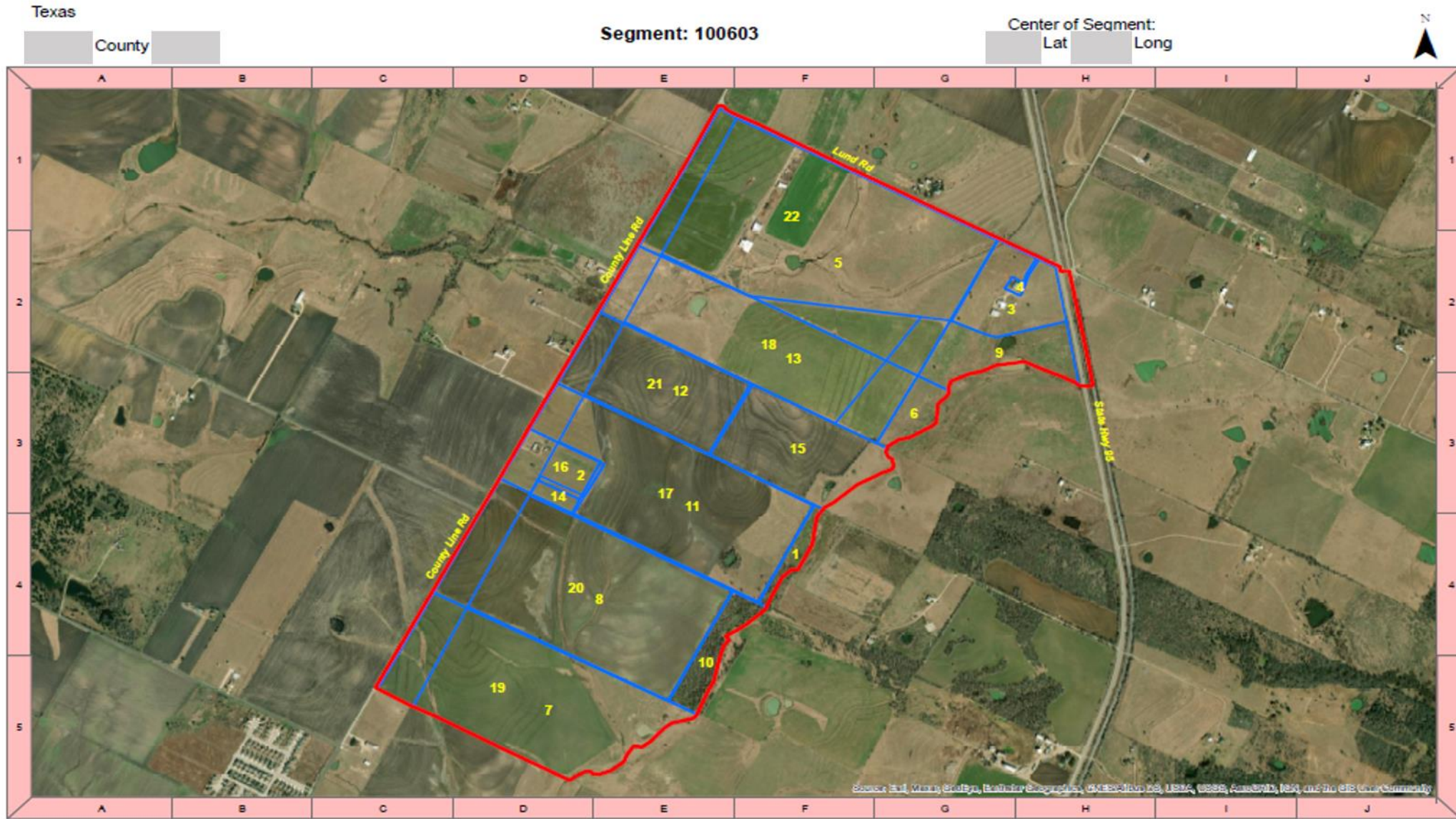


Screening Form



1. On June 1, did you operate land inside these **red** lines?
 - ☐ **Yes** - [Continue with item 2.]
 - ☐ **No** - [Determine who the tract operators are inside the segment. Thank respondent and conclude interview.]
2. What were the boundaries of land operated inside these **red** lines?
[Verify or draw tract boundaries in blue, then continue with item 3.]
3. Was any land inside these **red** lines administered or controlled by a public agency, industrial corporation, or grazing association for use on a fee per head or animal unit month (AUM) basis?
 - ☐ **Yes** - [Correct boundaries and assign a separate tract code to the PIGA land, then go to page 2.]
 - ☐ **No** - [Go to page 2.]

Screening Form



Screening Form

In Column 5, be sure that the letter agrees with the letter you assigned to the tract on the aerial photo.

5	6	7	8	9	10	11
TRACT LETTER	Line 1 – Full Name (First, Middle, Last) Line 2 – Mailing Address Line 3 – City, State, ZIP Code Line 4 – Telephone Number	<i>Is this tract Public, Industrial, or Grazing Association land used on an AUM basis?</i>	On the total acres operated on June 1, have there been or will there be any crops grown, hay cut, livestock, poultry, honey bees or aquaculture raised this year?	On the total acres operated on June 1, have you sold or will you sell agricultural products or receive government payments this year?	On the total acres operated on June 1, are any crops now in storage or will there be any crops stored before June 1, [year]?	Has this operation owned or raised any hogs or pigs in the past 12 months, or does it expect to own or raise any this year?
A	Name: <u>Ag Super Farms - Ima Farmer</u> Address: <u>100 FM 20</u> <u>Agtown, US 54321</u> Phone: <u>(555) 555-5717</u>	<input type="checkbox"/> Yes – Enter acres in col.21 and conclude interview. <input checked="" type="checkbox"/> No	<input checked="" type="checkbox"/> Yes – Go to Questionnaire <input type="checkbox"/> DK – Go to Questionnaire <input type="checkbox"/> No	<input type="checkbox"/> Yes – Go to Questionnaire <input type="checkbox"/> DK – Go to Questionnaire <input type="checkbox"/> No	<input type="checkbox"/> Yes – Go to Questionnaire <input type="checkbox"/> DK – Go to Questionnaire <input type="checkbox"/> No	<input type="checkbox"/> Yes – Go to Questionnaire <input type="checkbox"/> DK – Go to Questionnaire <input type="checkbox"/> No
B	Name: <u>Bill Rancher</u> Address: <u>2 Happy Rd</u> <u>Agtown, US 54321</u> Phone: <u>(555) 555-7444</u>	<input type="checkbox"/> Yes – Enter acres in col.21 and conclude interview. <input checked="" type="checkbox"/> No	<input type="checkbox"/> Yes – Go to Questionnaire <input type="checkbox"/> DK – Go to Questionnaire <input checked="" type="checkbox"/> No	<input type="checkbox"/> Yes – Go to Questionnaire <input type="checkbox"/> DK – Go to Questionnaire <input checked="" type="checkbox"/> No	<input type="checkbox"/> Yes – Go to Questionnaire <input type="checkbox"/> DK – Go to Questionnaire <input checked="" type="checkbox"/> No	<input type="checkbox"/> Yes – Go to Questionnaire <input type="checkbox"/> DK – Go to Questionnaire <input checked="" type="checkbox"/> No



Screening Form



In Column 6, record or verify the full name and complete mailing address and phone number. Include “Non-Ag” in the operation name as needed.

5	6	7	8	9	10	11
TRACT TIRE	Line 1 – Full Name (First, Middle, Last) Line 2 – Mailing Address Line 3 – City, State, ZIP Code Line 4 – Telephone Number	Is this tract Public, Industrial, or Grazing Association land used on an AUM basis?	On the total acres operated on June 1, have there been or will there be any crops grown, hay cut, livestock, poultry, honey bees or aquaculture raised this year?	On the total acres operated on June 1, have you sold or will you sell agricultural products or receive government payments this year?	On the total acres operated on June 1, are any crops now in storage or will there be any crops stored before June 1, [year]?	Has this operation owned or raised any hogs or pigs in the past 12 months, or does it expect to own or raise any this year?
A	Name: Ag Super Farms - Ima Farmer Address: 100 FM 20 Agtown, US 54321 Phone: (555) 555-5717	<input type="checkbox"/> Yes – Enter acres in col.21 and conclude interview. <input checked="" type="checkbox"/> No	<input checked="" type="checkbox"/> Yes – Go to Questionnaire <input type="checkbox"/> DK – Go to Questionnaire <input type="checkbox"/> No	<input type="checkbox"/> Yes – Go to Questionnaire <input type="checkbox"/> DK – Go to Questionnaire <input type="checkbox"/> No	<input type="checkbox"/> Yes – Go to Questionnaire <input type="checkbox"/> DK – Go to Questionnaire <input type="checkbox"/> No	<input type="checkbox"/> Yes – Go to Questionnaire <input type="checkbox"/> DK – Go to Questionnaire <input type="checkbox"/> No
B	Name: Bill Rancher Non-Ag Address: 2 Happy Rd Agtown, US 54321 Phone: (555) 555-7444	<input type="checkbox"/> Yes – Enter acres in col.21 and conclude interview. <input checked="" type="checkbox"/> No	<input type="checkbox"/> Yes – Go to Questionnaire <input checked="" type="checkbox"/> DK – Go to Questionnaire <input checked="" type="checkbox"/> No	<input type="checkbox"/> Yes – Go to Questionnaire <input checked="" type="checkbox"/> DK – Go to Questionnaire <input checked="" type="checkbox"/> No	<input type="checkbox"/> Yes – Go to Questionnaire <input checked="" type="checkbox"/> DK – Go to Questionnaire <input checked="" type="checkbox"/> No	<input type="checkbox"/> Yes – Go to Questionnaire <input checked="" type="checkbox"/> DK – Go to Questionnaire <input checked="" type="checkbox"/> No



Screening Form

Ask questions starting in Column 8. On the first 'Yes' or 'DK', fill out a tract questionnaire. If you get a 'No', keep going.

5	6	7	8	9	10	11
TRACT CEN T R	Line 1 – Full Name (First, Middle, Last) Line 2 – Mailing Address Line 3 – City, State, ZIP Code Line 4 – Telephone Number	<i>Is this tract Public, Industrial, or Grazing Association land used on an AUM basis?</i>	On the total acres operated on June 1, have there been or will there be any crops grown, hay cut, livestock, poultry, honey bees or aquaculture raised this year?	On the total acres operated on June 1, have you sold or will you sell agricultural products or receive government payments this year?	On the total acres operated on June 1, are any crops now in storage or will there be any crops stored before June 1, [year]?	Has this operation owned or raised any hogs or pigs in the past 12 months, or does it expect to own or raise any this year?
	<u>A</u> Name: Ag Super Farms - Ima Farmer Address: 100 FM 20 Agtown, US 54321 Phone: (555) 555-5717	<input type="checkbox"/> Yes – Enter acres in col.21 and conclude interview. <input checked="" type="checkbox"/> No	<input checked="" type="checkbox"/> Yes – Go to Questionnaire <input type="checkbox"/> DK – Go to Questionnaire <input type="checkbox"/> No	<input type="checkbox"/> Yes – Go to Questionnaire <input type="checkbox"/> DK – Go to Questionnaire <input type="checkbox"/> No	<input type="checkbox"/> Yes – Go to Questionnaire <input type="checkbox"/> DK – Go to Questionnaire <input type="checkbox"/> No	<input type="checkbox"/> Yes – Go to Questionnaire <input type="checkbox"/> DK – Go to Questionnaire <input type="checkbox"/> No
	<u>B</u> Name: Bill Rancher Non-Ag Address: 2 Happy Rd Agtown, US 54321 Phone: (555) 555-7444	<input type="checkbox"/> Yes – Enter acres in col.21 and conclude interview. <input checked="" type="checkbox"/> No	<input type="checkbox"/> Yes – Go to Questionnaire <input checked="" type="checkbox"/> No	<input type="checkbox"/> Yes – Go to Questionnaire <input checked="" type="checkbox"/> No	<input type="checkbox"/> Yes – Go to Questionnaire <input checked="" type="checkbox"/> No	<input type="checkbox"/> Yes – Go to Questionnaire <input checked="" type="checkbox"/> No



Screening Form



Column 18:
Record the acres
in the Non-Ag
Tract.

Column 20:
Potential for ag
before next year?

Column 20a:
Code that
corresponds to
type of non-
agricultural land

A

B

13	14	15	16	17	18	20	20a	21
On June 1, were there any horses, ponies, or other equine, regardless of ownership, on the total acres operated?	Excluding home use, have there been or will there be any vegetables, melons, fruit, nuts or berries grown on this operation this year?	Excluding home use, have there been or will there be any nursery, greenhouse, floriculture, sod, cut Christmas trees or other woody crops grown on this operation this year?	On June 1, did this operation have any idle cropland or more than 99 acres of pasture?	OFFICE USE	NON-AGRICULTURAL TRACTS			PIGA
					How many acres are inside these red lines? Enter acres and land use, then continue	Does this tract have potential for agriculture before June 1, [year]? Enter code	What best describes this non-agricultural tract? Enter code	Acres of Public, Industrial, or Grazing Association land used on AUM basis. Enter acres
<input type="checkbox"/> Yes – Go to Questionnaire <input type="checkbox"/> DK – Go to Questionnaire <input type="checkbox"/> No	<input type="checkbox"/> Yes – Go to Questionnaire <input type="checkbox"/> DK – Go to Questionnaire <input type="checkbox"/> No	<input type="checkbox"/> Yes – Go to Questionnaire <input type="checkbox"/> DK – Go to Questionnaire <input type="checkbox"/> No	<input type="checkbox"/> Yes – Go to Questionnaire <input type="checkbox"/> DK – Go to Questionnaire <input type="checkbox"/> No	— — 00	846 . LAND USE	818 <input type="checkbox"/> YES = 1 <input type="checkbox"/> DK = 2 <input type="checkbox"/> NO = 3	783	849
<input type="checkbox"/> Yes – Go to Questionnaire <input type="checkbox"/> DK – Go to Questionnaire <input checked="" type="checkbox"/> No	<input type="checkbox"/> Yes – Go to Questionnaire <input type="checkbox"/> DK – Go to Questionnaire <input checked="" type="checkbox"/> No	<input type="checkbox"/> Yes – Go to Questionnaire <input type="checkbox"/> DK – Go to Questionnaire <input checked="" type="checkbox"/> No	<input type="checkbox"/> Yes – Go to Questionnaire <input type="checkbox"/> DK – Go to Questionnaire <input checked="" type="checkbox"/> No	— — 00	846 2.5 LAND USE <i>Residential</i>	818 3 <input type="checkbox"/> YES = 1 <input type="checkbox"/> DK = 2 <input checked="" type="checkbox"/> NO = 3	783 1	849



Screening Form



Codes to be used in Column 20a are:
(1) Residential
(2) Woods
(3) Idle Open Land
(4) Pasture
(5) Water
(6) Reported Non-Ag by Respondent
(7) Vacant Houses
(8) Obvious Non-Ag
(9) Grassland
(10) Hunting Preserve or Private Land Managed for Wildlife
(11) Government Land
(12) Other

Please include clarifying comments if you choose option 8 or 12, or if there is potential for agriculture in the next 12 months.



Screening Form

Some states ask about PIGA land (Public, Industrial or Grazing Association).
If Column 7 is 'Yes', Enter acres in Column 21

5	6	7	8	9	10	11
TRACT T T E R	Line 1 – Full Name (First, Middle, Last) Line 2 – Mailing Address Line 3 – City, State, ZIP Code Line 4 – Telephone Number	Is this tract Public, Industrial, or Grazing Association land used on an AUM basis?	On the total acres operated on June 1, have here been or will there be any crops grown, hay cut, livestock, poultry, honey bees or aquaculture raised this year?	On the total acres operated on June 1, have you sold or will you sell agricultural products or receive government payments this year?	On the total acres operated on June 1, are any crops now in storage or will there be any crops stored before June 1, [year]?	Has this operation owned or raised any hogs or pigs in the past 12 months, or does it expect to own or raise any this year?
<u>A</u>	Name: Ag Super Farms - Ima Farmer Address: 100 FM 20 Agtown, US 54321 Phone: (555) 555-5717	<input checked="" type="checkbox"/> Yes – Enter acres in col.21 and conclude interview. <input type="checkbox"/> No	<input type="checkbox"/> Yes – Go to Questionnaire <input type="checkbox"/> DK – Go to Questionnaire <input type="checkbox"/> No	<input type="checkbox"/> Yes – Go to Questionnaire <input type="checkbox"/> DK – Go to Questionnaire <input type="checkbox"/> No	<input type="checkbox"/> Yes – Go to Questionnaire <input type="checkbox"/> DK – Go to Questionnaire <input type="checkbox"/> No	<input type="checkbox"/> Yes – Go to Questionnaire <input type="checkbox"/> DK – Go to Questionnaire <input type="checkbox"/> No
<u>B</u>	Name: Bill Rancher Address: 2 Happy Rd Agtown, US 54321 Phone: (555) 555-7444	<input type="checkbox"/> Yes – Enter acres in col.21 and conclude interview. <input checked="" type="checkbox"/> No	<input type="checkbox"/> Yes – Go to Questionnaire <input type="checkbox"/> DK – Go to Questionnaire <input checked="" type="checkbox"/> No	<input type="checkbox"/> Yes – Go to Questionnaire <input type="checkbox"/> DK – Go to Questionnaire <input checked="" type="checkbox"/> No	<input type="checkbox"/> Yes – Go to Questionnaire <input type="checkbox"/> DK – Go to Questionnaire <input checked="" type="checkbox"/> No	<input type="checkbox"/> Yes – Go to Questionnaire <input type="checkbox"/> DK – Go to Questionnaire <input checked="" type="checkbox"/> No



Screening Form



If Column 7 is 'Yes', enter the number of acres in Column 21 and conclude the interview.

13	14	15	16	17	18	20	20a	21
On June 1, were there any horses, ponies, or other equine, regardless of ownership, on the total acres operated?	Excluding home use, have there been or will there be any vegetables, melons, fruit, nuts or berries grown on this operation this year?	Excluding home use, have there been or will there be any nursery, greenhouse, floriculture, sod, cut Christmas trees or other woody crops grown on this operation this year?	On June 1, did this operation have any idle cropland or more than 99 acres of pasture?	OFFICE USE	NON-AGRICULTURAL TRACTS			PIGA
					How many acres are inside these red lines? Enter acres and land use, then continue	Does this tract have potential for agriculture before June 1, [year]? Enter code	What best describes this non-agricultural tract? Enter code	Acres of Public, Industrial, or Grazing Association land used on AUM basis. Enter acres
<input type="checkbox"/> Yes – Go to Questionnaire	<input type="checkbox"/> Yes – Go to Questionnaire	<input type="checkbox"/> Yes – Go to Questionnaire	<input type="checkbox"/> Yes – Go to Questionnaire	00	846 .	818	783	849
<input type="checkbox"/> DK – Go to Questionnaire	<input type="checkbox"/> DK – Go to Questionnaire	<input type="checkbox"/> DK – Go to Questionnaire	<input type="checkbox"/> DK – Go to Questionnaire		LAND USE	<input type="checkbox"/> YES = 1 <input type="checkbox"/> DK = 2 <input type="checkbox"/> NO = 3		250.0
<input type="checkbox"/> No	<input type="checkbox"/> No	<input type="checkbox"/> No	<input type="checkbox"/> No	00	846 2.5	818 3	783 6	849
<input type="checkbox"/> DK – Go to Questionnaire	<input type="checkbox"/> DK – Go to Questionnaire	<input type="checkbox"/> DK – Go to Questionnaire	<input type="checkbox"/> DK – Go to Questionnaire		Op's residence No Ag	<input type="checkbox"/> YES = 1 <input checked="" type="checkbox"/> DK = 2 <input type="checkbox"/> NO = 3		.
<input type="checkbox"/> No	<input type="checkbox"/> No	<input type="checkbox"/> No	<input type="checkbox"/> No					

A

B



Screening Form



- A tract will be an agricultural tract if anywhere on the total acres operated, the operation:
 - Produces or raises an agricultural commodity
 - Stores crops
 - Produces and Sells agricultural products
 - Receives government payments (CRP, WRP, etc.)
 - Owns or Raises livestock
 - Meets another criteria of a farm
- A tract will be a non-ag tract if it meets none of the criteria above.
- When in doubt? Fill it out.



Screening Form



Special Notes About Non-Ag Tracts:

- In the Operation Name, record what the tract is
 - church, woods, roads etc.
- Record a contact name and full street address if possible
 - This is NECESSARY for any Non-Ag Tracts with potential for Ag in the next year.
 - For residential neighborhoods with no ag, one contact name is sufficient to represent a groups of houses IF it follows the ½ acre rule.

Screening Form

Special Notes About Non-Ag Tracts:

- In Column 20, seriously consider “potential for ag”
 - Could a crop be seeded without having to improve or clear the land?
 - Is there a greenhouse or grain storage bin on the property?
 - Is there a fenced pasture, barn, pen, hog building, chicken house, or any other sign of potential for livestock?



Screening Form

Special Notes About Non-Ag Tracts:

- In Column 20, seriously consider “potential for ag”
 - Ask Respondent if they intend to have agriculture in the next year.
 - If no Respondent is available, use your best judgment based on observation.
 - Non-Ag Tracts coded to have a potential for agriculture WILL be sampled for all follow-on surveys.





Screening Form



Other Potential Screening Problems:

- Federal Public Land (Forest Service)
- Non-Federal Public Land
- Industrial Land
- Institutional Farms
- Ag Business
- Equine Operations
- Land used “rent free” by someone other than the tract operator
- Out-of-state operations
- Operator with land in more than one segment
- Landlord rents out cropland, but keeps control of other facilities
- Two or more renters of the same parcel
- (Consult Chapter 5 of the Interviewer Manual for more information)



Screening Form



Other Potential Screening Problems:

- Two or more aerial photos for a segment
- Boundaries of segment not identifiable
- Boundaries of segment on aerial photo and county map do not agree
- Aerial photos not provided for a segment
- Segment boundaries extend into a neighboring state/county
- Segment boundary cuts through a field
- More than 20 ag tracts in one segment
- Incorrect Digitized Acres



Screening Form – Back Page



[Complete these items when enumeration of segment is completed.]

1. Total tract letters listed in **Column 5, page 2 (sum of all Screening Forms for this segment)**.....

7
2. Number of **tract letters** listed **on photo** or map.....

7

(Item 1 must equal item 2.)

3. Number of **Area Version** questionnaires completed.....

4
4. Number of tracts with acreage listed in **Column 18, page 3**.....

+

3
5. Number of tracts with acreage listed in **Column 21, page 3**.....

+

0
6. Total of items 3 + 4 + 5.....

=

5326 7

(Item 6 must equal items 1 and 2.)



Screening Form – Back Page

Worksheet

Ag Tract Acres		Non-Ag Tract Acres		PIGA Tract Acres
A=302.0	E=52.0	B=5.0		
C=141.0		G=2.5		
D=100.5	595.5	H=6.1	13.6	0

$$609.1/600 \times 100 = \mathbf{101.5\%}$$

ENUMERATOR: _____

DATE: _____

Reported Acres (RA)	OFFICE USE Digitized Acres	RA / DA
609.1	600	101.5%



[Comment on any enumerating problems caused by segment boundaries, split fields, aerial photo coverage, etc.]

- Please add comments if you encounter something noteworthy such as problems with enumeration
- Write the number of hours required to complete a segment containing a large number of Ag tracts



Reminders

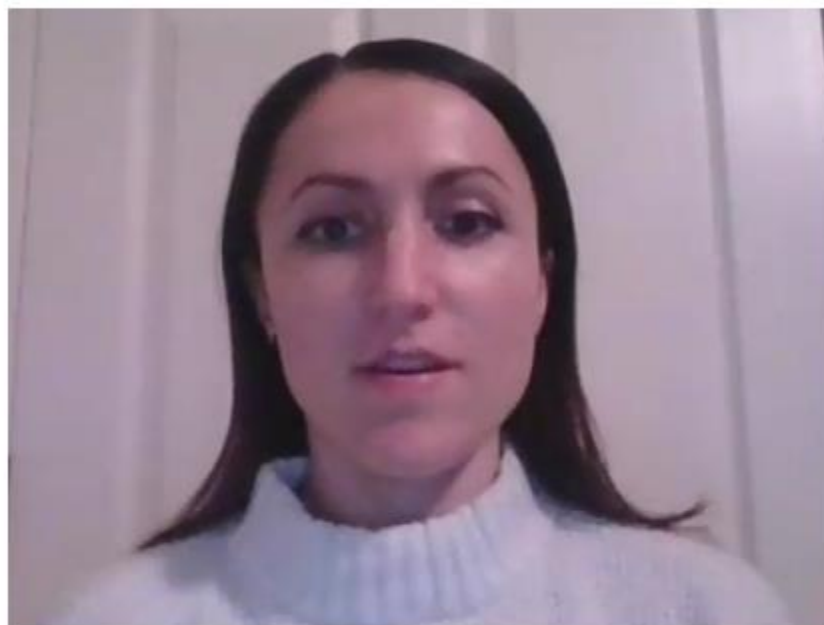


- Account for all land inside segment boundaries
- Get complete and accurate names and addresses of tract operators for Ag, Non-Ag, and PIGA Tracts
- Verify the number of tracts and acreages on the back page of the Screening Form
- Leave good comments
- Verify all numbers and tracts balance out

Thank you!

Face page, Sections A and C

[Click Here to
return to
List of Topics](#)



Bedriena Uka
Heartland Region



United States Department of Agriculture
National Agricultural Statistics Service



Face Page – Tract Label



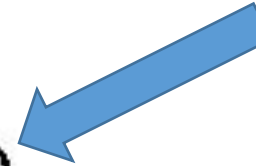
42 000170999 07 00 002761 0000197423 0
SEQ042-00596

42 2062 170999 07
STR

42100199990

TRACT G
ACRE 35.5
OPDOM 00 80 133
(717) 999-9998 C

Previously
Reported Acres



(717) 999-9999
CLICHÉ FARM NAME
PAUL L SMITH
~~23 RURAL DR~~
PITTS GROVE NJ 08318-

32 RURAL DR

LID 42 917995500

***These are fake addresses**



United States Department of Agriculture
National Agricultural Statistics Service



Face Page - Verification

1. I need to make sure we have your (the operator's) correct name, mailing address and phone number.

☐ [VERIFY LABEL IF PRESENT]

Name of
Farm, Ranch,
or Operation: _____

Name of Operator: _____
(First) (Middle) (Last)

Mailing Address: _____
(Route or Street)

(City) (State) (ZIP Code)



Face Page – Wrong Target

DELETE TRACT



42 000170999 07 00 002761 000019742:
SEQ042-00596

42 2062 140999 07
STR 42100199990

(717) 999-9999
CLICHÉ FARM NAME

~~PAUL L SMITH~~

23 RURAL DR
PITTS GROVE NJ 08318-

Wrong Target?

Screener Question

1. On June 1, did you operate land inside these red lines?

☐ Yes

☒ No

Status

Status - Pending

No Longer in
Segment



United States Department of Agriculture
National Agricultural Statistics Service



Section A – Question 1

SECTION A - OPERATION DESCRIPTION

1. On June 1, were the day-to-day decisions for this tract of land made by an individual operator, by partners, or by a hired manager? [Check one]

- | | |
|--|---|
| <input type="checkbox"/> Individual | - [Enter 1] |
| <input type="checkbox"/> Partners | - [Enter number of partners, including operator.] |
| <input type="checkbox"/> A hired manager | - [Enter 8] |

Code

9921

[If code is 1 or 8, go to Item 4.]

[Landlord - tenant arrangements are not considered partnerships. If tract is operated by partners, continue.]



Section A (continued)

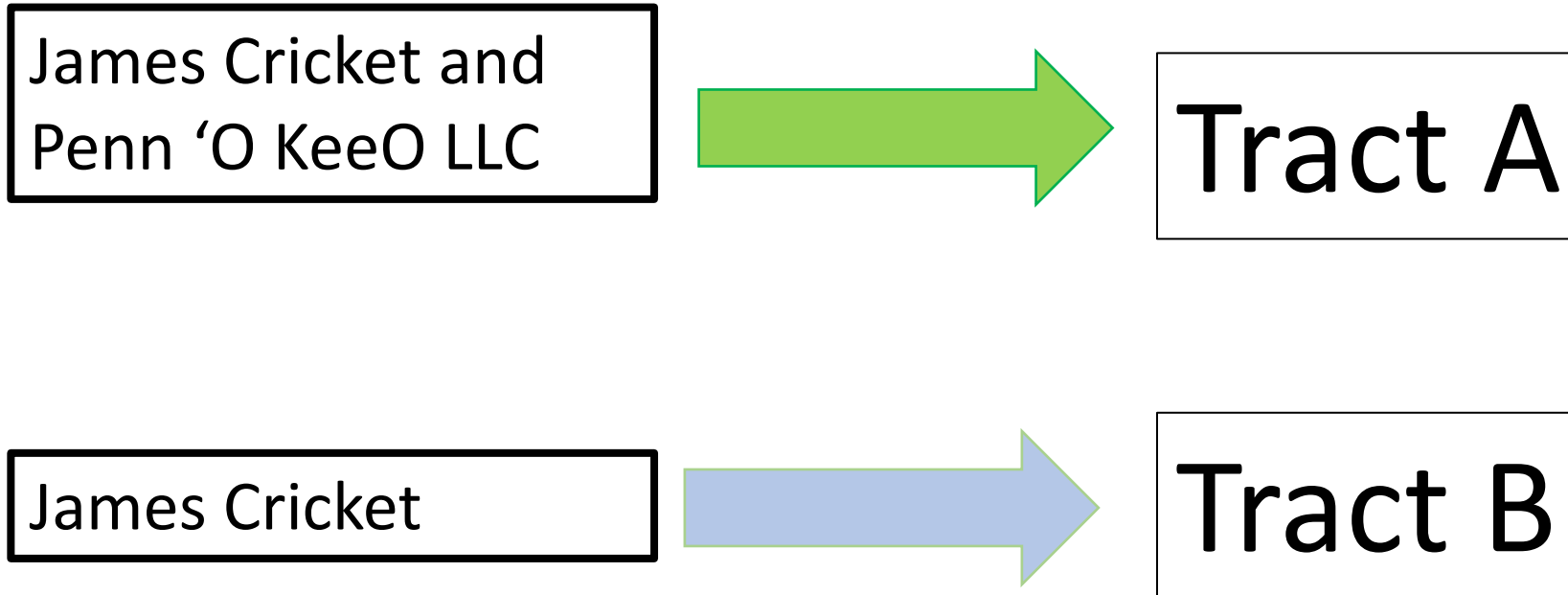
More Than One Operating Arrangement?

If target states having multiple operating arrangements within the segment:

- Assign additional tract letter.
- Determine whether it qualifies for a tract questionnaire
- If qualifying, complete a tract questionnaire for it.



Operating Arrangement Example



Section A - Partners

FOR PARTNERS:

- Do they share equally in decisions?
- List out the names and contact information of each.
- CAPI will mimic this...

2. Do the partners share equally in day-to-day decisions?

☐ Yes - (Consider the oldest partner the operator.)

☐ No - (The partner who makes most of the day-to-day decisions is the operator.)

[Operator shown on Face Page must be the partner making the most day-to-day decisions, or the oldest partner. Make corrections if necessary.]

3. Now I need to identify by name, mailing address and phone number for the other partner(s) in this operation.
[Verify partners' names and make necessary corrections if names have already been entered.]

Name _____				
(First)		(Middle)		(Last)
Mailing Address _____				
(Route or Street)				
_____ () _____				
(City)	(State)	(ZIP Code)	(Phone)	check if cell phone <input type="checkbox"/>

OFFICE USE	
STATE	POID
9973	9972
_____	_____ - _____ - _____

Name _____				
(First)		(Middle)		(Last)
Mailing Address _____				
(Route or Street)				
_____ () _____				

OFFICE USE	
STATE	POID
_____	_____



Section A – Partnership Exclusions

THESE ARE NOT PARTNERS

Family members (including spouse) **should not be listed** if they do not participate in the **day-to-day decisions** of the operation.

Landlord-tenant, cash rent, share cropping and managed land **should be excluded**.

2. Do the partners share equally in day-to-day decisions?

☐ Yes - (Consider the oldest partner the operator.)

☐ No - (The partner who makes most of the day-to-day decisions is the operator.)

[Operator shown on Face Page must be the partner making the most day-to-day decisions, or the oldest partner. Make corrections if necessary.]

3. Now I need to identify by name, mailing address and phone number for the other partner(s) in this operation.
[Verify partners' names and make necessary corrections if names have already been entered.]

Name _____				
(First)	(Middle)	(Last)		
Mailing Address _____				
(Route or Street)				
_____ () _____				
(City)	(State)	(ZIP Code)	(Phone)	check if cell phone <input type="checkbox"/>

OFFICE USE	
STATE	POID
9973	9972
_____	_____ - _____ - _____

Name _____				
(First)	(Middle)	(Last)		
Mailing Address _____				
(Route or Street)				
_____ () _____				

OFFICE USE	
STATE	POID
_____	_____



United States Department of Agriculture
National Agricultural Statistics Service



Section C – First Questions

SECTION C - SECTIONS TO BE COMPLETED

1. [Are BOTH CROPS - STOCKS and CATTLE boxes at bottom of page checked?]
☐ Yes - [Go to Section D.]
☐ No
2. [Is this a new segment or previously unknown tract operator?]
☐ Yes - [Check CROPS - STOCKS and CATTLE boxes at bottom of page, then go to Section D.]
☐ No
3. [Was this tract nonagricultural last year?]
☐ Yes - [Check CROPS - STOCKS and CATTLE boxes at bottom of page, then go to Section D.]
☐ No



Section C – Questions 4 & 5

ANY changes to the face page or changes to the names of the partners recorded in Section A will require the boxes to be checked.

4. [Have you changed or corrected the operation name, operator's name, or address on Face Page?]

☐ Yes - [Check CROPS - STOCKS and CATTLE boxes at bottom of page, then go to Section D.]

☐ No

5. [Have you changed, corrected, or deleted any partners' names or addresses in Section A, page 2?]

☐ Yes - [Check CROPS - STOCKS and CATTLE boxes at bottom of page, then go to Section D.]

☐ No - [Go to Section D.]



Section C – Are Boxes Checked?

Crops - Stocks and Cattle boxes

Some of these will be checked



CROPS - STOCKS
✓

CATTLE
✓



Section C – Are Boxes Checked?

ULTIMATELY, YOU END UP ON SECTION D EITHER WAY.

- All 5 questions may be “No” and it would finally tell you to [Go to Section D].
- Answer all questions until you check one that says go to Section D.

SECTION C - SECTIONS TO BE COMPLETED

1. [Are BOTH CROPS - STOCKS and CATTLE boxes at bottom of page checked?]

☐ Yes - [Go to Section D.]

☐ No

2. [Is this a new segment or previously unknown tract operator?]

☐ Yes - [Check CROPS - STOCKS and CATTLE boxes at bottom of page, then go to Section D.]

☐ No

3. [Was this tract nonagricultural last year?]

☐ Yes - [Check CROPS - STOCKS and CATTLE boxes at bottom of page, then go to Section D.]

☐ No

4. [Have you changed or corrected the operation name, operator's name, or address on Face Page?]

☐ Yes - [Check CROPS - STOCKS and CATTLE boxes at bottom of page, then go to Section D.]

☐ No

5. [Have you changed, corrected, or deleted any partners' names or addresses in Section A, page 2?]

☐ Yes - [Check CROPS - STOCKS and CATTLE boxes at bottom of page, then go to Section D.]

☐ No - [Go to Section D.]

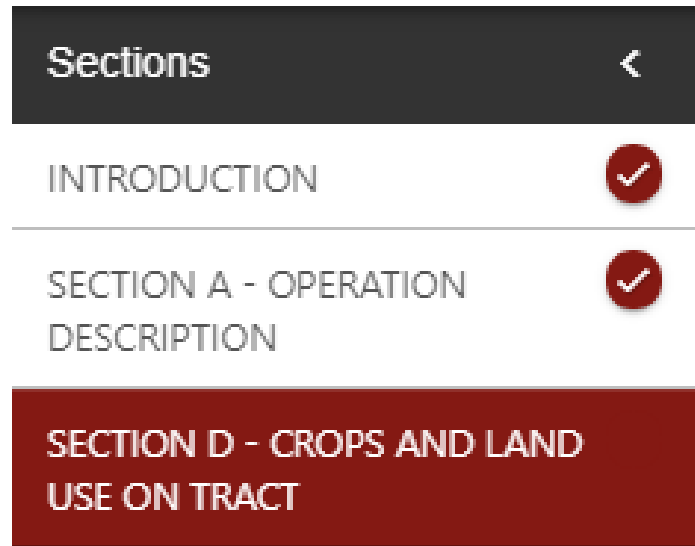


United States Department of Agriculture
National Agricultural Statistics Service



Section C – CAPI

Section C is Invisible in CAPI



– It's all behind the scenes...



Final Reminders

- Follow the enumerator instructions very carefully.
- Must do a questionnaire for each tract operator who qualifies as a possible farm operator.
- Section C is essential as it determines if additional questions for the entire operation are required.
- Leave comments
- Enter everything into CAPI



Thank you!



United States Department of Agriculture
National Agricultural Statistics Service





[Click Here to
return to
List of Topics](#)



Section D - What's it for?

- Section D collects detailed information on ALL ACREAGE inside the **BLUE TRACT** boundaries!
 - Not just tillable or cropland acres.
 - Be sure to account for all of the cropland, woods, farmsteads, pasture and waste.
- Extra time reviewing the parcel maps with the respondent while screening for agriculture means a more accurate job interviewing and less time spent completing the questionnaire.



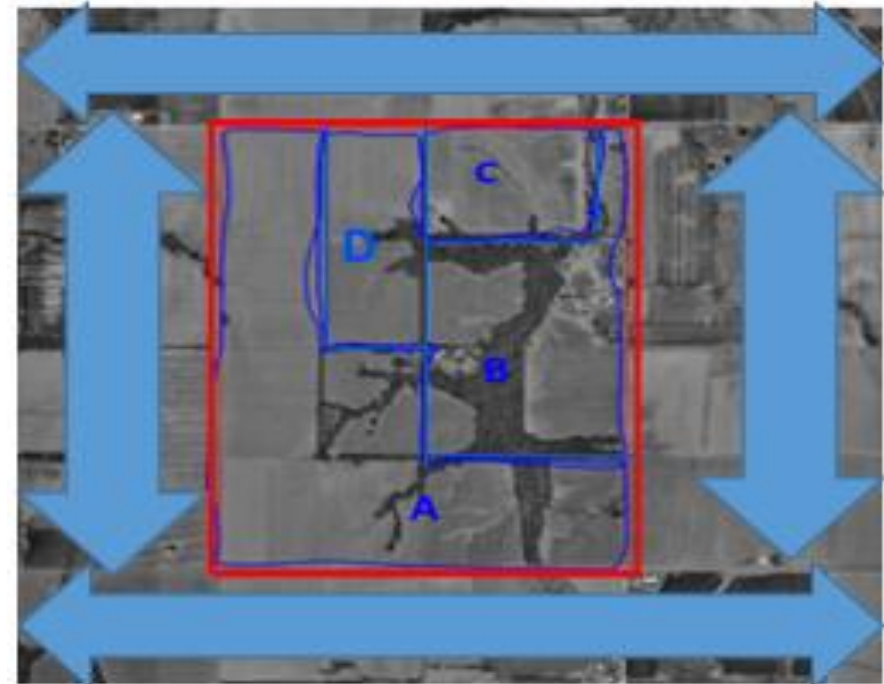
Section D – Crops and Land use on Tract

1. The map and photo has a red boundary drawn on it. How many acres did you operate inside that red boundary on June 1?

Acres
840
.

The next questions will ask about the land use for the acres that you operate inside the red boundary on June 1. **Do not include land you operate that is OUTSIDE the red boundary.**

It is very important that you do not include any acres beyond the red boundaries of the segment. This is critical for this section! Confirm with tract operator once more before you conclude the survey interview.





Section D – Format Change



SECTION D - CROPS AND LAND USE ON TRACT

1. The map and photo has a red boundary drawn on it. How many acres did you operate inside that red boundary on June 1?

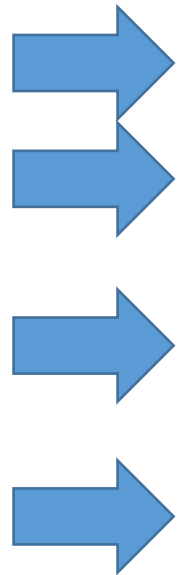
Acres
840
.

The next questions will ask about the land use for the acres that you operate inside the red boundary on June 1. Do not include land you operate that is OUTSIDE the red boundary.

Land Use		Acres
2.	Occupied farmstead or dwelling	843 .
3.	Waste, unoccupied dwellings, buildings and structures, roads, ditches, etc.	841 .
4.	Woodland	831 .
	Pastured	832 .
5.	Pasture	842 .
	Cropland (used only for pasture)	856 .
6.	Land in summer fallow	847 .
7.	Idle cropland - idle all during 2021	857 .

No longer need
field level data!!

Section D - Land Use



Land Use		Acres
2.	Occupied farmstead or dwelling	843 .
3.	Waste, unoccupied dwellings, buildings and structures, roads, ditches, etc.	841 .
4.	Woodland	831 .
		832 .
5.	Pasture	842 .
		856 .

- Line 5 – Pasture
 - Permanent/Cropland (in crop rotation?)
 - ***Dashed line...cropland divider***

Idle Land

6. Land in summer fallow	847	.
7. Idle cropland - idle all during (year) CRP goes here	857	.

- What are you recording here?



Section D - Grains

- Line numbers and crops will vary by state...the pattern
 - Planted and to be planted for all purposes
 - Left to be Planted
 - Harvested for GRAIN or seed
 - Other uses of the grain
- Include small grain acres planted last fall or this spring even if crop was abandoned
- If its DRY GRAIN HAY, goes in “Small Grain Hay”.
 - Line will differ based on state version.



NON-grain Crops

- Line numbers and crops will vary by state
 - Soybeans – double cropped acres line
 - Cotton- Upland and American Pima
 - Potatoes...Reds/Whites/Yellow/Russet
 - Sunflower- For Oil and Non-Oil Varieties
 - Dry Edible Beans
 - Dry Edible Peas (Not green peas)
 - Hay: Alfalfa, Small Grain Hay, Other Hay





Other Crops

... Other crops	Acres planted and to be planted or in use	848
-----------------	---	-----

ENUMERATOR INSTRUCTIONS: If needed, use the workspace below to record other crops and acres. Record acres planted and to be planted or acres in use, including from crops planted in previous years.

OTHER CROPS		ACRES
Other crop 1		.
Other crop 2		.
Other crop 3		.
Other crop 4		.
Other crop(s)		.
	Include total in item code 848 box (Other Crops)	.

- Be specific...
 - Grass silage; haylage; fruit crops like apples; green peas; grapes; hazelnuts, almonds, vegetable crops like carrots, lettuce, tomatoes, grass seed, hops, Christmas trees, etc.
 - Can list more than one, but account for all “Other crop” acres in item code 848 box.

Review & Add



- Make sure all the land in the tract is accounted for in Section D
- Add crop acreage should = Line 1 item code 840 Box, verify with operator
 - Minus double crop acres.

SECTION D - CROPS AND LAND USE ON TRACT

1. The map and photo has a red boundary drawn on it. How many acres did you operate inside that red boundary on June 1?

The next questions will ask about the land use for the acres that you operate inside the red boundary on June 1. Do not include land you operate that is OUTSIDE the red boundary.

16

Acres
840

Land Use	Acres
----------	-------

Review & Add



- CROPLAND acres IrrigatABLE – Only select states ask this question
 - Facilities and equipment
- Double Cropped acres (Line number varies by state)
 - Specifically two crops harvested from the same field during same crop year.
- Office use code 7793
 - Will be completed by you the enumerator, since data will be submitted in CAPI.

27. Enumerator Action - Was Section D Reported by the Respondent or Observed?

		Code
7793	1 <input type="checkbox"/>	Reported
	2 <input type="checkbox"/>	Ref/Inacc Observed



SECTION D IMPORTANT NOTES



- Section D must be completed for every Ag Tract Questionnaire!!!
- For Refusals and Inaccessibles you will still need to draw the tracts boundaries on the aerial photo and complete Section D to the best of your ability.
 - Use your grid to determine tract acreages.
 - Use all other resource materials offered to you.
 - What did you observe when you drove around the segment?

Example of an Area Tract



- TRACT: An area of land inside a segment under one type of land arrangement
- Outlined in blue
- Identify tract with a letter
- Link land with a name

Let's look at a few tracts

- You have drawn off the **tract boundaries** for Tracts A, B, C and D in the Segment.
- You have completed Section D in the questionnaire for each of these tracts.
- Let's review now...



SECTION D - CROPS AND LAND USE ON TRACT

16

1. The map and photo has a red boundary drawn on it. How many acres did you operate inside that red boundary on June 1?

Acres
840
60.0

12. **Oats** (INCLUDE cover crop)

Acres planted and to be planted for all purposes

533

30.0

Acres left to be planted for all purposes

737

.

Acres harvested and to be harvested for grain or seed

534

.

Other uses of oats planted
(Abandoned, silage, green chop, etc)

796

30.0

13. **Corn** (EXCLUDE popcorn and sweet corn)

Acres planted and to be planted for all purposes

530

30.0

Acres left to be planted for all purposes

611

.

Acres to be harvested for grain or seed

531

.

Other uses of corn planted
(Abandoned, silage, green chop, etc)

789

30.0

23. **Hay**

Acres cut and to be cut for dry hay.

Alfalfa and Alfalfa Mixtures

653

.

Small Grain Hay (EXCLUDE Straw.)

656

30.0

Other Hay

342

.



TRACT A (continued)

SECTION D - CROPS AND LAND USE ON TRACT

31

1. The map and photo has a red boundary drawn on it. How many acres did you operate inside that red boundary on June 1?

Acres
840
60 . 0

SECTION D - CROPS AND LAND USE ON TRACT (continued)

Acres

22. How many of the cropland acres inside the red boundary have facilities and equipment available for irrigation? (include land that may not be irrigated this year.).....

803
60 . 0

Acres

23. How many acres inside the red boundary were or will be planted to two different crops (including any soybeans reported in item code 602 box) or will have two uses of the same crop in the current crop year?

1844
.



TRACT B

SECTION D - CROPS AND LAND USE ON TRACT

		Acres
1. The map and photo has a red boundary drawn on it. How many acres did you operate inside that red boundary on June 1?	840	40.0

10. Spring Wheat Other than Durum (INCLUDE cover crop)	Acres planted and to be planted for all purposes	550	40.0
	Acres left to be planted for all purposes	613	.
	Acres harvested and to be harvested for grain or seed	768	30.0
	Other uses of spring wheat planted (Abandoned, silage, green chop, etc)	921	10.0



TRACT C



SECTION D - CROPS AND LAND USE ON TRACT

1. The map and photo has a red boundary drawn on it. How many acres did you operate inside that red boundary on June 1?

Acres	
840	28.0

The next questions will ask about the land use for the acres that you operate inside the red boundary on June 1. Do not include land you operate that is OUTSIDE the red boundary.

Land Use		Acres	
2.	Occupied farmstead or dwelling	843	3.0
3.	Waste, unoccupied dwellings, buildings and structures, roads, ditches, etc.	841	.
4.	Woodland	831	14.5
	----- Pastured	832	.
5.	Pasture	842	10.5
	----- Cropland (used only for pasture)	856	.
6.	Land in summer fallow	847	.
7.	Idle cropland - idle all during (year)	857	.



TRACT D



1. The map and photo has a red boundary drawn on it. How many acres did you operate inside that red boundary on June 1?	Acres
	840 30 . 0

24. Other crops	Acres planted and to be planted or in use	848 30 . 0
ENUMERATOR INSTRUCTIONS: If needed, use the workspace below to record other crops and acres. Record acres planted and to be planted or acres in use, including from crops planted in previous years.		
OTHER CROPS		ACRES
Other crop 1 Apples		10 . 0
Other crop 2 Cherries		10 . 0
Other crop 3 Hazelnuts		10 . 0
Other crop 4		.
Other crop(s)		.
Include total in item code 848 box (Other Crops)		30 . 0

SECTION D - CROPS AND LAND USE ON TRACT (continued)

25. How many of the cropland acres inside the red boundary have facilities and equipment available for irrigation? (include land that may not be irrigated this year.).....	Acres
	803 30 . 0



This Concludes Section D





[Click Here to
return to
List of Topics](#)

Sections E and F



Katie Kallenbach
Upper Midwest Regional Office

Section E

Total Acres Operated and Land Use



Section E

Purpose

- Determine total land in the operation
- Provide data for state level estimates of Land in Farms and Number of Farms
- For select operations, specific crop acres and intentions are used to select samples for future surveys.





Section E: Items 1-3

Total Acres Operated



1. Now I would like to ask about the **total acres operated** under this land arrangement. Include the farmstead, all cropland, woodland, pastureland, wasteland, and government program land.

2. On June 1, how many acres did this operation:

		Acres		
a. Own?.....	+	<table border="1"><tr><td>901</td><td>.</td></tr></table>	901	.
901	.			
b. Rent or Lease from Others, or use Rent Free? (Exclude Federal, State and other types of land rented or leased on an AUM basis, BLM and Forest Service.).....	+	<table border="1"><tr><td>902</td><td>.</td></tr></table>	902	.
902	.			
c. Rent or Lease to Others?.....	-	<table border="1"><tr><td>905</td><td>.</td></tr></table>	905	.
905	.			
3. [Calculate item 2a + 2b - 2c] Then the total acres operated on June 1 was.....	=	<table border="1"><tr><td>900</td><td>.</td></tr></table>	900	.
900	.			

a. Does this include the farmstead, all cropland, woodland, pastureland, wasteland, and government program land?

☐ Yes - [Continue.]

☐ No - [Make corrections, then continue.]



Section E: Items 4-5

Livestock Grazing



4. On June 1, (Year), did this operation pay on a per-head or animal unit month (AUM) basis for livestock to graze on any land (private, Federal, State, Indian Reservation, etc.)?

☐ Yes - [Enter code 1 and continue.] ☐ No - [Enter code 3, then go to item 6.].....

Code

906

5. How many acres did this operation use on a fee-per-head or animal unit month (AUM) basis? (INCLUDE private, Federal, State, railroad, Public School District or Indian Reservation land.).....

Acres

904

- Acres in Item 5 are not reported in total acres operated (Item 3).
- Examples of completing Section E for PIGA operations are found in the Chapter 6 of the Interviewer's Manual.



Section E: Item 6

Acre Verification



- Compare total acres operated (Item 3, Box 900) with the total tract acres reported in Section D (Box 840).
- If reported total acres < tract acres
 - Tract acres include land not in the operation
 - Incorrect total acres operated
- If reported total acres = tract acres
 - Verify reported tract and total acres
 - Make sure to include the operator's residence
- If reported total acres > tract acres
 - Continue to Item 7



Section E: Item 7

Cropland



	Acres
7. Of the total acres operated, how many acres are considered cropland, including land in hay, summer fallow, idle cropland, cropland used for pasture and cropland in government programs? (Including land in the Conservation Reserve Program (CRP) and in the Wetland Reserve Program (WRP)).....	802

- Cropland acres must be greater than or equal to the sum of crops reported in Section D.
- Cropland acres cannot equal total farm acres. Need to account for operator's residence.
- Difference between total land and cropland must account for reported non-tillable acres in Section D (Waste, Woods, Pasture, etc.)



Section E: Item 8

CRP/WRP



8. Of the total acres operated, how many acres are in the Conservation Reserve Program (CRP) or in the Wetland Reserve Program (WRP)?.....

911

.

- CRP/WRP is considered cropland. If CRP/WRP is reported, those acres must be included in total cropland.

Section E: Item 9

Crops - Stocks Skip



9. [Is the CROPS - STOCKS BOX checked on Page x?]

☐ Yes - [Continue.]
 ☐ No - [Go to Section G - Hogs and Pigs.]



- Refer back to the CROPS – STOCKS box in Section C.
- If the box is checked, check yes and continue with the questionnaire.
- If the box is not checked, check no and skip to Section G – Hogs and Pigs.

CROPS - STOCKS
✓

CROPS - STOCKS



Section E: Item 10

Fruit, Berry, Nut or Christmas Trees

10. On the total acres operated, are there any fruit trees, grape vines, tree nuts, berries (excluding strawberries), or Christmas trees?

☐ Yes - [Continue and ask 10a.] ☐ No - [Go to item 11.]

10 a. How many acres are in these crops?.....

Acres
689 .

- Exclude home use

Section E: Item 11

Small Grain Acres

11. [Were Wheat, Oats, Barley, or Rye reported in Section D, Tract Acres?]

☐ Yes - [Enter 1 in Code Box 161, then go to item 12.] **The states that don't ask item 12 → Go to Section F**

☐ No - 11a. On the total acres operated, was any wheat, oats, barley, or rye planted or will any be planted for any purpose for the crop year?

☐ Yes = 1

☐ Don't Know = 2

☐ No = 3.....

Code

161





Section E: Item 12

Crops on Total Acres Operated

Some states don't ask item 12

- Alfalfa seedings during the crop year on the total acres operated

12. On the total acres operated, how many acres of new alfalfa or alfalfa mixtures have been or will be seeded during (Year)? (INCLUDE mixed with a nurse crop, other forage, or direct seedings.).....

Acres Seeded and to be Seeded
528
.

- Acres reported in Item 12 should be greater than or equal to the acres reported in Section D.

Section F

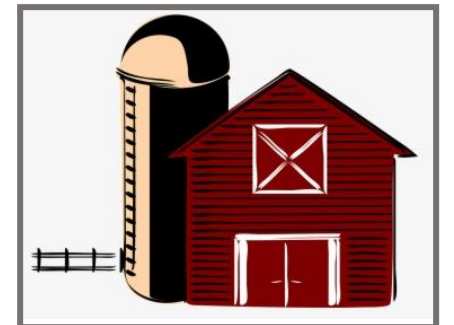
Grains and Oilseeds in Storage on Entire Operation



Section F

Purpose

- Data is used to prepare estimates of the quantity of grains and oilseeds stored on farm.
- Published in the *Grain Stocks* report released at the end of June.
- This section will only be completed if the Crops - Stocks box is checked.





Section F: Item 1

Storage Capacity



- Report the storage capacity of all structures normally used to store whole grains or oilseeds on the total acres operated as of June 1.
- Include:
 - Permanent structures normally used to store whole grains & oilseeds
 - Structures currently in use or will likely be used in the future
- Exclude:
 - Bags, wagons, or ground piles in storage capacity
 - Licensed on farm storage facilities
 - Storage rented to others

1. On June 1, what was the Storage Capacity of all structures normally used to store Whole Grains or Oilseeds on the total acres operated?..... bushels	<table border="1"><thead><tr><th>Capacity</th></tr></thead><tbody><tr><td>808</td></tr></tbody></table>	Capacity	808
Capacity			
808			



Section F: Item 2

Crops Stored on June 1

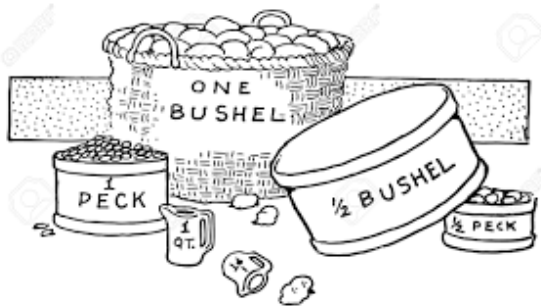


- Include grains and oilseeds for any purpose – seed, feed, sale...
- Must be whole, unprocessed grains & oilseeds – do not include flour, cracked corn, processed grains, or mixed grains
- Include crops stored on the operation including structures rented from others and grains and oilseeds in temporary storage
- Do not include grains or oilseeds stored in structures rented to someone else or stored off the acres operated

Section F: Item 2

Crops Stored on June 1

- Crops asked vary by state
- Each crop will have a check box for whether the crop was stored and a box for reporting how much was stored.





Section F: Item 3

New Crops Stored?



- Item 3 verifies that the stocks reported on hand in Item 2 do not include anything from the current year harvest.
 - If Yes, Item 2 does include new crops, remove all the current year stocks and then continue with the questionnaire.
 - If No, continue with the questionnaire.

3. Were any of the stocks on hand reported in item 2 (above) new crop from the current year harvest?

☐ Yes - [Correct Item 2 to EXCLUDE all current year crop stocks, then continue.]

☐ No - [Continue.]



Section F: Item 4

Rice Stocks



- Only on select state's questionnaires.

4. Was any rice on hand or stored on the total acres operated on June 1?

☐ Yes - Continue.

☐ No - Go to Section G - Hogs and Pigs.

Please report rice on hand by length of grain on a dry weight basis.

No Yes

a. Long Grain varieties such as Lemont, New bonnet and Jackson?..

☐☐

How many bushels?

113

b. Medium Grain varieties such as Mars and Bengal?.....

☐☐

How many bushels?

114

c. Short Grain? Please list variety:_____

☐☐

How many bushels?

115

Amount on Hand
June 1 Last Year
and Earlier Crop
Years

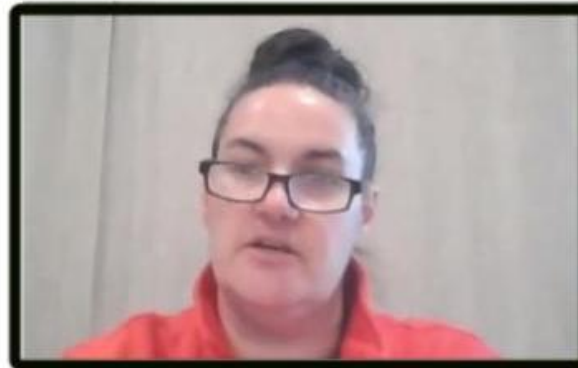
Thank You!



[Click Here to
return to
List of Topics](#)

Section G

Hogs and Pigs



Teresa Green

Group Leader, Upper Midwest Region



Section G

Hogs and Pigs



1. On June 1, did this operation own or raise any hogs or pigs, regardless of location?
(Including hogs or pigs being raised under contract for you by someone else.)

☐ Yes - [Go to item 2.]

☐ No - 1a.

Will anyone raise hogs or pigs on this operation at
any time between now and December 1, 20XX?

☐ Yes = 1

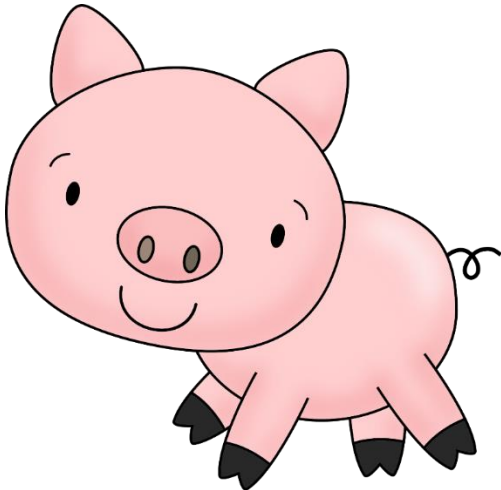
☐ Don't Know = 2

☐ No = 3

Enter code, then
go to Section H.

Code

492





Section G

Hogs and Pigs



Hogs on the Total Acres Operated

2. On June 1, how many hogs and pigs were on the total acres operated?
(Include sows, gilts, boars, market hogs, unweaned pigs and hogs no longer used for breeding.).....

Head

324

[If no hogs are on the total acres operated, go to item 4.]

3. Are any of the (item 2) hogs or pigs owned by someone else?

Head

☐ Yes - 3a. How many hogs and pigs owned by someone else
were on this operation on June 1?.....

322

3b. Who owns the hogs and pigs?.....

3c. Is this hog owner a contractor?

☐ Yes

☐ No

☐ No - [Continue.]

(Owner Name, Address, & Phone Number)

Name _____

Address _____

City, St., Zip _____

Phone _____

OFFICE USE
STATE FIPS

6326

OFFICE USE
POID

327



Section G

Hogs and Pigs



Hogs Owned by this Operation

4. On June 1, how many hogs and pigs did this operation own regardless of location?
(Include hogs or pigs being raised under contract for you by someone else.).....

Head

300

[If no hogs owned, go to Section H.]

5. Are any of these (item 4) hogs located on someone else's land or hog facility?

☐ Yes - 5a. On whose land or hog facility
are these hogs located?.....

Name_____

Address_____

City, St., Zip_____

Phone_____

☐ No - [Continue.]

6. Have you raised hogs or pigs under any other business name during the last 12 months?

☐ Yes - 6a. What is the other name?.....

Name_____

Address_____

City, St., Zip_____

Phone_____

☐ No - [Continue.]

OFFICE USE

326

Section G

Types of Hog Operations

- Independent
 - Includes operations that raise hogs for 4H or home use, have pet pigs or show pigs
- Contractor
- Contractee





Types of Hog Operations

Independent



- The operator owns and raises the hogs
- The operator makes all decisions on raising and marketing the hogs



Independent Operation



1. On June 1, did this operation own or raise any hogs or pigs, regardless of location?
(Including hogs or pigs being raised under contract for you by someone else.)

☒ Yes - [Go to item 2.] ☐ No - 1a. Will anyone raise hogs or pigs on this operation at any time between now and December 1, 20XX?

- ☐ Yes = 1
☐ Don't Know = 2
☐ No = 3

Enter code, then
go to Section H.

Code

492

Hogs on the Total Acres Operated

2. On June 1, how many hogs and pigs were on the total acres operated?
(Include sows, gilts, boars, market hogs, unweaned pigs and hogs no longer used for breeding.).....

Head

324

100

[If no hogs are on the total acres operated, go to item 4.]

3. Are any of the (item 2) hogs or pigs owned by someone else?

☐ Yes - 3a. How many hogs and pigs owned by someone else
were on this operation on June 1?.....

Head

322

3b. Who owns the hogs and pigs?.....

3c. Is this hog owner a contractor?

- ☐ Yes
☐ No

(Owner Name, Address, & Phone Number)

Name _____

Address _____

City, St., Zip _____

Phone _____

☒ No - [Continue.]

OFFICE USE
STATE FIPS

6326

OFFICE USE
POID

327



Independent Operation



Hogs Owned by this Operation

4. On June 1, how many hogs and pigs did this operation own regardless of location?

(Include hogs or pigs being raised under contract for you by someone else.).....

Head

300

100

[If no hogs owned, go to Section H.]

5. Are any of these (item 4) hogs located on someone else's land or hog facility?

☐ Yes - 5a. On whose land or hog facility
are these hogs located?.....

Name_____

Address_____

City, St., Zip_____

Phone_____

☒ No - [Continue.]

6. Have you raised hogs or pigs under any other business name during the last 12 months?

☐ Yes - 6a. What is the other name?.....

Name_____

Address_____

City, St., Zip_____

Phone_____

☒ No - [Continue.]

OFFICE USE

326



Types of Hog Operations

Contractor



- The operation owns the hogs
- Someone else (contractee) raises the hogs
- The operation usually provides some inputs such as feed or veterinary services, but will depend on the contract.



Contractor Operation



1. On June 1, did this operation own or raise any hogs or pigs, regardless of location?
(Including hogs or pigs being raised under contract for you by someone else.)

☒ Yes - [Go to item 2.] ☐ No - 1a. Will anyone raise hogs or pigs on this operation at any time between now and December 1, 20XX?

- ☐ Yes = 1
☐ Don't Know = 2
☐ No = 3

Enter code, then
go to Section H.

Code

492

Hogs on the Total Acres Operated

2. On June 1, how many hogs and pigs were on the total acres operated?
(Include sows, gilts, boars, market hogs, unweaned pigs and hogs no longer used for breeding.).....

Head

324

[If no hogs are on the total acres operated, go to item 4.]

3. Are any of the (item 2) hogs or pigs owned by someone else?

☐ Yes - 3a. How many hogs and pigs owned by someone else were on this operation on June 1?.....

Head

322

3b. Who owns the hogs and pigs?.....

3c. Is this hog owner a contractor?

- ☐ Yes
☐ No

(Owner Name, Address, & Phone Number)

Name _____

Address _____

City, St., Zip _____

Phone _____

☐ No - [Continue.]

OFFICE USE
STATE FIPS

6326

OFFICE USE
POID

327



Contractor Operation



Hogs Owned by this Operation

4. On June 1, how many hogs and pigs did this operation own regardless of location?

(Include hogs or pigs being raised under contract for you by someone else.).....

Head

300

100 000

[If no hogs owned, go to Section H.]

5. Are any of these (item 4) hogs located on someone else's land or hog facility?

☒ Yes - 5a. On whose land or hog facility
are these hogs located?.....

Name Has 4 people raising hogs for this
Address operation near Springfield. Each person
City, St., Zip has 25,000 hogs, did not want to take
Phone time to provide the names.

☐ No - [Continue.]

6. Have you raised hogs or pigs under any other business name during the last 12 months?

☐ Yes - 6a. What is the other name?.....

Name _____
Address _____
City, St., Zip _____
Phone _____

☒ No - [Continue.]

OFFICE USE

326



Types of Hog Operations

Contractee



- Someone else (contractor) owns the hogs
- This operation raises the hogs
- This operation is usually paid a flat fee, by head or pig space.



Contractee Operation



1. On June 1, did this operation own or raise any hogs or pigs, regardless of location?
(Including hogs or pigs being raised under contract for you by someone else.)

☒ Yes - [Go to item 2.] ☐ No - 1a. Will anyone raise hogs or pigs on this operation at any time between now and December 1, 20XX?

- ☐ Yes = 1
☐ Don't Know = 2
☐ No = 3

Enter code, then
go to Section H.

Code

492

Hogs on the Total Acres Operated

2. On June 1, how many hogs and pigs were on the total acres operated?
(Include sows, gilts, boars, market hogs, unweaned pigs and hogs no longer used for breeding.).....

Head

324

4 000

[If no hogs are on the total acres operated, go to item 4.]

3. Are any of the (item 2) hogs or pigs owned by someone else?

☒ Yes - 3a. How many hogs and pigs owned by someone else were on this operation on June 1?.....

Head

322

4 000

3b. Who owns the hogs and pigs?.....

3c. Is this hog owner a contractor?

- ☒ Yes
☐ No

(Owner Name, Address, & Phone Number)

Name Best Hogs Ever

Address 123 Main St

City, St., Zip Anywhere, USA

Phone 888 777 1234

☐ No - [Continue.]

OFFICE USE
STATE FIPS

6326

OFFICE USE
POID

327



Contractee Operation



Hogs Owned by this Operation

4. On June 1, how many hogs and pigs did this operation own regardless of location?
(Include hogs or pigs being raised under contract for you by someone else.).....

Head

300

— — — —

[If no hogs owned, go to Section H.]

5. Are any of these (item 4) hogs located on someone else's land or hog facility?

☐ Yes - 5a. On whose land or hog facility
are these hogs located?.....

Name_____

Address_____

City, St., Zip_____

Phone_____

☐ No - [Continue.]

6. Have you raised hogs or pigs under any other business name during the last 12 months?

☐ Yes - 6a. What is the other name?.....

Name_____

Address_____

City, St., Zip_____

Phone_____

☐ No - [Continue.]

OFFICE USE

326



Types of Hog Operations

Independent and Contractor



- Situation:
 - The operation owns 5,000 hogs
 - The operation raises 3,000 of those hogs (independent)
 - The operation has someone else raise 2,000 hogs (contractor)



Independent and Contractor



1. On June 1, did this operation own or raise any hogs or pigs, regardless of location?
(Including hogs or pigs being raised under contract for you by someone else.)

☒ Yes - [Go to item 2.] ☐ No - 1a. Will anyone raise hogs or pigs on this operation at any time between now and December 1, 20XX?

- ☐ Yes = 1
☐ Don't Know = 2
☐ No = 3

Enter code, then
go to Section H.

Code

492

Hogs on the Total Acres Operated

2. On June 1, how many hogs and pigs were on the total acres operated?
(Include sows, gilts, boars, market hogs, unweaned pigs and hogs no longer used for breeding.).....

Head

324

3 000

[If no hogs are on the total acres operated, go to item 4.]

3. Are any of the (item 2) hogs or pigs owned by someone else?

☐ Yes - 3a. How many hogs and pigs owned by someone else
were on this operation on June 1?.....

Head

322

3b. Who owns the hogs and pigs?.....

3c. Is this hog owner a contractor?

- ☐ Yes
☐ No

(Owner Name, Address, & Phone Number)

Name _____

Address _____

City, St., Zip _____

Phone _____

☒ No - [Continue.]

OFFICE USE
STATE FIPS

6326

OFFICE USE
POID

327



Independent and Contractor



Hogs Owned by this Operation

4. On June 1, how many hogs and pigs did this operation own regardless of location?

(Include hogs or pigs being raised under contract for you by someone else.).....

Head

300

5 000

[If no hogs owned, go to Section H.]

5. Are any of these (item 4) hogs located on someone else's land or hog facility?

☒ Yes - 5a. On whose land or hog facility
are these hogs located?.....

Name_____Record as much information as possible

Address_____about the person (contractee) who is

City, St., Zip_____raising the 2,000 head of hogs

Phone_____

☐ No - [Continue.]

6. Have you raised hogs or pigs under any other business name during the last 12 months?

☐ Yes - 6a. What is the other name?.....

Name_____

Address_____

City, St., Zip_____

Phone_____

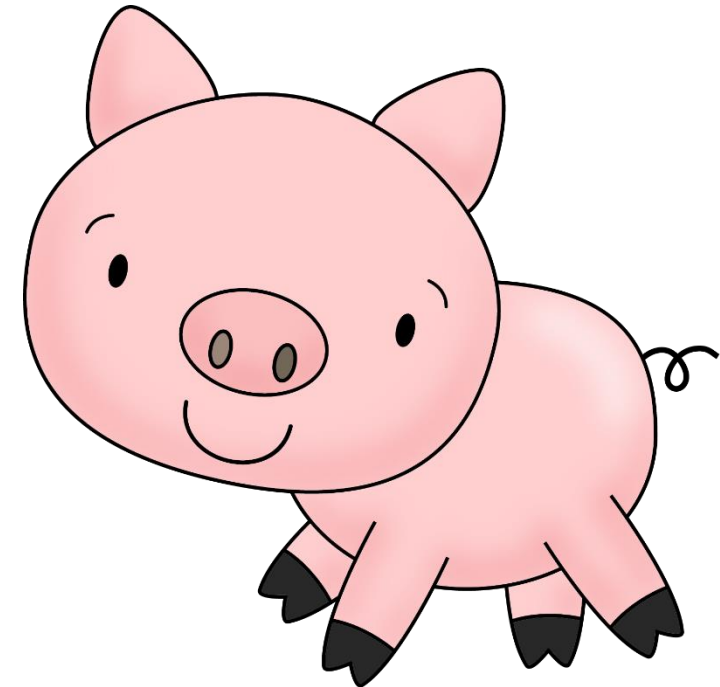
☒ No - [Continue.]

OFFICE USE

326



THANK
YOU





[Click Here to
return to
List of Topics](#)

Section H

Total Cattle and Calves



Kyle Nelson

Section H - Why?




Section H – CATTLE BOX

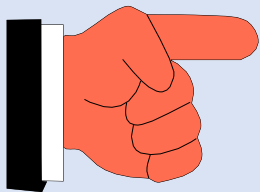
[Is the CATTLE BOX checked on Page X]?

☐ Yes - [Continue.]

☐ No - [Go to Section I - Sheep and Lambs.]

- Check to see if the CATTLE BOX was checked in Sec. C

CATTLE




- *Remember to follow the enumerator instructions very carefully*
- *Section H must be completed or estimated for every agricultural tract that has the CATTLE Box checked in Section C*



Section H – Screening Questions



SECTION H - TOTAL CATTLE AND CALVES

1. On June 1, were any cattle and calves, regardless of ownership, on the total acres operated?

(Cattle and calves on grazing land leased on a fee per head or animal unit month (AUM) basis should be included by the cattle owner, excluded by the land owner.)

☐ Yes - [Continue with item 2.]

☐ No - 1a. Were any cattle or calves on the total acres operated at any time during the period of January 1, (year) through May 31, (year)?

☐ Yes - [Enter 1 in code Box 493, then go to item 6.]

☐ No - Will there be any cattle on the total acres operated from now through December 31, (year)?

☐ Yes = 1 ☐ Don't Know = 2 ☐ No = 3

Enter code, then
go to Section I.

Code

493



Section H – Inventory



2. Of the total number of cattle and calves on hand June 1, how many were:

Head

a. Beef cows, including beef heifers that had calved?..... + 351

b. Milk cows, including any dry cows? (Exclude any heifers not yet freshened.) + 352

c. Bulls weighing 500 pounds or more?..... + 353

d. Heifers that had not calved, weighing 500 pounds or more:

(i) for beef cow replacement?..... + 354

(ii) for milk cow replacement?..... + 355

(iii) other heifers 500 pounds or more?..... + 356

e. Steers weighing 500 pounds or more?..... + 357

f. Heifer, steer, and bull calves weighing less than 500 pounds, including newborn calves? + 358

3. [Add items 2a through 2f]

Then the total cattle and calves on hand June 1 was:..... = 350

Is that correct? [If not, make corrections.]

Section H – Operation Types

Cow/Calf Operation



Feedlot Operation



Stocker Operation



Dairy Operation





Section H – On Feed



Cattle and Calves On Feed

We need to know about the cattle and calves on feed for the slaughter market.
Their ration would include grain, silage, hay, or protein supplement.

- INCLUDE cattle being fed by you for others.
- EXCLUDE any of your cattle being custom fed in feedlots operated by others.
- EXCLUDE cattle being "backgrounded only" for sale as feeders, for later placement on feed in another feedlot, or to be returned to pasture.
- EXCLUDE cows and bulls on feed.

4. How many cattle and calves were on feed June 1 that will be shipped directly from your feedlot to the slaughter market?.....

Head

652



Section H – Calf Crop



Calf Crop for (Year)

(Calves born on grazing land leased on a fee per head or animal unit month (AUM) basis should be included by the cattle owner, excluded by the land owner.)

5. Of the cows and heifers on the total acres operated on June 1, how many are expected to calve during the period June 1 through December 31, (year) ?.....

Head

361

6. Of the calves born on the total acres operated during the period January 1 through May 31, (year) , how many: (EXCLUDE calves purchased.)

Head

a. were on hand June 1?.....

+ 363

b. were sold, moved off the total acres operated, or slaughtered before June 1?.....

+ 364

c. had died before June 1? (EXCLUDE calves born dead.).....

+ 365

7. [Add items 6a through 6c]

Then the total calves born January 1 through May 31, (year) was:.....

= 362



Section H – Data Relationships



- Data Relationships to Consider:
 - If the operation has beef cows or milk cows, there should be a calf crop accounted for in question 6.
 - Calves on hand June 1 in question 6 should be consistent with calves reported in question 2.
 - The total calf crop for the entire year (questions 5 and 7 combined) should be close to the number of cows in question 2.

Sections I, J and K

[Click Here to
return to
List of Topics](#)



Cody Brokmeyer

Southern Plains Region



United States Department of Agriculture
National Agricultural Statistics Service



SECTION I & J

Sheep and Lambs & Goats and Kids

- Must be completed for every agricultural tract.
- This Year, If Any Present, or Refusal or Inaccessible?
 - Please observe and note as much as possible
 - Do you see any sheep, lambs, goats or kids?
 - What kind? (Angora, Milk, or Meat & Other)
 - How many?



Section I – Sheep and Lambs

By Location or Ownership

Eastern States

1. On June 1, were any sheep or lambs, regardless of ownership, on the total acres operated?

(INCLUDE Barbados and all hair breed sheep. Sheep and lambs on grazing land leased on a fee per head or animal unit month (AUM) basis should be included by the sheep owner, excluded by the land owner.)

Western States

1. On June 1, did this operation own or custom feed any sheep or lambs at any location?

(INCLUDE Barbados and all hair breed sheep.)



Section J - Goats

By Location or Ownership

Eastern States

1. On June 1, were any goats or kids, regardless of ownership, on the total acres operated?

Western States

1. On June 1, did this operation own any goats or kids at any location?



Question Format Change

This Year the “No” response is now composed of questions 2 and 3. Item code boxes have been eliminated

1. On June 1, were any sheep or lambs, regardless of ownership, on the total acres operated?
(INCLUDE Barbados and all hair breed sheep. Sheep and lambs on grazing land leased on a fee per head or animal unit month (AUM) basis should be included by the sheep owner, excluded by the land owner.)

670

☐ Yes - [Go to Section J.] ☐ No - [Continue.]

2. Were any sheep or lambs on the total acres operated at any time during the period of January 1,(year) through May 31, (year)?

1670

☐ Yes - [Go to Section J.] ☐ No - [Continue.]

3. Will there be any sheep or lambs on the total acres operated from now through December 31,(year)?

1671

☐ Yes ☐ Don't Know ☐ No



SECTION K - Equine

Provides indications of State and U.S. inventories of:

- Horses
- Ponies
- Mules
- Donkeys and Burros



Also provides information for states who conduct special projects for the equine industry



United States Department of Agriculture
National Agricultural Statistics Service



SECTION K - Equine

1. On June 1, were there any horses, ponies, mules, donkeys or burros, regardless of ownership, on the total acres operated?

☐ Yes - [Continue with item 2.] ☐ No - [Go to Section L.]

2. On June 1, how many [species] regardless of ownership, were on the total acres operated?..... Number

Horses or Ponies	Mules, Donkeys or Burros
209	208
211	212

3. How many of the (item 2) [species] does this operation own?..... Number



Thanks Everyone



United States Department of Agriculture
National Agricultural Statistics Service



June Area: Sections L - N

[Click Here to
return to
List of Topics](#)



Wendy Vance

Group Leader, Northwest Region



United States Department of Agriculture
National Agricultural Statistics Service



SECTION L: Other Ag Info

SECTION L - OTHER AGRICULTURAL INFORMATION

AGRICULTURAL LABOR

1. During 20xx, will this operation have anyone on the payroll to do agricultural work? (Include full-time and part-time workers, paid family members, and hired managers. Exclude contract labor.)

☐ Yes = 1 ☐ Don't Know = 2 ☐ No = 3.....

Code

990

Number

[If Yes] 1a. What will be (was) the largest number, including paid family members, on the payroll on any one day?.....

989



United States Department of Agriculture
National Agricultural Statistics Service

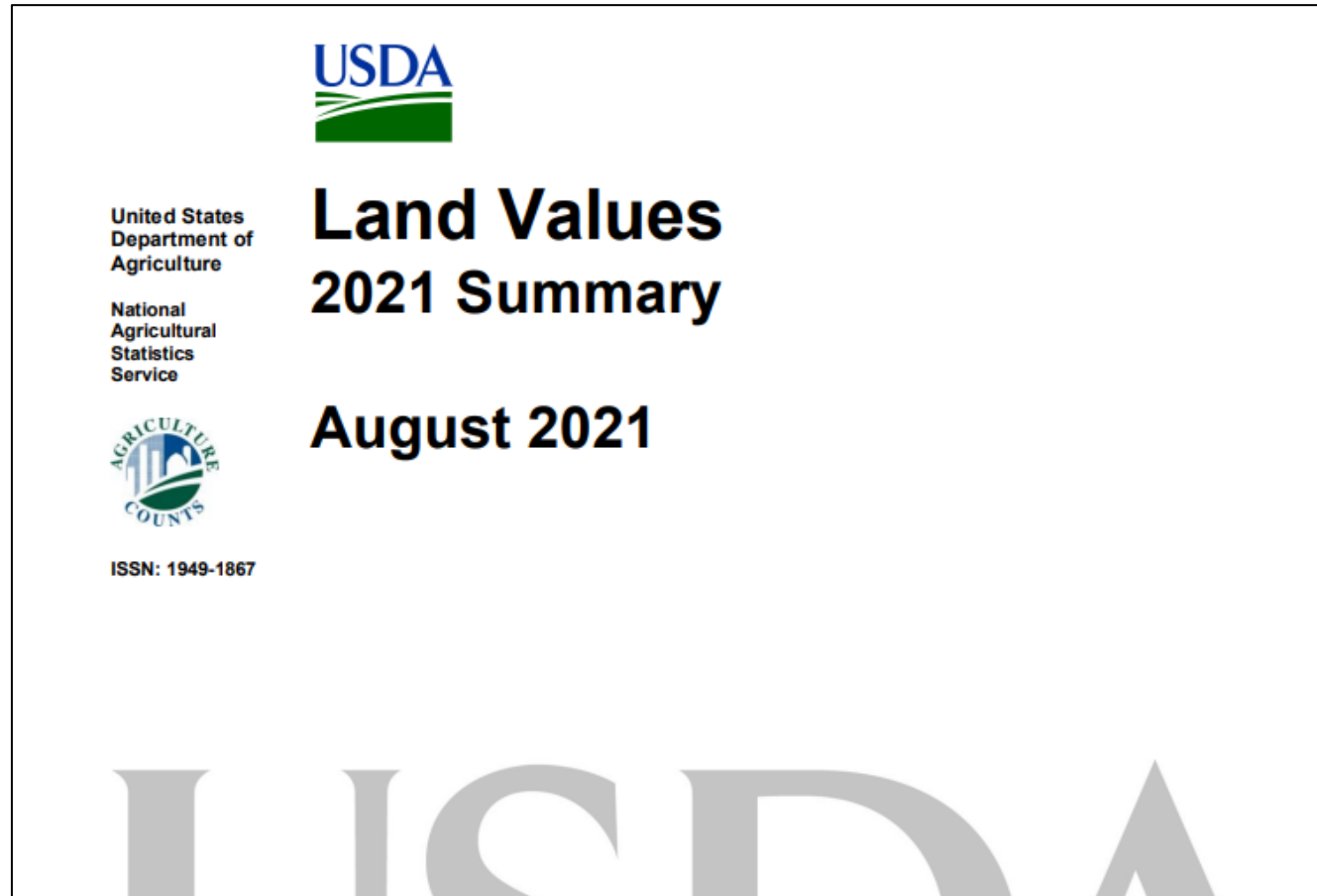


SECTION L: Other Ag Info

- Key Phrases:
 - “On the Payroll”: Will the worker receive a W-2 or 1099 from the farmer at the end of the year?
 - “To Do Agricultural Work”: Refer to Include/Exclude Statements in Interviewer’s Manual
- “YES” or “DON’T KNOW?”: operator could be included in the Labor Sample.



SECTION M: Land Values



United States Department of Agriculture
National Agricultural Statistics Service



SECTION M: Instructions

SECTION M - LAND VALUES

These next few questions are about the market value of land and buildings and are only used to estimate state and national farm land values.

- Market value is the value at which farm or ranch land could be sold under current market conditions and can be estimated based on recent appraisals or sales in your area.
- Market value is not a tax-assessed value. Your responses are not used for taxation purposes, either at the local, state or federal level.
- Your response will not be disclosed to any other government agencies.



United States Department of Agriculture
National Agricultural Statistics Service



Entire Farm - Market Value of Land and Buildings

Entire Farm - Market Value of Land and Buildings

1. What is your estimate of the total market value of all land, dwellings, barns and other buildings on the total acres operated? (Total acres operated reported in Section E, Item 3 code 900).....

Total Market Value

1990

a. Since June 1, 20xx did this market value increase, decrease or stay the same?

☐ Increase..... [Enter Code 1, then go to item b.]

☐ Decrease..... [Enter Code 2, then go to item b.]

☐ No Change..... [Enter Code 3, then go to Question 2.].....

Code

518

b. What percent change best describes the increase or decrease in the total market value since June 1, 20xx?

Percent

519



United States Department of Agriculture
National Agricultural Statistics Service



Tract Acres - Market Value per Acre

Now I would like to ask about the market value of the land you operate inside the red segment boundary that were reported in Section D.

[ENUMERATOR ACTION: Refer respondent to segment photo and tract acres recorded in Section D.]

2. For the acres reported within this red boundary (Section D), I need your best estimate of the market value of these acres by type of land. EXCLUDE the value of all dwellings and buildings.

[Check (√) if reported in Section D.]

	Dollars Per Acre
<input type="checkbox"/> a. Cropland? (INCLUDE fruit, nut, berry, vineyard and nursery land.).....	410
<input type="checkbox"/> b. Non-irrigated cropland? (INCLUDE fruit, nut, berry, vineyard and nursery land.).....	411
<input type="checkbox"/> c. Irrigated cropland? (INCLUDE fruit, nut, berry, vineyard and nursery land.).....	412
<input type="checkbox"/> d. Permanent pasture, grazing or grassland?.....	413



SECTION M: Land Values

- If the respondent is unable to report or give a reasonable estimate of the total value, write **DK** **next to the cell.**
 - In CAPI, enter DK or leave blank
- Unusually high or low market values should be accompanied by a comment, for example:
 - Sold Development Rights
 - High Value Neighborhoods



SECTION N: Economic Data

1. Please classify the operation in terms of the gross value of sales and government agricultural payments in 20XX.

INCLUDE

- sales of all crops, livestock, poultry, and livestock products (milk, eggs, etc.) sold in 20XX.
- the value of hay, silage, and other crops harvested, but not sold.
- the value of all crops, livestock, and poultry produced under contract in 20XX.
- Landlord's share of government payments and crops sold in 20XX.

EXCLUDE dollars received on land rented to others.



United States Department of Agriculture
National Agricultural Statistics Service



SECTION N: Economic Data

Total Value		Code	
\$ 0 ----	\$ 999	1	<input type="checkbox"/>
\$ 1,000 ----	\$ 9,999	2	<input type="checkbox"/>
\$ 10,000 ----	\$ 49,999	3	<input type="checkbox"/>
\$ 50,000 ----	\$ 99,999	4	<input type="checkbox"/>
\$ 100,000 ----	\$ 249,999	5	<input type="checkbox"/>
\$ 250,000 ----	\$ 499,999	6	<input type="checkbox"/>
\$ 500,000 ----	\$ 999,999	7	<input type="checkbox"/>
\$ 1,000,000 ----	\$ 4,999,999	8	<input type="checkbox"/>
\$ 5,000,000 and over		9	<input type="checkbox"/>

Code

860



SECTION N: Economic Data

2. [ENUMERATOR ACTION]

Is the 20XX gross value of sales and government agricultural payments for this operation less than \$1,000?

☐ Yes - [Go to Point Recording Sheet, page 18.]

☐ No - [Go to item 3, page 19.]



United States Department of Agriculture
National Agricultural Statistics Service



SECTION N: Point Recording Sheet

SECTION N - ECONOMIC DATA ON ENTIRE OPERATION (continued) POINT RECORDING SHEET (For operations less than \$1,000 in sales)

ENUMERATOR ACTION: For operations with less than \$1,000 in sales, record all 20XX crops, land uses, and livestock or poultry now on the total acres operated, then go to item 3.

Cropland		Acres	Hay		Acres	Vegetables/Melons		Acres
Abandoned Crops.....	022	.	Alfalfa.....	057	.	Cantaloupes.....	296	.
Cover Crop.....	023	.	Grain.....	058	.	Cucumbers.....	297	.
CRP/WRP.....	Section E		Other.....	059	.	Lima Beans.....	298	.
Idle Cropland.....	025	.	Woodland Crops		Acres	Peas (green).....	299	.
Summer Fallow.....	026	.	Cut Christmas Trees....	060	.	Pumpkins.....	301	.
_____	027	.	Maple (Number of Taps)	076		Snap Beans.....	302	.
			Short Rotation Woody Crops.....	078	.	Sweet Corn.....	303	.
			_____	079	.	Tomatoes.....	304	.
						_____	305	.
Government Payments		Whole Dollars	Indoor Nursery		Square Feet	Livestock		Number
CRP/WRP Payments.....	028		Mushrooms.....	134		Honey Bees (colonies).....	306	
Other Gov't Payments.....	029		_____	135		Bison.....	307	
Pasture/Rangeland		Acres	Outdoor Nursery		Acres	Cattle: Milk Cows.....	468	
Cropland used only for Pasture.....	030	.				Cattle: All Other.....	469	
Permanent Pasture.....	031	.					310	
Woodland Pasture.....	032	.						
Field Crops Intended								



United States Department of Agriculture
National Agricultural Statistics Service



SECTION N

Point Recording Sheet

Notes about the Point Recording Sheet:

- For CRP and WRP
 - Acres are recorded in Section E
 - Dollars recorded here

Government Payments	Whole Dollars
CRP/WRP Payments.....	028
	030

- For Woodland Crops
 - Acres: Cut Christmas Trees & Short Rotation Woody Crops
 - Taps: Maple

Woodland Crops	Acres	
Cut Christmas Trees....	060	.
Maple (Number of Taps)	076	
Short Rotation Woody Crops.....	078	.
	079	



SECTION N: Point Recording Sheet

Notes about the Point Recording Sheet:

- If the operation has less than \$1000 in sales, complete the Point Recording Sheet on page 18.
- Do not record any acres for the farmstead or waste
- Nursery Crops
 - Square Feet: Indoor nursery, floriculture, greenhouse or other horticultural crops
 - Acres: Outdoor Nursery

SECTION N: Type of Farm

SECTION N - ECONOMIC DATA ON ENTIRE OPERATION (continued) TYPE OF FARM

3. Of the farm or ranch income reported, which of these categories represents the largest portion of the gross income from the operation?

[If no income reported in 20XX, which category best describes the type of operation.]

- | | Code |
|---|----------------------------|
| 1 – Grains, Oilseeds, Dry Beans, and Dry Peas
(corn, flaxseed, grain silage and forage, grains and oilseeds, popcorn, rice, small grains, sorghum, soybeans, sunflowers, straw, etc.) | 1 <input type="checkbox"/> |
| 2 – Tobacco | 2 <input type="checkbox"/> |
| 3 – Cotton and Cottonseed | 3 <input type="checkbox"/> |
| 4 – Vegetables, Melons, Potatoes and Sweet Potatoes
(beets, cabbage, cantaloupes, pumpkins, sweet corn, tomatoes, watermelons, vegetable seeds, etc.) | 4 <input type="checkbox"/> |
| 5 – Fruit, Tree Nuts and Berries
(almonds, apples, blueberries, cherries, grapes, hazelnuts, kiwifruit, oranges, pears, pecans, strawberries, walnuts, etc.) | 5 <input type="checkbox"/> |
| 6 – Nursery, Greenhouse, Floriculture and Sod
(bedding plants, bulbs, cut flowers, flower seeds, foliage plants, mushrooms, nursery potted plants, shrubbery, sod, etc.) | 6 <input type="checkbox"/> |
| 7 – Cut Christmas Trees and Short Rotation Woody Crops | 7 <input type="checkbox"/> |
| 8 – Other Crops and Hay, CRP and Pasture
(grass seed, hay and grass silage, hops, maple syrup, mint, peanuts, sugarcane, sugarbeets, CRP, etc.) | 8 <input type="checkbox"/> |

Code

862



United States Department of Agriculture
National Agricultural Statistics Service



Thanks for Watching



United States Department of Agriculture
National Agricultural Statistics Service





[Click Here to
return to
List of Topics](#)

Section O – Technology Use



Peyton Mounce
Upper Midwest Region



Section O Purpose



- Collect information on computer use and internet access on farms and ranches
- Monitor trends and changes in the use of technology on farms and ranches
- Farm Computer Usage and Ownership Report

Sec. 0 – Technology Use

1. In the last 12 months, did this farm or ranch use precision agriculture practices to manage crops or livestock? This would include the use of global positioning (GPS) guidance systems, GPS yield monitoring and soil mapping, variable rate input applications, use of drones for scouting fields or monitoring livestock, electronic tagging, precision feeding, robotic milking, etc..

1165

1	<input type="checkbox"/>
3	<input type="checkbox"/>

 Yes
No



Sec. 0 – Technology Use

2. For this farm or ranch, do you (operator or partner(s)) own or use any of the following types of computers?

a. Desktop or laptop.....

7650	1 <input type="checkbox"/>	Yes	3 <input type="checkbox"/>	No
------	----------------------------	-----	----------------------------	----

b. Smartphone.....

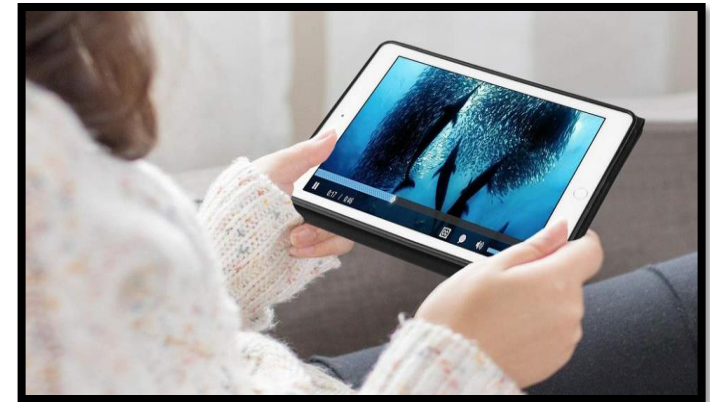
7651	1 <input type="checkbox"/>	Yes	3 <input type="checkbox"/>	No
------	----------------------------	-----	----------------------------	----

c. Tablet or other portable wireless computer.....

7652	1 <input type="checkbox"/>	Yes	3 <input type="checkbox"/>	No
------	----------------------------	-----	----------------------------	----

d. Some other type of computer, specify type: 7654 _____

7653	1 <input type="checkbox"/>	Yes	3 <input type="checkbox"/>	No
------	----------------------------	-----	----------------------------	----





Sec. O – Technology Use



3. For this farm or ranch, have you (operator or partner(s)) had access to the internet in the last 12 months?

- 7655 ☐ Yes, this operation has access to the internet.
- 3 ☐ No access to the internet at this farm or ranch, SKIP to Section P.



Sec. 0 – Technology Use



4. For this farm or ranch, in the last 12 months have you (operator or partner(s)) had access to the internet using a:

a. Cellular data plan for a smartphone or other mobile device?.....	7656	1	<input type="checkbox"/>	Yes	3	<input type="checkbox"/>	No
b. Broadband (high speed) internet service (cable, fiber optic, DSL service)?.....	7657	1	<input type="checkbox"/>	Yes	3	<input type="checkbox"/>	No
c. Satellite internet service?.....	7658	1	<input type="checkbox"/>	Yes	3	<input type="checkbox"/>	No
d. Dial-up internet service?.....	7659	1	<input type="checkbox"/>	Yes	3	<input type="checkbox"/>	No
e. Some other service, specify type: ⁷⁶⁶¹ _____	7660	1	<input type="checkbox"/>	Yes	3	<input type="checkbox"/>	No

Sec. 0 – Technology Use

5. For this farm or ranch, did you (operator or partner(s)) use the internet for any of the following in the last 12 months?

- a. Purchase agricultural inputs such as seed, fertilizer, chemicals, veterinarian supplies, feed, machinery, replacement parts, farm supplies, farm or ranch office equipment, etc.?....
- b. Conduct agricultural marketing activities such as direct sales of commodities, on-line crop and livestock auctions, on-line market advisory services, commodity price tracking, etc.?....
- c. Conduct any non-agricultural business such as making airline reservations?.....

7662	1 <input type="checkbox"/> Yes	3 <input type="checkbox"/> No
7663	1 <input type="checkbox"/> Yes	3 <input type="checkbox"/> No
7664	1 <input type="checkbox"/> Yes	3 <input type="checkbox"/> No

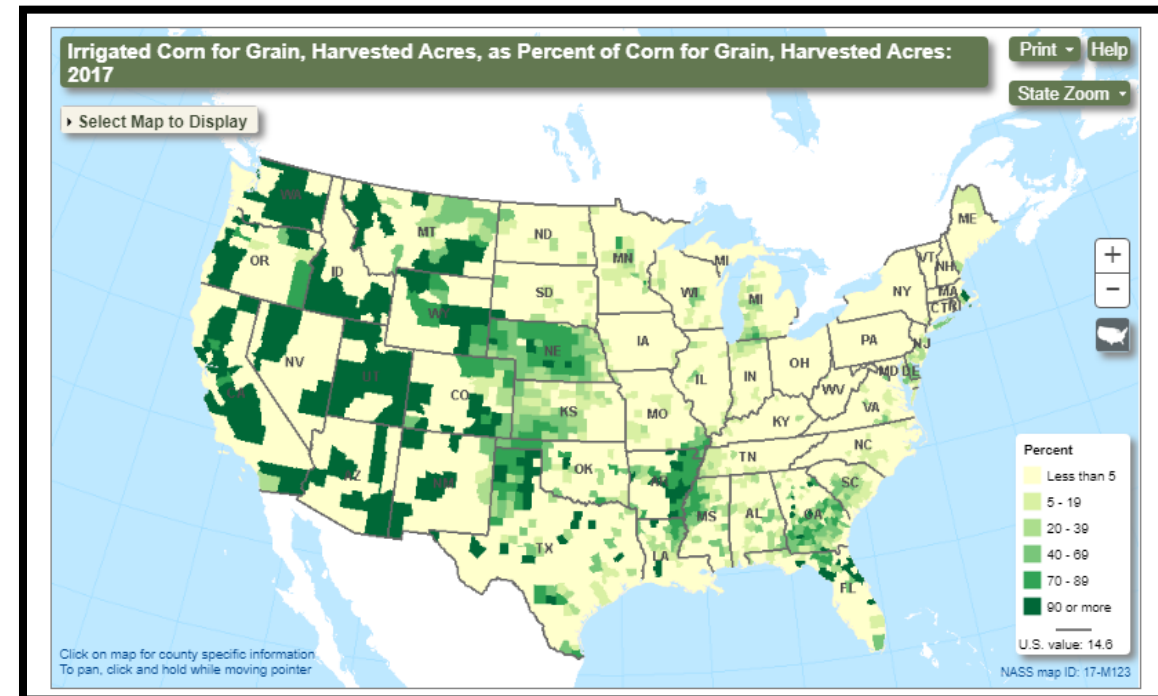
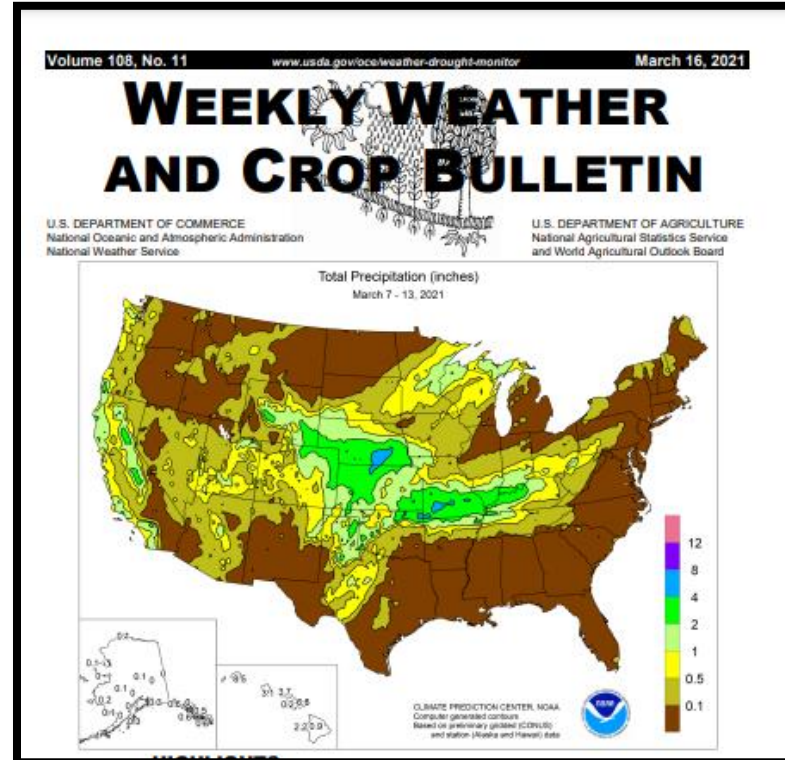


Sec. 0 – Technology Use

6. For this farm or ranch, did you (operator or partner(s)) access the National Agricultural Statistics Service (NASS) website to review reports or research information in the last 12 months?.....

7665

1 ☐ Yes 3 ☐ No



Sec. 0 – Technology Use

7. For this farm or ranch, did you (operator or partner(s)) access United States Department of Agriculture (USDA) websites, excluding the NASS website, in the last 12 months:

- a. To review reports or research information?.....
- b. To conduct agricultural or farm business (USDA service center eForms, access your USDA customer statement, etc.)?

7666			
1	<input type="checkbox"/>	Yes	3 <input type="checkbox"/> No
7667			
1	<input type="checkbox"/>	Yes	3 <input type="checkbox"/> No





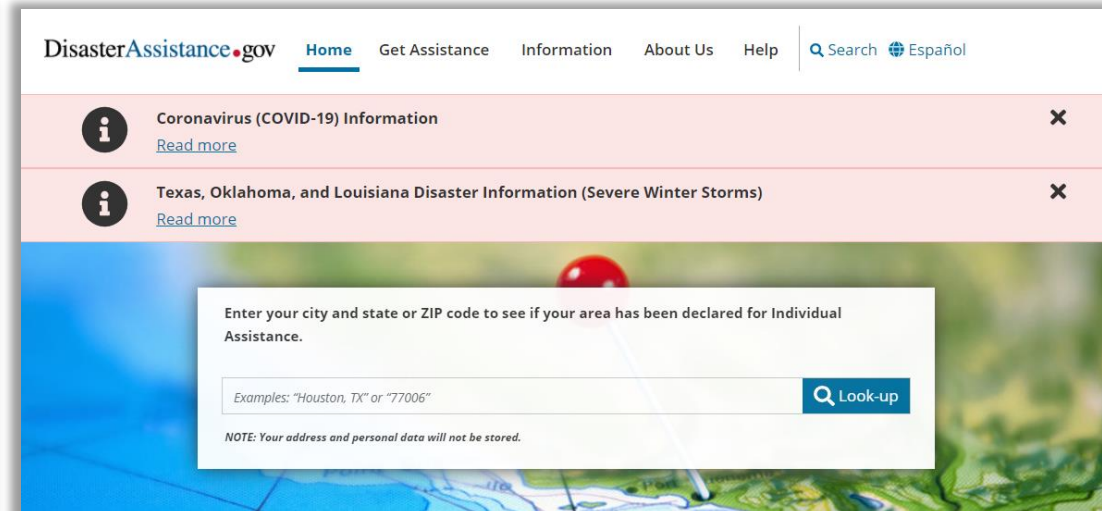
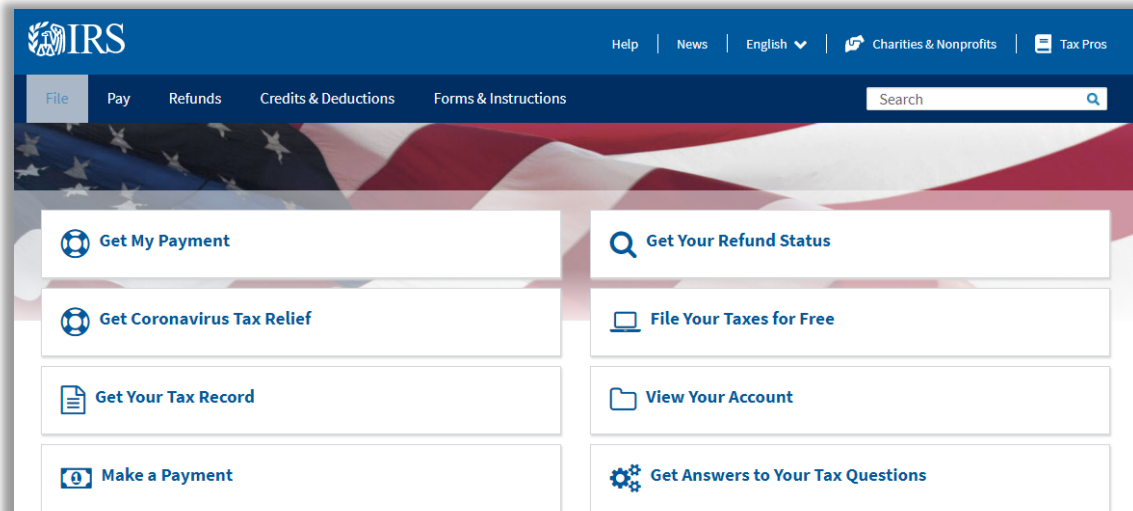
Sec. 0 – Technology Use

8. For this farm or ranch, did you (operator or partner(s)) access Federal government websites, excluding all USDA websites, in the last 12 months:

a. For any reason?.....

7668
1 <input type="checkbox"/> Yes 3 <input type="checkbox"/> No
7669
1 <input type="checkbox"/> Yes 3 <input type="checkbox"/> No

b. To conduct agricultural or farm business (Federal Disaster relief, etc.) ?.....



Forms and Instructions

1040 and Schedules 1-3
Individual Tax Return

Other 1040 Schedules
Information About the Other

Form 2290
Heavy Highway Vehicle Use Tax

Search Forms & Instructions



United States Department of Agriculture
National Agricultural Statistics Service



Thanks for Watching!



Section P: Personal Characteristics and the Conclusion

[Click Here to
return to
List of Topics](#)



Caellen Kimble
Mountain Region



United States Department of Agriculture
National Agricultural Statistics Service



Section P: Personal Characteristics

Goals of this section:

- To gather information on sex, age, ethnicity, race, and length of time operating the farm pertaining to individuals involved in agriculture.



United States Department of Agriculture
National Agricultural Statistics Service



Section P: Personal Characteristics

- Collect how many people were involved in decisions for this operation in the current year.

SECTION P - PERSONAL CHARACTERISTICS				
1. In 20XX, how many men and women were involved in decisions for this operation? INCLUDE family members and hired managers. EXCLUDE hired workers unless they were a hired manager or family member.		Men	Women	
		1571	1574	
2. Answer the following for up to four individuals who were involved in the decisions for this operation as of December 31, 20XX.				
	Person 1	Person 2	Person 3	Person 4
a. Full Name	1836	1852	1872	1873

- Identify up to the four people who are involved in decisions for this operation in the current year.



Section P: Personal Characteristics

- Full name, sex, and age of each decision maker as of December 31st of the previous year

	Person 1	Person 2	Person 3	Person 4
a. Full Name	1836	1852	1872	1873
b. Sex	1926 1 <input type="checkbox"/> Male 2 <input type="checkbox"/> Female	1586 1 <input type="checkbox"/> Male 2 <input type="checkbox"/> Female	1597 1 <input type="checkbox"/> Male 2 <input type="checkbox"/> Female	1614 1 <input type="checkbox"/> Male 2 <input type="checkbox"/> Female
c. What was the person's age on December 31, 20XX.	1925 years	1585 years	1596 years	1615 years



Section P: Personal Characteristics

- Ethnicity and race

<p>d. Is this person of Hispanic, Latino or Spanish origin?</p> <p>e. Race (Mark one or more)</p>	<p>Hispanic, Latino or Spanish origin</p> <p>1927 1 <input type="checkbox"/> Yes 3 <input type="checkbox"/> No</p>	<p>Hispanic, Latino or Spanish origin</p> <p>1587 1 <input type="checkbox"/> Yes 3 <input type="checkbox"/> No</p>	<p>Hispanic, Latino or Spanish origin</p> <p>1598 1 <input type="checkbox"/> Yes 3 <input type="checkbox"/> No</p>	<p>Hispanic, Latino or Spanish origin</p> <p>1622 1 <input type="checkbox"/> Yes 3 <input type="checkbox"/> No</p>
	<p>Mark one or more</p> <p>2701 <input type="checkbox"/> White</p> <p>2702 <input type="checkbox"/> Black or African American</p> <p>2703 <input type="checkbox"/> American Indian or Alaska Native</p> <p>Specify Tribe:</p> <p>2733 _____</p> <p>2705 <input type="checkbox"/> Asian</p> <p>2704 <input type="checkbox"/> Native Hawaiian or Other Pacific Islander</p>	<p>Mark one or more</p> <p>1801 <input type="checkbox"/> White</p> <p>1802 <input type="checkbox"/> Black or African American</p> <p>1803 <input type="checkbox"/> American Indian or Alaska Native</p> <p>Specify Tribe:</p> <p>1833 _____</p> <p>1805 <input type="checkbox"/> Asian</p> <p>1804 <input type="checkbox"/> Native Hawaiian or Other Pacific Islander</p>	<p>Mark one or more</p> <p>1901 <input type="checkbox"/> White</p> <p>1902 <input type="checkbox"/> Black or African American</p> <p>1903 <input type="checkbox"/> American Indian or Alaska Native</p> <p>Specify Tribe:</p> <p>1933 _____</p> <p>1905 <input type="checkbox"/> Asian</p> <p>1904 <input type="checkbox"/> Native Hawaiian or Other Pacific Islander</p>	<p>Mark one or more</p> <p>1616 <input type="checkbox"/> White</p> <p>1617 <input type="checkbox"/> Black or African American</p> <p>1618 <input type="checkbox"/> American Indian or Alaska Native</p> <p>Specify Tribe:</p> <p>1619 _____</p> <p>1620 <input type="checkbox"/> Asian</p> <p>1621 <input type="checkbox"/> Native Hawaiian or Other Pacific Islander</p>



Section P: Personal Characteristics

- Year each person began to operate any part of THIS operation and year each person began to operate ANY farm operation

f. In what year did this person begin to operate any part of THIS operation?	1930	1584	1595	1627
g. In what year did this person begin to operate ANY farm operation?	2834	1851	1871	1628



Conclusion

1. **SURVEY RESULTS:** To receive the complete results of this survey on the release date, go to: nass.usda.gov/results

To have a brief summary emailed to you, please enter your email address:

1095



United States Department of Agriculture
National Agricultural Statistics Service



Conclusion

Operation Email (if different from above)		Operation Phone:	
9937	9936	check if cell phone	
	()	<input type="checkbox"/>	

Respondent Name:		Respondent Phone (if different from above)	
9912	9911	check if cell phone	9910 MM DD YY
	()	<input type="checkbox"/>	Date: _ _ _ _ _

This completes the survey. Thank you for your help.



Conclusion

- Be sure to fill out the bottom of the back page!

Can only code as
Complete,
Estimated Refusal,
or Estimated Inaccessible

OFFICE USE											
Response		Respondent		Mode		Enum.	Eval.	Optional Use			
1-Comp 5-R – Est 6-Inac – Est	9901	1-Op/Mgr 2-Spouse 3-Acct/Bkpr 4-Partner 9-Other	9902	2-PATI	9903	9998	9900	9907	9908	9906	9916
S/E Name											



Conclusion

- Review the complete questionnaire before entering it in CAPI on the iPad.
- Remember to include any notes taken when entering in the information from the questionnaire in CAPI on the iPad.



Thanks for all your hard work!!



United States Department of Agriculture
National Agricultural Statistics Service

