

# 2024 June Area Survey Presentations

## First 12 topics:

1. [Introduction – 2](#)
2. [June Area Purpose – 9](#)
3. [Maps and Photos – 33](#)
4. [Screening Form – 46](#)
5. [Facepage, Sec. A, C – 76](#)
6. [Section D – 92](#)
7. [Sec. E-F – 113](#)
8. [Sec G \(Hogs\) – 133](#)
9. [Sec H \(Cattle\) – 151](#)
10. [Sec I-K – 160](#)
11. [Sec L-N – 167](#)
13. [Sec P, Conclusion – 183](#)

*The topics, CAPI-related & Enumerator Testimonials, do not have accompanying slides.*



# Introduction to June Area

[Click here to return to the List of Topics](#)



STEPHEN HABETS  
HEARTLAND FIELD OFFICE



**United States Department of Agriculture**  
National Agricultural Statistics Service



# Videos

- Introduction (this one)
- Purpose of June Area
- Maps and Photos
- Screening Form
- Facepage, Sec. A and C: Operation Description, Sections to be Completed
- Sec. D: Crops and Land Use on Tract
- Sec. E-F: Total Acres Operated and Land Use, Storage
- Sec. G: Hogs
- Sec. H: Cattle
- Sec. I-K: Sheep, Goats, Equine
- Sec. L-N: Labor, Land Values, Economic Data
- Sec. P, Conclusion: Personal Characteristics
- CAPI Video



# Impact of Area

- Follow on surveys
  - Objective yield
  - Quarterly Agricultural
  - ARMS surveys
- Statistical Coverage and Evaluation of List Completeness
  - Ensuring geographical coverage of commodities
  - Percent of operations on list



# Changes from Last Year

- **Sample changes:**

- The 2024 June Area Survey (JAS) sample sizes were unchanged for most states
- Missouri and Ohio both received the remaining 40% of their segments in 2024
- Louisiana and Tennessee both received 100% new segments in 2024



# Changes from Last Year

- **Section D: (Listed Crops added)**
  - State specific changes in Colorado, Indiana, Washington, Missouri, Oregon, and Idaho
- **Section D: (Listed Crops dropped)**
  - State specific changes in Colorado, Washington, Missouri, Oregon, California, Pennsylvania, Virginia, Delaware, South Carolina, North Carolina, Arkansas, New Jersey, New Mexico, Louisiana, Georgia and Idaho
- **Section O: Technology Use**
  - Removed



# Changes from Last Year continued

- **Section R (Conclusion)**
  - **Dropped item code**
    - 1095 (To have a brief summary emailed to you, please enter your email address)
  - **Added the following:**
    - Item code 9929 (Operator Email)
    - Item code 9918 (Operator Phone)
    - Item codes 9917 and 9920 (Check to receive the results by email)



# Thank you!



**United States Department of Agriculture**  
National Agricultural Statistics Service







[Click here to  
return to the  
List of Topics](#)

# June Area Training

(Project Code 124)



**Cody Brokmeyer**  
Deputy Director, Southern Plains Region



# June Area Training

(Project Code 124)

Why is NASS Data Important?

Why Should Operators Respond?

How Does June Area Fit In?



# NASS Mission Statement

*“To Provide timely, accurate, and useful statistics  
in service of US Agriculture.”*

- **Timely:**

- Provide objective and unbiased statistics on a preannounced schedule that is fair and impartial to all market participants.
- Surveys revolve around a reference date with data collection times dictated by specific due dates.
  - Example: Yield reports have a congressional mandate - data has to be published around the 12<sup>th</sup> of the month, and still reference the 1<sup>st</sup> of the month.



# NASS Mission Statement

*“To Provide timely, accurate, and useful statistics  
in service of US Agriculture.”*

- **Accurate:**
  - Gather data in a confidential, systematic, unbiased way.
- **Useful:**
  - Provide publicly available results benefiting the entire industry.
    - Helps create a stable economic atmosphere and reduced production risk



# About NASS

*National Agricultural Statistics Service*

## **The Fact Finders for American Agriculture**

- One of 17 agencies within the USDA
- Washington DC headquarters unit
- 12 Regional Field Offices
- St. Louis National Operations Division
- 4 Data Collection Centers (DCCs)
  - St. Louis, Arkansas, Oklahoma, Montana/Wyoming

## About NASS (continued)

- Surveys farmers & ranchers each year:
  - Mail, Internet, Telephone, Personal Interviews
  - Data is free and publicly available
  - Hundreds of statistical reports published annually
- Every 5 years – complete Census of every *U.S. agricultural operation*

## About NASS (continued)

### What We Are **NOT**

- We are **NOT** political appointees
- We are **NOT** a regulatory body
- We are **NOT** policymakers
- We are **NOT** market commentators
  - NASS provides data and users interpret how it applies to their situation



# Confidentiality

- Information we gather is personal and sensitive.
- Laws and regulations governing NASS **guarantee** respondents that information given will be kept strictly confidential and used for statistical purposes only.



# Confidentiality (continued)

- Data must never be shared or discussed with anyone who is not a NASS employee.
  - Enumerators must not discuss data with family, friends, or colleagues.
- To protect the public trust - No breach of confidentiality will be tolerated.
  - Signed Confidentiality Certificate
  - A breach of confidentiality is grounds for immediate dismissal.
  - Violators may also face a fine of \$250,000 and a sentence of up to five years imprisonment.

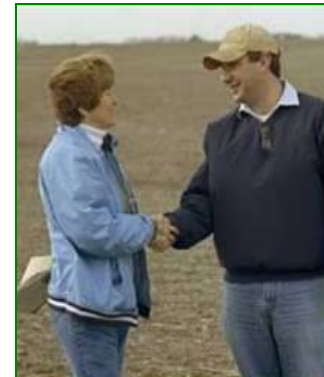


# Confidentiality - PII

- Personally Identifiable Information (PII)
  - Names
  - Addresses
  - Phone Numbers
  - Data
- Must be protected at all times, not just when mailing!  
Please keep confidential and secure at all times.

# Our Job: Trust and Respect

- We are honest and impartial in the performance of our duty, and trustworthy in our interactions with others.
- Why is this important?
  - Most surveys are voluntary.
  - Key to operator participation - Won't share information if trust and respect are missing.
  - Affects our credibility.
  - People's livelihoods depend on our data.
  - As a government agency, this is our mandate.



# Your Role - NASDA

*National Association of State Departments of Agriculture* 

- A nonpartisan, nonprofit association representing the elected and appointed commissioners, secretaries, and directors of the departments of agriculture in all fifty states and four U.S. territories.
- NASDA enhances agriculture by:
  - Forging partnerships
  - Creating consensus for sound policy outcomes between state departments of agriculture, the federal government, and stakeholders.





# Your Role (continued)

*National Association of State Departments of Agriculture* **NASDA**



## **Partnerships**

- Measuring Agriculture's Success
  - Employs over 3,000 enumerators to collect agricultural data for the National Agricultural Statistics Service (NASS). *This partnership began in 1972.*
- Promoting Agriculture
  - Instrumental in Farm Bill policy
  - Conducts two trade shows through USDA's Foreign Agricultural Service (FAS) Market Access Program (MAP). These shows are held annually in Chicago and Miami and attract buyers from around the world seeking American agricultural products.
- Food Safety
  - The data collected provides critical information to help plan and carry out implementation of a national produce safety rule and the preventive controls for animal food rule. (Partnership with FDA)

# NASS/NASDA Relationship

*A cooperative partnership. NASS determines what services are needed, how & when they are delivered, and whether or not the service is acceptable.*



*NASDA, in turn, provides those services.*



## NASS Responsibilities

- Defines surveys
- Methodology and Criteria
- Provides training
- Furnishes assignments, forms, supplies, specialized equipment, etc.
- Monitors job performance
- Provides feedback

## NASDA Responsibilities

- Employs & manages enumerators
- Hires, promotes & dismisses enumerators
- Enumerators conduct most of the interviews

# Why *YOU* Are Important

- You (*the enumerator*) are Vital to the success of NASS:
  - You are *the* data collectors.
  - You are the public “voice” of NASS.
  - You are the key to quality information.



The screenshot displays the USDA National Agricultural Statistics Service website. At the top, there are logos for USDA and Agriculture Counts, along with social media icons for Twitter, YouTube, RSS, and Facebook. A search bar is located in the top right corner. The main navigation menu includes links for Data & Statistics, Publications, Newsroom, Surveys, Census, About NASS, Contact Us, and Help. The central focus is a large graphic with the text "Interactive Data Visualization" and a call to action: "Click for data visualization on crop and livestock production." Below this, there are sections for "Today's Reports" (dated May 03, 2017) and "Headlines" (dated 04/20/17).

# Teamwork



**On Time:** We meet published due dates and deliver high quality service to customers.

**Error-Free:** We strive to release official estimates without error, removing the need to issue errata.

**Accurate:** We strive to provide the best official estimates the first time, minimizing the need for revisions.

- Work together to ensure timeliness, accuracy, and usefulness.
- Support team & NASS values





# Purpose of Surveys

- **Why have Agricultural Surveys in General?**
  - NASS is responsible for preparing County, State and National crop and livestock estimates for the USDA.
  - Agricultural Surveys obtain data from farmers and ranchers all over the Nation.
  - These surveys provide the basis for estimates of this season's crop production and supplies of grain in storage.
  - Survey results also provide the foundation for setting livestock and poultry inventory numbers.

# Purpose of Surveys (Continued)

- **Why have Agricultural Surveys in General?**
  - Estimates derived from these surveys supply basic information needed by farmers to make decisions for both short-term and long-range planning. These estimates might influence a farmer to:
    - Increase or reduce production.
    - Place more or fewer cattle on feed.
    - Expand or build a new facility or acquire more land.
    - Plant or harvest a particular crop.
    - Hold or sell crops now in storage, etc.

# Who Uses This Data?

- Farmers and ranchers:
  - Make decisions about what and how much to grow or raise.
  - Develop marketing plans and determine best time to sell stored crops.
- Agribusinesses/Processors:
  - Help food processing plants, farm input companies, and other businesses decide where to locate their operations so they're close to areas of heavy production.
  - Serve producers more cost-effectively.



# Who Uses This Data? (continued)

- Government agencies:
  - Determine key legislative decisions for the industry.
  - Plan and administer Federal and State programs in areas such as consumer protection, conservation, foreign trade, education, and recreation.
- Media:
  - Create context for news stories.
  - Inform readers and promote industry issues.



# Where are the Data?

NASS publishes nearly 500 agriculture statistical reports each year.  
 PLUS many other publications at the individual state level.

Go to [www.nass.usda.gov/](http://www.nass.usda.gov/)

Click on the tab “Publications”

From here, you can find:

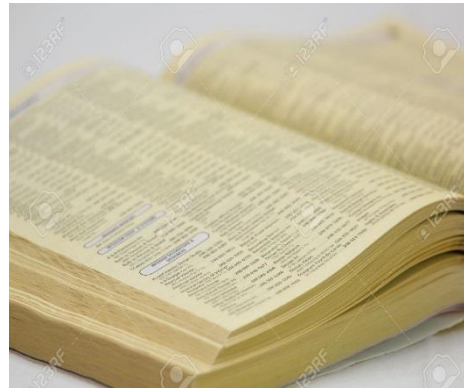
- The most requested reports
- OR
- a specific report by month or topic



# The 3 Types of NASS Surveys

## CENSUS OF AGRICULTURE

- **Census**
  - Everyone (*we know of*)
  - Every 5 years



- **List**
  - Directory
  - Incomplete



- **Area**
  - Complete

# June Area: Big Picture Objective

- Find the segment
- Find all operators in the segment (not necessarily land *owners*)
- Assign each operator a tract letter
- Account for all operators in the screener
- Screen for Agriculture
  - Crops, livestock, grain storage
- Account for all agriculture in an Ag Tract Questionnaire
- Account for all land in the segment



United States Department of Agriculture  
National Agricultural Statistics Service



---

**THANK YOU FOR WATCHING.**



# Maps and Photos

[Click here to return to the List of Topics](#)



Justin Cech  
Northern Plains Region



**United States Department of Agriculture**  
National Agricultural Statistics Service



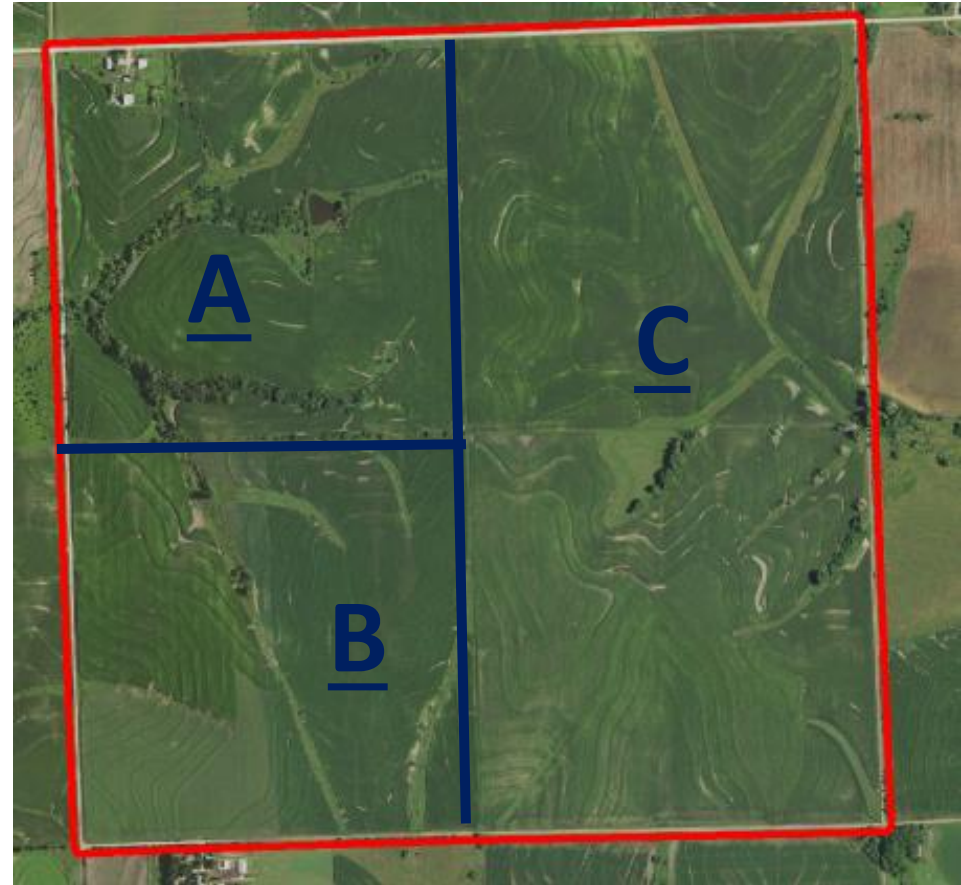
# Key Terms

- Segment: sampled land area with identifiable boundaries



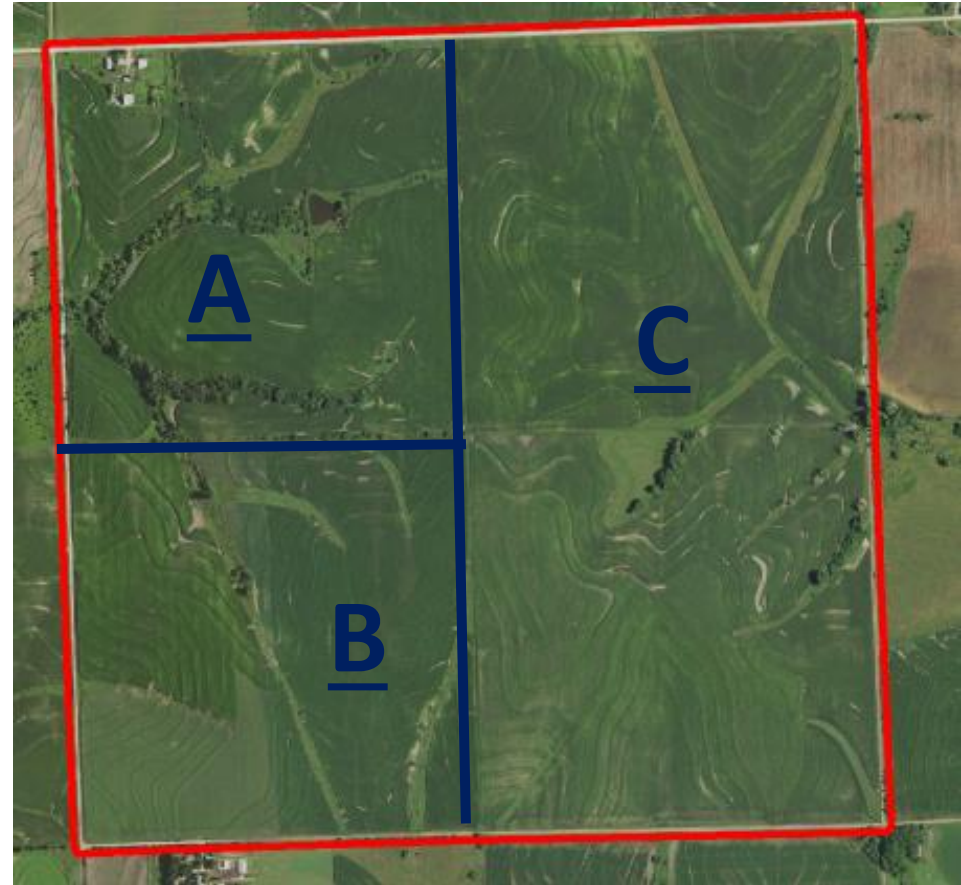
# Key Terms

- Segment: sampled land area with identifiable boundaries
- Tract: land inside segment under one operating arrangement



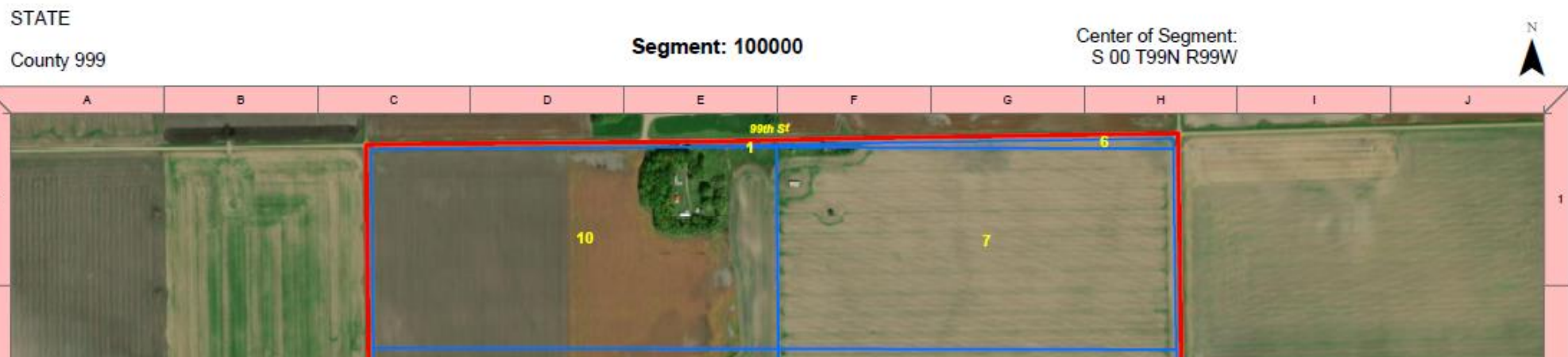
# Key Terms

- Segment: sampled land area with identifiable boundaries
- Tract: land inside segment under one operating arrangement
- Field: continuous area of land devoted to one crop or land use



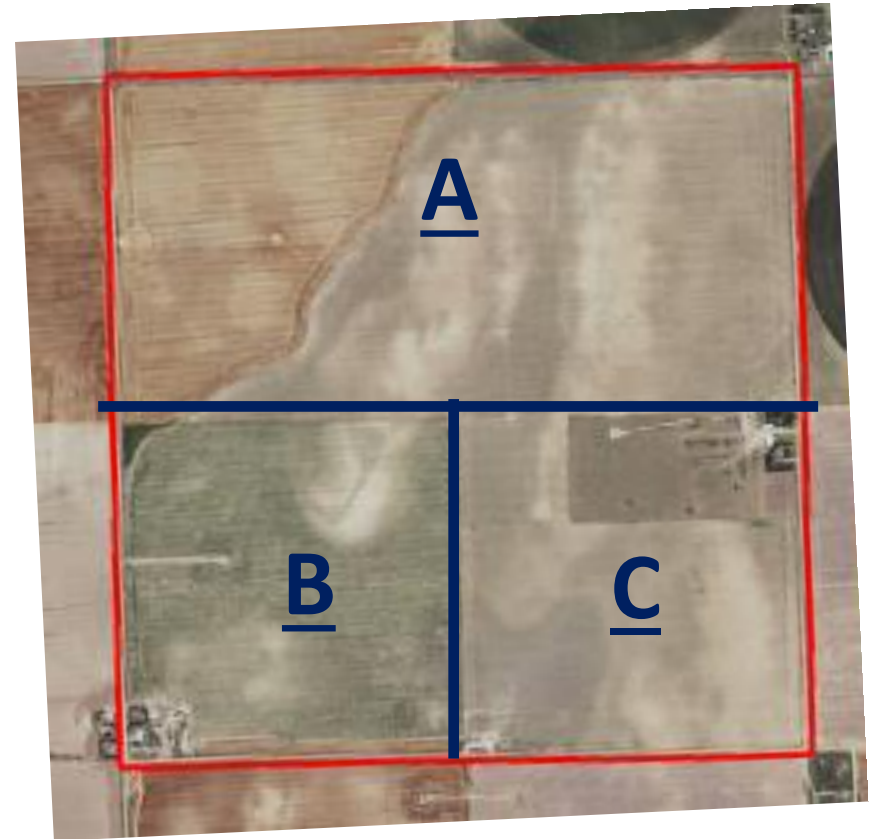
# Parcel/County Maps

- Familiarize yourself with the Segment location on the parcel/county maps
- Utilize the alpha-numeric grid system on the Parcel/FSA map
- The Township, Range & Section numbers are printed on the top right
- The Survey Code for [agcounts.usda.gov](http://agcounts.usda.gov) is printed on the screening jacket



# Aerial Photos

- Determine Segment and Tract boundaries
- Estimate acreages
- Photos are used for 5-7 years
- Drawing Lines
  - Use a straight-edge whenever possible
- Care
  - Store in box provided
  - Protect from dirt and weather
  - Use photo pens provided



# Assigning Tract Letters

- **Blue lines and CAPITAL letters**
  - Underline tract letters (AT LEAST N, Z, M, W, I, and H)
- Assign a separate tract letter for each operator.
  - If operation has two or more separate parcels in a segment, draw off each parcel separately, but assign the same tract letter.

John Jones <b>A</b>	Bill Riggs <b>B</b>	John Jones <b>A</b>
Susan Hall <b>C</b>		



# Assigning Tract Letters

- A separate line and tract letter must be used for each land arrangement (individual, partnership, or managed), even if the same person is the operator.

John Jones (Individual Operation) <b><u>A</u></b>	John & Al Jones John Jones (Partnership) <b><u>B</u></b>	Able Farms Ron Fast (Managed Operation) <b><u>C</u></b>
Ron Fast (Individual Operation) <b><u>D</u></b>		





# Assigning Tract Letters

## Returning Segments

- If there is a new Tract operator, assign them the next unused letter

John Jones <u>A</u>	Bill Riggs <u>B</u>	Henry Adams <u>C</u>
Susan Hull <u>D</u>		

John Jones <u>A</u>	Bob White <u>E</u>	Henry Adams <u>C</u>
Susan Hull <u>D</u>		



# Assigning Tract Letters

- Continuous non-ag tracts can be grouped together, drawn off and assigned one tract letter (NO AG POTENTIAL)
- Parcels of woods and idle open land should not automatically be considered non-agricultural



# Example

Last Year

Homer Simpson <u>A</u>	
<u>B</u> Ned Flanders	<u>C</u> Barney Gumbal

This Year

Darth Vadar <u>D</u>	Han Solo <u>E</u>
Luke Skywalker <u>G</u>	Sky-Solo LLP. Luke Skywalker <u>H</u>
	Princess Leah Han Solo Mgr. <u>F</u>
<u>B</u> Ned Flanders	<u>C</u> Barney Gumbal



# And Remember

- Do not write names, addresses, crops, etc. onto aerial photo
- **Blue** = **Tract** Lines and Letters
- **Red** = **Field** Lines and Numbers (NO LONGER NECESSARY)
- Review
  - Segment Numbers
  - Tract Letters
- Check your work
  - Complete summary on back of screening form



# Thank you for your hard work!



**United States Department of Agriculture**  
National Agricultural Statistics Service





[Click here to  
return to the  
List of Topics](#)

## Screening Form



Amber Elliott  
Eastern Mountain Region

# Screening Form

The Area Screening form is used to:

- Record the names and addresses of all tract operators
- Verify presence of ag activity or potential
- Enter the information into the June Area CAPI Instrument

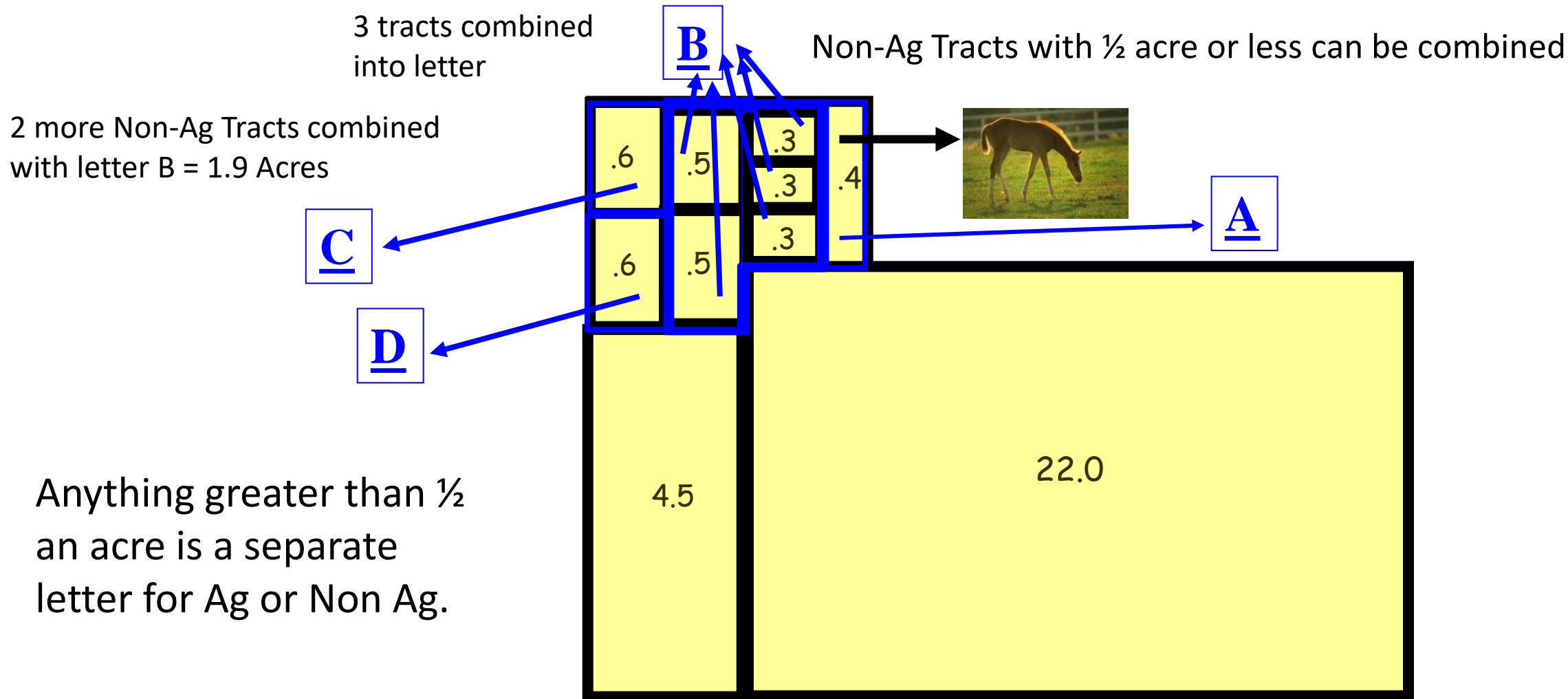


# What is the 1/2 Acre Rule

	Visible Ag Activity	No Visible Ag Activity
<b>Under 1/2 Acre</b>	<ul style="list-style-type: none"><li>• Assign tract letter</li><li>• Complete tract questionnaire</li></ul>	<ul style="list-style-type: none"><li>• Assume non-ag tract</li></ul>
<b>Over 1/2 Acre</b>	<ul style="list-style-type: none"><li>• Assign tract letter</li><li>• Complete tract questionnaire</li></ul>	<ul style="list-style-type: none"><li>• Interview operator to determine if they operate a farm</li></ul>



# 1/2 Acre Rule





# Screening Form



[YEAR] JUNE AREA SURVEY SCREENING FORM - VERSION C

OMB No. 0535-0213  
Approval Expires: 5/31/ [YEAR]  
Project Code: 124  
Survey ID: 3838



**USDA/NASS**  
National Operations Division  
9700 Page Avenue, Suite 400  
St. Louis, MO 63132-1547  
Phone: 1-888-424-7828  
Fax: 1-855-415-3687  
Email: [nass@usda.gov](mailto:nass@usda.gov)  
KS, NE, NM, OK, TX

State	Stratum	Segment
<u>99</u>	<u>1855</u>	000 <u>103095</u>

INTRODUCTION

Part 1 of 1

County AGLAND

940

SURVEY CODE: 4800-12AB-CDEF



# Online Parcel Map Instructions



If a respondent no longer has a copy of the map sent in the mail or if you are calling a respondent that was not mailed a packet, a copy of the map can be accessed on the web.

Part   1   of   1    
County   AGLAND    
            940  

SURVEY CODE: 4800-12AB-CDEF

*Survey Code is located on the front page of the screening form, underneath County Name.*

# Online Parcel Map Instructions

To access the web map:

GO TO [www.agcounts.usda.gov](http://www.agcounts.usda.gov)

ENTER the Segment SURVEY CODE and click CONTINUE

Provide respondent with:

- Website
- Survey Code

Click on “Submit”



ENTER YOUR UNIQUE SURVEY CODE



**SURVEY CODE**

XXXXXXXXXX 01 01 2723 12222221 71 10000  
MASS FARMS INC 20 123  
LOVELY FARMER 00 307 359  
12300 TRACTOR PL  
SOMEWHERE SD 12345-6788

Submit & Get Survey(s)



# Online Parcel Map Instructions



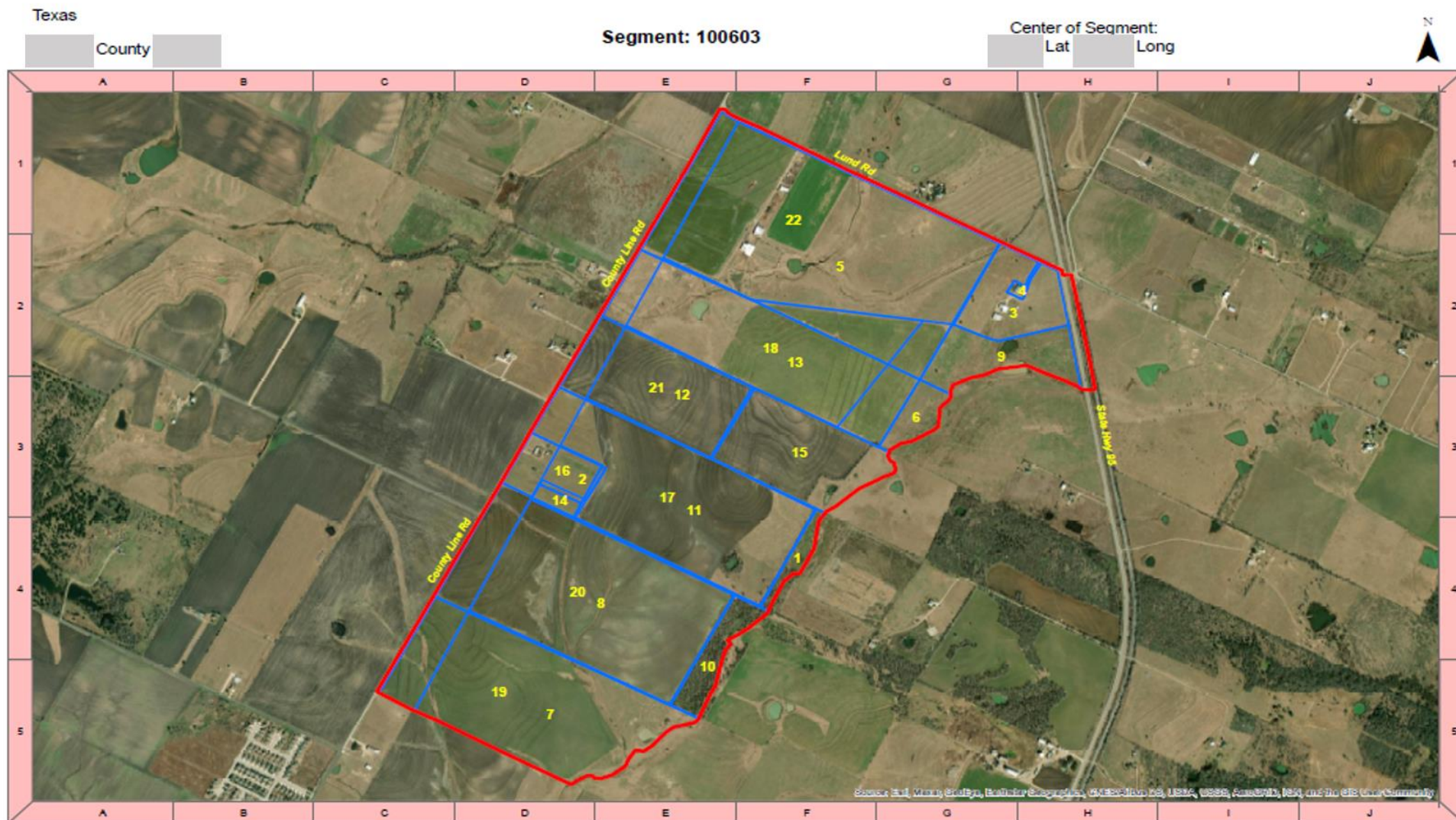
**STATE: 31 SEGMENT: 130011 - NE - 31**

Survey Name	Due Date	Status	Action
JUNE AREA SURVEY SCREENING FORM - 20XX-06-01 - 3838 - 592347	Submit By: 06/11/20XX	Available	<a href="#">Open Area Map</a>

To go directly to the Segment Parcel Map, click on the Open Area Map icon.

# Online Parcel Map Instructions

When the respondent has completed his/her review of the map, instruct them to close it.





# Screening Form



## INTRODUCTION

[Introduce yourself and ask for the operator. Rephrase in your own words.]

I am working on the June Agricultural Survey. This is a national survey where agricultural producers are asked to provide information on crops and livestock.

The information you provide will be used for statistical purposes only. Your responses will be kept confidential and any person who willfully discloses ANY identifiable information about you or your operation is subject to a jail term, a fine, or both. This survey is conducted in accordance with the Confidential Information Protection and Statistical Efficiency Act of 2018, Title III of Pub. L. No. 115-435, codified in 44 U.S.C. Ch. 35 and other applicable Federal laws. For more information on how we protect your information please visit: <https://www.nass.usda.gov/confidentiality>. Response is voluntary.

The area of land shown on this photo (map) has been selected for this survey.

[Refer respondent photo or map. Provide segment boundaries, houses and other identifying landmarks to help the respondent become familiar with the segment.]



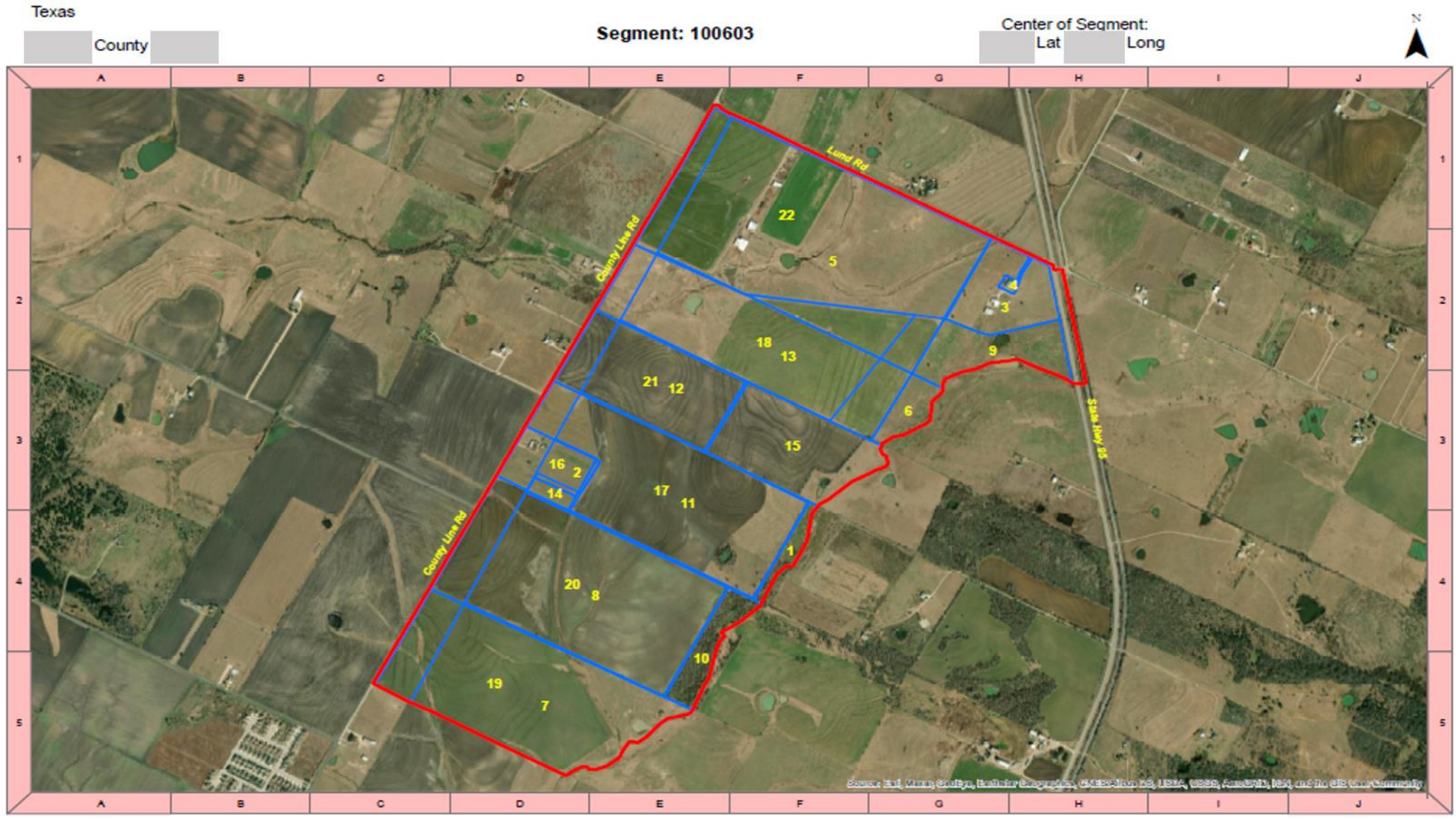
# Screening Form



1. On June 1, did you operate land inside these **red** lines?
  - Yes** - [Continue with item 2.]
  - No** - [Determine who the tract operators are inside the segment. Thank respondent and conclude interview.]
  
2. What were the boundaries of land operated inside these **red** lines?  
[Verify or draw tract boundaries in blue, then continue with item 3.]
  
3. Was any land inside these **red** lines administered or controlled by a public agency, industrial corporation, or grazing association for use on a fee per head or animal unit month (AUM) basis?
  - Yes** - [Correct boundaries and assign a separate tract code to the PIGA land, then go to page 2.]
  - No** - [Go to page 2.]



# Screening Form





# Screening Form



In Column 5, be sure that the letter agrees with the letter you assigned to the tract on the aerial photo.

5	6	7	8	9	10	11
TRACT LETTER	Line 1 – Full Name (First, Middle, Last) Line 2 – Mailing Address Line 3 – City, State, ZIP Code Line 4 – Telephone Number	Is this tract Public, Industrial, or Grazing Association land used on an AUM basis?	On the total acres operated on June 1, have there been or will there be any crops grown, hay cut, livestock, poultry, honey bees or aquaculture raised this year?	On the total acres operated on June 1, have you sold or will you sell agricultural products or receive government payments this year?	On the total acres operated on June 1, are any crops now in storage or will there be any crops stored before June 1, [year]?	Has this operation owned or raised any hogs or pigs in the past 12 months, or does it expect to own or raise any this year?
A	Name: <u>Ag Super Farms - Ima Farmer</u> Address: <u>100 FM 20</u> <u>Agtown, US 54321</u> Phone: <u>(555) 555-5717</u>	<input type="checkbox"/> Yes – Enter acres in col.21 and conclude interview. <input checked="" type="checkbox"/> No	<input checked="" type="checkbox"/> Yes – Go to Questionnaire <input type="checkbox"/> DK – Go to Questionnaire <input type="checkbox"/> No	<input type="checkbox"/> Yes – Go to Questionnaire <input type="checkbox"/> DK – Go to Questionnaire <input type="checkbox"/> No	<input type="checkbox"/> Yes – Go to Questionnaire <input type="checkbox"/> DK – Go to Questionnaire <input type="checkbox"/> No	<input type="checkbox"/> Yes – Go to Questionnaire <input type="checkbox"/> DK – Go to Questionnaire <input type="checkbox"/> No
B	Name: <u>Bill Rancher</u> Address: <u>2 Happy Rd</u> <u>Agtown, US 54321</u> Phone: <u>(555) 555-7444</u>	<input type="checkbox"/> Yes – Enter acres in col.21 and conclude interview. <input checked="" type="checkbox"/> No	<input type="checkbox"/> Yes – Go to Questionnaire <input type="checkbox"/> DK – Go to Questionnaire <input checked="" type="checkbox"/> No	<input type="checkbox"/> Yes – Go to Questionnaire <input type="checkbox"/> DK – Go to Questionnaire <input checked="" type="checkbox"/> No	<input type="checkbox"/> Yes – Go to Questionnaire <input type="checkbox"/> DK – Go to Questionnaire <input checked="" type="checkbox"/> No	<input type="checkbox"/> Yes – Go to Questionnaire <input type="checkbox"/> DK – Go to Questionnaire <input checked="" type="checkbox"/> No



# Screening Form



In Column 6, record or verify the full name and complete mailing address and phone number. Include "Non-Ag" in the operation name as needed.

5	6	7	8	9	10	11
TRACT T T E R	Line 1 – Full Name (First, Middle, Last) Line 2 – Mailing Address Line 3 – City, State, ZIP Code Line 4 – Telephone Number	Is this tract Public, Industrial, or Grazing Association land used on an AUM basis?	On the total acres operated on June 1, have there been or will there be any crops grown, hay cut, livestock, poultry, honey bees or aquaculture raised this year?	On the total acres operated on June 1, have you sold or will you sell agricultural products or receive government payments this year?	On the total acres operated on June 1, are any crops now in storage or will there be any crops stored before June 1, [year]?	Has this operation owned or raised any hogs or pigs in the past 12 months, or does it expect to own or raise any this year?
A	Name: Ag Super Farms - Ima Farmer Address: 100 FM 20 Agtown, US 54321 Phone: (555) 555-5717	<input type="checkbox"/> Yes – Enter acres in col.21 and conclude interview. <input checked="" type="checkbox"/> No	<input checked="" type="checkbox"/> Yes – Go to Questionnaire <input type="checkbox"/> DK – Go to Questionnaire <input type="checkbox"/> No	<input type="checkbox"/> Yes – Go to Questionnaire <input type="checkbox"/> DK – Go to Questionnaire <input type="checkbox"/> No	<input type="checkbox"/> Yes – Go to Questionnaire <input type="checkbox"/> DK – Go to Questionnaire <input type="checkbox"/> No	<input type="checkbox"/> Yes – Go to Questionnaire <input type="checkbox"/> DK – Go to Questionnaire <input type="checkbox"/> No
B	Name: Bill Rancher Non-Ag Address: 2 Happy Rd Agtown, US 54321 Phone: (555) 555-7444	<input type="checkbox"/> Yes – Enter acres in col.21 and conclude interview. <input checked="" type="checkbox"/> No	<input type="checkbox"/> Yes – Go to Questionnaire <input checked="" type="checkbox"/> DK – Go to Questionnaire <input type="checkbox"/> No	<input type="checkbox"/> Yes – Go to Questionnaire <input checked="" type="checkbox"/> DK – Go to Questionnaire <input type="checkbox"/> No	<input type="checkbox"/> Yes – Go to Questionnaire <input checked="" type="checkbox"/> DK – Go to Questionnaire <input type="checkbox"/> No	<input type="checkbox"/> Yes – Go to Questionnaire <input checked="" type="checkbox"/> DK – Go to Questionnaire <input type="checkbox"/> No



# Screening Form

Ask questions starting in Column 8. On the first 'Yes' or 'DK', fill out a tract questionnaire. If you get a 'No', keep going.

5	6	7	8	9	10	11
TRACT A B	Line 1 – Full Name (First, Middle, Last) Line 2 – Mailing Address Line 3 – City, State, ZIP Code Line 4 – Telephone Number	<i>Is this tract Public, Industrial, or Grazing Association land used on an AUM basis?</i>	On the total acres operated on June 1, have there been or will there be any crops grown, hay cut, livestock, poultry, honey bees or aquaculture raised this year?	On the total acres operated on June 1, have you sold or will you sell agricultural products or receive government payments this year?	On the total acres operated on June 1, are any crops now in storage or will there be any crops stored before June 1, [year]?	Has this operation owned or raised any hogs or pigs in the past 12 months, or does it expect to own or raise any this year?
	Name: <u>Ag Super Farms - Ima Farmer</u>	<input type="checkbox"/> Yes – Enter acres in col. 21 and conclude interview.	<input checked="" type="checkbox"/> Yes – Go to Questionnaire	<input type="checkbox"/> Yes – Go to Questionnaire	<input type="checkbox"/> Yes – Go to Questionnaire	<input type="checkbox"/> Yes – Go to Questionnaire
	Address: <u>100 FM 20</u> <u>Agtown, US 54321</u>	<input checked="" type="checkbox"/> No	<input type="checkbox"/> DK – Go to Questionnaire	<input type="checkbox"/> DK – Go to Questionnaire	<input type="checkbox"/> DK – Go to Questionnaire	<input type="checkbox"/> DK – Go to Questionnaire
Phone: <u>(555) 555-5717</u>						
Name: <u>Bill Rancher Non-Ag</u>	<input type="checkbox"/> Yes – Enter acres in col. 21 and conclude interview.	<input type="checkbox"/> Yes – Go to Questionnaire	<input type="checkbox"/> Yes – Go to Questionnaire	<input type="checkbox"/> Yes – Go to Questionnaire	<input type="checkbox"/> Yes – Go to Questionnaire	<input type="checkbox"/> Yes – Go to Questionnaire
Address: <u>2 Happy Rd</u> <u>Agtown, US 54321</u>	<input checked="" type="checkbox"/> No	<input type="checkbox"/> DK – Go to Questionnaire	<input type="checkbox"/> DK – Go to Questionnaire	<input type="checkbox"/> DK – Go to Questionnaire	<input type="checkbox"/> DK – Go to Questionnaire	<input type="checkbox"/> DK – Go to Questionnaire
Phone: <u>(555) 555-7444</u>						



# Screening Form



Column 18:  
Record the acres  
in the Non-Ag  
Tract.

Column 20:  
Potential for ag  
before next year?

Column 20a:  
Code that  
corresponds to  
type of non-  
agricultural land

A

B

13	14	15	16	17	18	20	20a	21
On June 1, were there any horses, ponies, or other equine, regardless of ownership, on the total acres operated?	<b>Excluding home use,</b> have there been or will there be any vegetables, melons, fruit, nuts or berries grown on this operation this year?	<b>Excluding home use,</b> have there been or will there be any nursery, greenhouse, floriculture, sod, cut Christmas trees or other woody crops grown on this operation this year?	On June 1, did this operation have any idle cropland or more than 99 acres of pasture?	<b>OFFICE USE</b>	<b>NON-AGRICULTURAL TRACTS</b>			<b>PIGA</b>
<input type="checkbox"/> Yes – Go to Questionnaire <input type="checkbox"/> DK – Go to Questionnaire <input type="checkbox"/> No	<input type="checkbox"/> Yes – Go to Questionnaire <input type="checkbox"/> DK – Go to Questionnaire <input type="checkbox"/> No	<input type="checkbox"/> Yes – Go to Questionnaire <input type="checkbox"/> DK – Go to Questionnaire <input type="checkbox"/> No	<input type="checkbox"/> Yes – Go to Questionnaire <input type="checkbox"/> DK – Go to Questionnaire <input type="checkbox"/> No		How many acres are inside these red lines?  Enter acres and land use, then continue	Does this tract have potential for agriculture before June 1, [year]?  Enter code	What best describes this non-agricultural tract?  Enter code	Acres of Public, Industrial, or Grazing Association land used on AUM basis.  Enter acres
<input type="checkbox"/> Yes – Go to Questionnaire <input type="checkbox"/> DK – Go to Questionnaire <input type="checkbox"/> No	<input type="checkbox"/> Yes – Go to Questionnaire <input type="checkbox"/> DK – Go to Questionnaire <input type="checkbox"/> No	<input type="checkbox"/> Yes – Go to Questionnaire <input type="checkbox"/> DK – Go to Questionnaire <input type="checkbox"/> No	<input type="checkbox"/> Yes – Go to Questionnaire <input type="checkbox"/> DK – Go to Questionnaire <input type="checkbox"/> No	— — <b>00</b>	846 .  LAND USE	818  <input type="checkbox"/> YES = 1 <input type="checkbox"/> DK = 2 <input type="checkbox"/> NO = 3	783	849  .
<input type="checkbox"/> Yes – Go to Questionnaire <input type="checkbox"/> DK – Go to Questionnaire <input checked="" type="checkbox"/> No	<input type="checkbox"/> Yes – Go to Questionnaire <input type="checkbox"/> DK – Go to Questionnaire <input checked="" type="checkbox"/> No	<input type="checkbox"/> Yes – Go to Questionnaire <input type="checkbox"/> DK – Go to Questionnaire <input checked="" type="checkbox"/> No	<input type="checkbox"/> Yes – Go to Questionnaire <input type="checkbox"/> DK – Go to Questionnaire <input checked="" type="checkbox"/> No	— — <b>00</b>	846 <b>2.5</b> <i>Residential</i>  LAND USE	818 <b>3</b>  <input type="checkbox"/> YES = 1 <input checked="" type="checkbox"/> DK = 2 <input type="checkbox"/> NO = 3	783 <b>1</b>	849  .



# Screening Form



Codes to be used in Column 20a are:
(1) Residential
(2) Woods
(3) Idle Open Land
(4) Pasture
(5) Water
(6) Reported Non-Ag by Respondent
(7) Vacant Houses
(8) Obvious Non-Ag
(9) Grassland
(10) Hunting Preserve or Private Land Managed for Wildlife
(11) Government Land
(12) Other

Please include clarifying comments if you choose option 8 or 12, or if there is potential for agriculture in the next 12 months.





# Screening Form

If Column 7 is 'Yes', enter the number of acres in Column 21 and conclude the interview.

13	14	15	16	17	18	20	20a	21
On June 1, were there any horses, ponies, or other equine, regardless of ownership, on the total acres operated?	<b>Excluding home use,</b> have there been or will there be any vegetables, melons, fruit, nuts or berries grown on this operation this year?	<b>Excluding home use,</b> have there been or will there be any nursery, greenhouse, floriculture, sod, cut Christmas trees or other woody crops grown on this operation this year?	On June 1, did this operation have any idle cropland or more than 99 acres of pasture?	<b>O F F I C E</b>	<b>NON-AGRICULTURAL TRACTS</b>			<b>PIGA</b>
					How many acres are inside these red lines?  Enter acres and land use, then continue	Does this tract have potential for agriculture before June 1, [year]?  Enter code	What best describes this non-agricultural tract?  Enter code	Acres of Public, Industrial, or Grazing Association land used on AUM basis.  Enter acres
<input type="checkbox"/> <b>Yes</b> – Go to Questionnaire <input type="checkbox"/> <b>DK</b> – Go to Questionnaire <input type="checkbox"/> <b>No</b>	<input type="checkbox"/> <b>Yes</b> – Go to Questionnaire <input type="checkbox"/> <b>DK</b> – Go to Questionnaire <input type="checkbox"/> <b>No</b>	<input type="checkbox"/> <b>Yes</b> – Go to Questionnaire <input type="checkbox"/> <b>DK</b> – Go to Questionnaire <input type="checkbox"/> <b>No</b>	<input type="checkbox"/> <b>Yes</b> – Go to Questionnaire <input type="checkbox"/> <b>DK</b> – Go to Questionnaire <input type="checkbox"/> <b>No</b>	— <b>00</b>	846  LAND USE	818  <input type="checkbox"/> <b>YES</b> = 1 <input type="checkbox"/> <b>DK</b> = 2 <input type="checkbox"/> <b>NO</b> = 3	783	849  <b>250.0</b>
<input type="checkbox"/> <b>Yes</b> – Go to Questionnaire <input type="checkbox"/> <b>DK</b> – Go to Questionnaire <input type="checkbox"/> <b>No</b>	<input type="checkbox"/> <b>Yes</b> – Go to Questionnaire <input type="checkbox"/> <b>DK</b> – Go to Questionnaire <input type="checkbox"/> <b>No</b>	<input type="checkbox"/> <b>Yes</b> – Go to Questionnaire <input type="checkbox"/> <b>DK</b> – Go to Questionnaire <input type="checkbox"/> <b>No</b>	<input type="checkbox"/> <b>Yes</b> – Go to Questionnaire <input type="checkbox"/> <b>DK</b> – Go to Questionnaire <input type="checkbox"/> <b>No</b>	— <b>00</b>	846 <b>2.5</b>  LAND USE <b>Op's residence</b> <b>No Ag</b>	818 <b>3</b>  <input type="checkbox"/> <b>YES</b> = 1 <input type="checkbox"/> <b>DK</b> = 2 <input checked="" type="checkbox"/> <b>NO</b> = 3	783 <b>6</b>	849  .

A

B





# Screening Form



- A tract will be an agricultural tract if anywhere on the total acres operated, the operation:
  - Produces or raises an agricultural commodity
  - Stores crops
  - Produces and Sells agricultural products
  - Receives government payments (CRP, WRP, etc.)
  - Owns or Raises livestock
  - Meets another criteria of a farm
- A tract will be a non-ag tract if it meets none of the criteria above.
- When in doubt? Fill it out.



# Screening Form



## Special Notes About Non-Ag Tracts:

- In the Operation Name, record what the tract is
  - church, woods, roads etc.
- Record a contact name and full street address if possible
  - This is **NECESSARY** for any Non-Ag Tracts with potential for Ag in the next year.
  - For residential neighborhoods with no ag, one contact name is sufficient to represent a groups of houses IF it follows the ½ acre rule.

# Screening Form

## Special Notes About Non-Ag Tracts:

- In Column 20, seriously consider “potential for ag”
  - Could a crop be seeded without having to improve or clear the land?
  - Is there a greenhouse or grain storage bin on the property?
  - Is there a fenced pasture, barn, pen, hog building, chicken house, or any other sign of potential for livestock?



# Screening Form

## Special Notes About Non-Ag Tracts:

- In Column 20, seriously consider “potential for ag”
  - Ask Respondent if they intend to have agriculture in the next year.
  - If no Respondent is available, use your best judgment based on observation.
  - Non-Ag Tracts coded to have a potential for agriculture WILL be sampled for all follow-on surveys.





# Screening Form



## Other Potential Screening Problems:

- Federal Public Land (Forest Service)
- Non-Federal Public Land
- Industrial Land
- Institutional Farms
- Ag Business
- Equine Operations
- Land used “rent free” by someone other than the tract operator
- Out-of-state operations
- Operator with land in more than one segment
- Landlord rents out cropland, but keeps control of other facilities
- Two or more renters of the same parcel
- **(Consult Chapter 5 of the Interviewer Manual for more information)**



# Screening Form



## Other Potential Screening Problems:

- Two or more aerial photos for a segment
- Boundaries of segment not identifiable
- Boundaries of segment on aerial photo and county map do not agree
- Aerial photos not provided for a segment
- Segment boundaries extend into a neighboring state/county
- Segment boundary cuts through a field
- More than 20 ag tracts in one segment
- Incorrect Digitized Acres



# Screening Form – Back Page



[Complete these items when enumeration of segment is completed.]

1. Total tract letters listed in **Column 5, page 2 (sum of all Screening Forms for this segment)**.....

2. Number of **tract letters** listed **on photo** or map.....

(Item 1 must equal item 2.)

---

3. Number of **Area Version** questionnaires completed.....

4. Number of tracts with acreage listed in **Column 18, page 3**..... +

5. Number of tracts with acreage listed in **Column 21, page 3**..... +

6. Total of items 3 + 4 + 5..... =

(Item 6 must equal items 1 and 2.)



# Screening Form – Back Page



### Worksheet

Ag Tract Acres		Non-Ag Tract Acres		PIGA Tract Acres
<b>A=302.0</b>	<b>E=52.0</b>	<b>B=5.0</b>		
<b>C=141.0</b>		<b>G=2.5</b>		
<b>D=100.5</b>	<b>595.5</b>	<b>H=6.1</b>	<b>13.6</b>	<b>0</b>

$$609.1/600 \times 100 = \mathbf{101.5\%}$$

ENUMERATOR: \_\_\_\_\_

DATE: \_\_\_\_\_

Reported Acres (RA)	OFFICE USE Digitized Acres	RA / DA
<b>609.1</b>	<b>600</b>	<b>101.5%</b>





# Screening Form – Back Page

[Comment on any enumerating problems caused by segment boundaries, split fields, aerial photo coverage, etc.]

- Please add comments if you encounter something noteworthy such as problems with enumeration
- Write the number of hours required to complete a segment containing a large number of Ag tracts

---

---

---

---

---

---

---

---

---

---

---

---



# Reminders



- Account for all land inside segment boundaries
- Get complete and accurate names and addresses of tract operators for Ag, Non-Ag, and PIGA Tracts
- Verify the number of tracts and acreages on the back page of the Screening Form
- Leave good comments
- Verify all numbers and tracts balance out



---

Thank you!

# Face page, Sections A and C

[Click here to  
return to the  
List of Topics](#)



**Bedriena Uka**  
**Heartland Region**



United States Department of Agriculture  
National Agricultural Statistics Service



# Face Page – Tract Label



42 000170999 07 00 002761 0000197423 0  
SEQ042-00596

42 2062 170999 07  
STR

42100199990

TRACT G  
ACRE 35.5  
OPDOM 00 80 133  
(717) 999-9998 C

(717) 999-9999  
CLICHÉ FARM NAME  
PAUL L SMITH  
~~23 RURAL DR~~  
PITTS GROVE NJ 08318-

32 RURAL DR

LID 42 917995500

Previously  
Reported Acres



**\*These are fake addresses**



# Face Page - Verification

1. I need to make sure we have your (the operator's) correct name, mailing address and phone number.

[VERIFY LABEL IF PRESENT]

Name of  
Farm, Ranch,  
or Operation: \_\_\_\_\_

Name of Operator: \_\_\_\_\_  
(First) (Middle) (Last)

Mailing Address: \_\_\_\_\_  
(Route or Street)

\_\_\_\_\_  
(City)

(State)

(ZIP Code)



# Face Page – Wrong Target

## DELETE TRACT



42 000170999 07 00 002761 000019742:  
SEQ042-00596

42 2062 140999 07  
STR 42100199990

(717) 999-9999  
CLICHÉ FARM NAME

~~PAUL L SMITH~~

23 RURAL DR  
PITTS GROVE NJ 08318-

### Screener Question

1. On June 1, did you operate land inside these red lines?

Yes

No

Wrong Target?

Status	↑↓	C
Status - Pending		
No Longer in Segment		



United States Department of Agriculture  
National Agricultural Statistics Service



# Section A – Question 1

## SECTION A - OPERATION DESCRIPTION

1. On June 1, were the day-to-day decisions for this tract of land made by an individual operator, by partners, or by a hired manager? [Check one]

- Individual - [Enter 1]
- Partners - [Enter number of partners, including operator.]
- A hired manager - [Enter 8]

Code

9921
------

[If code is 1 or 8, go to Item 4.]

[Landlord - tenant arrangements are not considered partnerships. If tract is operated by partners, continue.]





# Section A (continued)

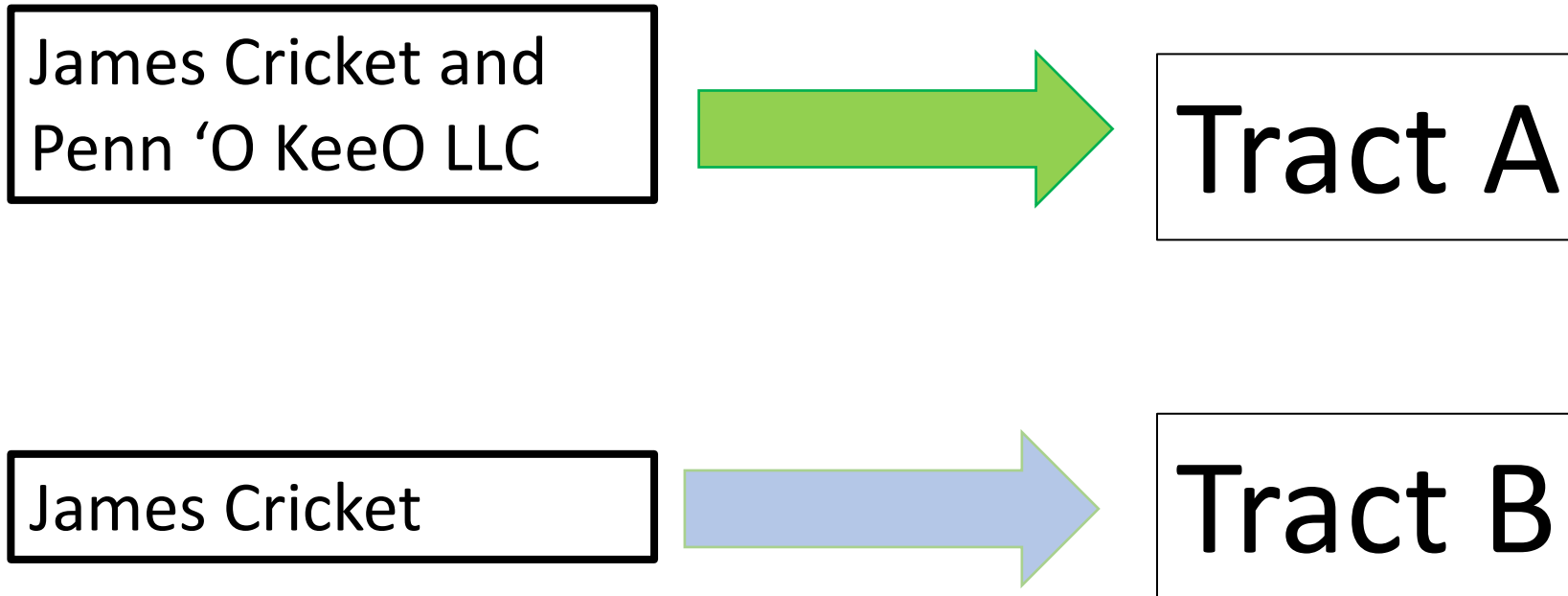
## More Than One Operating Arrangement?

**If target states having multiple operating arrangements within the segment:**

- Assign additional tract letter.
- Determine whether it qualifies for a tract questionnaire
- If qualifying, complete a tract questionnaire for it.



# Operating Arrangement Example



# Section A - Partners

## FOR PARTNERS:

- Do they share equally in decisions?
- List out the names and contact information of each.
- CAPI will mimic this...

2. Do the partners share equally in day-to-day decisions?

- Yes - (Consider the oldest partner the operator.)
- No - (The partner who makes most of the day-to-day decisions is the operator.)

[Operator shown on Face Page must be the partner making the most day-to-day decisions, or the oldest partner. Make corrections if necessary.]

3. Now I need to identify by name, mailing address and phone number for the other partner(s) in this operation. [Verify partners' names and make necessary corrections if names have already been entered.]

Name _____				
	(First)	(Middle)	(Last)	
Mailing Address _____				
	(Route or Street)			( )
(City)	(State)	(ZIP Code)	(Phone)	check if cell phone <input type="checkbox"/>

OFFICE USE	
STATE	POID
9973	9972
_____	_____ - _____ - _____

Name _____				
	(First)	(Middle)	(Last)	
Mailing Address _____				
	(Route or Street)			( )
(City)	(State)	(ZIP Code)	(Phone)	check if cell phone <input type="checkbox"/>

OFFICE USE	
STATE	POID
_____	_____ - _____ - _____



# Section A – Partnership Exclusions

## THESE ARE NOT PARTNERS

Family members (including spouse) **should not be listed** if they do not participate in the **day-to-day decisions** of the operation.

Landlord-tenant, cash rent, share cropping and managed land **should be excluded.**

2. Do the partners share equally in day-to-day decisions?

Yes - (Consider the oldest partner the operator.)  
 No - (The partner who makes most of the day-to-day decisions is the operator.)

[Operator shown on Face Page must be the partner making the most day-to-day decisions, or the oldest partner. Make corrections if necessary.]

3. Now I need to identify by name, mailing address and phone number for the other partner(s) in this operation.  
 [Verify partners' names and make necessary corrections if names have already been entered.]

Name _____			
(First)	(Middle)	(Last)	
Mailing Address _____			
(Route or Street)			
_____ (_____) _____			
(City)	(State)	(ZIP Code)	(Phone) <input type="checkbox"/> check if cell phone

OFFICE USE	
STATE	POID
9973	9972
_____	_____

Name _____			
(First)	(Middle)	(Last)	
Mailing Address _____			
(Route or Street)			
_____ (_____) _____			

OFFICE USE	
STATE	POID
_____	_____



# Section C – First Questions

## SECTION C - SECTIONS TO BE COMPLETED

1. [Are BOTH CROPS - STOCKS and CATTLE boxes at bottom of page checked?]  
 Yes - [Go to Section D.]  
 No
2. [Is this a new segment or previously unknown tract operator?]  
 Yes - [Check CROPS - STOCKS and CATTLE boxes at bottom of page, then go to Section D.]  
 No
3. [Was this tract nonagricultural last year?]  
 Yes - [Check CROPS - STOCKS and CATTLE boxes at bottom of page, then go to Section D.]  
 No



# Section C – Questions 4 & 5

ANY changes to the face page or changes to the names of the partners recorded in Section A will require the boxes to be checked.

4. [Have you changed or corrected the operation name, operator's name, or address on Face Page?]

Yes - [Check CROPS - STOCKS and CATTLE boxes at bottom of page, then go to Section D.]

No

5. [Have you changed, corrected, or deleted any partners' names or addresses in Section A, page 2?]

Yes - [Check CROPS - STOCKS and CATTLE boxes at bottom of page, then go to Section D.]

No - [Go to Section D.]



# Section C – Are Boxes Checked?

Crops - Stocks and Cattle boxes

\*Some of these will be checked\*



<b>CROPS - STOCKS</b>
✓

<b>CATTLE</b>
✓



# Section C – Are Boxes Checked?

**ULTIMATELY, YOU END UP ON SECTION D EITHER WAY.**

- All 5 questions may be “No” and it would finally tell you to [Go to Section D].
- Answer all questions until you check one that says go to Section D.

## SECTION C - SECTIONS TO BE COMPLETED

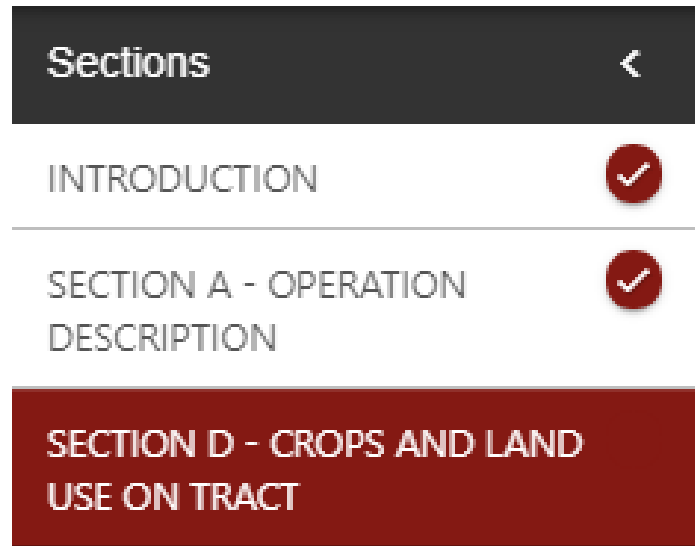
1. [Are BOTH CROPS - STOCKS and CATTLE boxes at bottom of page checked?]  
 Yes - [Go to Section D.]  
 No
2. [Is this a new segment or previously unknown tract operator?]  
 Yes - [Check CROPS - STOCKS and CATTLE boxes at bottom of page, then go to Section D.]  
 No
3. [Was this tract nonagricultural last year?]  
 Yes - [Check CROPS - STOCKS and CATTLE boxes at bottom of page, then go to Section D.]  
 No
4. [Have you changed or corrected the operation name, operator's name, or address on Face Page?]  
 Yes - [Check CROPS - STOCKS and CATTLE boxes at bottom of page, then go to Section D.]  
 No
5. [Have you changed, corrected, or deleted any partners' names or addresses in Section A, page 2?]  
 Yes - [Check CROPS - STOCKS and CATTLE boxes at bottom of page, then go to Section D.]  
 No - [Go to Section D.]





# Section C – CAPI

## Section C is Invisible in CAPI



– It's all behind the scenes...



# Final Reminders

- Follow the enumerator instructions very carefully.
- Must do a questionnaire for each tract operator who qualifies as a possible farm operator.
- Section C is essential as it determines if additional questions for the entire operation are required.
- Leave comments
- Enter everything into CAPI

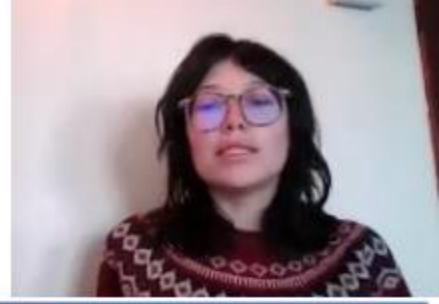


# Thank you!



**United States Department of Agriculture**  
National Agricultural Statistics Service





[Click here to return to the List of Topics](#)

## Section D - Crops and Land Use on Tract

### The Heart of June Area





## Section D - Crops and Land Use on Tract

### The Heart of June Area



# Section D - What's it for?

- Section D collects detailed information on ALL ACREAGE inside the **BLUE TRACT** boundaries!
  - Not just tillable or cropland acres.
  - Be sure to account for all of the cropland, woods, farmsteads, pasture and waste.
- Extra time reviewing the parcel maps with the respondent while screening for agriculture means a more accurate job interviewing and less time spent completing the questionnaire.



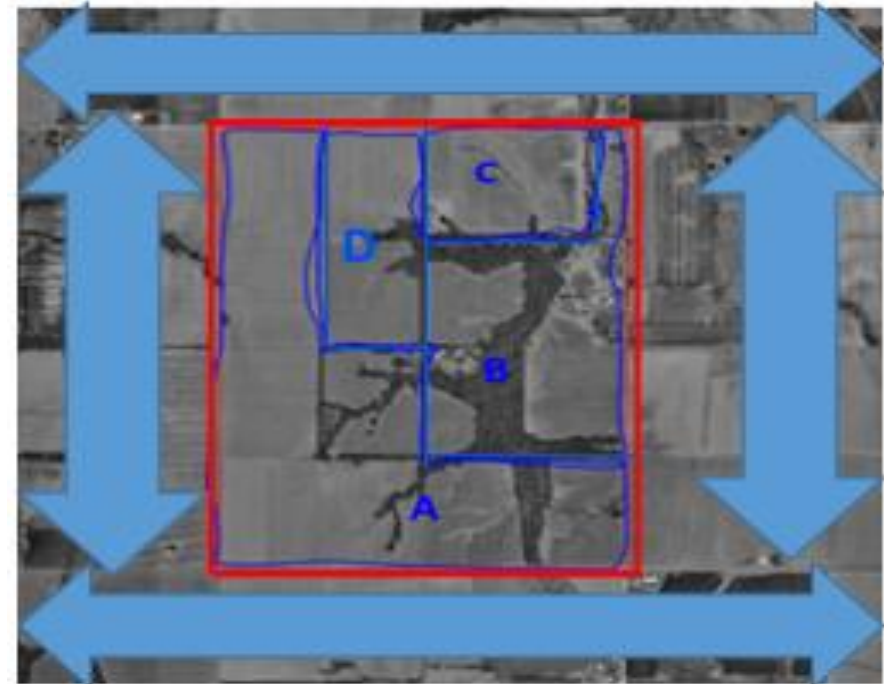
# Section D – Crops and Land use on Tract

1. The map and photo has a red boundary drawn on it. How many acres did you operate inside that red boundary on June 1?

Acres
840
.

The next questions will ask about the land use for the acres that you operate inside the red boundary on June 1. **Do not include land you operate that is OUTSIDE the red boundary.**

**It is very important that you do not include any acres beyond the red boundaries of the segment. This is critical for this section! Confirm with tract operator once more before you conclude the survey interview.**





# Section D – Format Change



## SECTION D - CROPS AND LAND USE ON TRACT

1. The map and photo has a red boundary drawn on it. How many acres did you operate inside that red boundary on June 1?

Acres
840
.

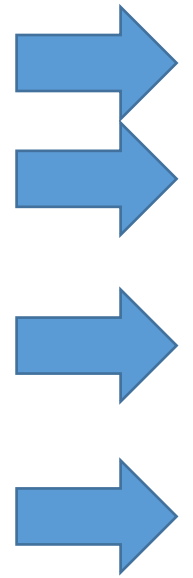
The next questions will ask about the land use for the acres that you operate inside the red boundary on June 1. Do not include land you operate that is OUTSIDE the red boundary.

Land Use	Acres	
2. Occupied farmstead or dwelling	843 .	
3. Waste, unoccupied dwellings, buildings and structures, roads, ditches, etc.	841 .	
4. Woodland	Not Pastured -----	831 .
	Pastured	832 .
5. Pasture	Permanent (not in crop rotation) -----	842 .
	Cropland (used only for pasture)	856 .
6. Land in summer fallow	847 .	
7. Idle cropland - idle all during 2021	857 .	

No longer need field level data!!



# Section D - Land Use



	Land Use	Acres
2.	Occupied farmstead or dwelling	843 .
3.	Waste, unoccupied dwellings, buildings and structures, roads, ditches, etc.	841 .
4.	Woodland	831 .
	Not Pastured	-----
5.	Pasture	832 .
	Pastured	-----
5.	Pasture	842 .
	Permanent (not in crop rotation)	-----
	Cropland (used only for pasture)	856 .

- Line 5 – Pasture
  - Permanent/Cropland (in crop rotation?)
  - \*\*\*Dashed line...cropland divider\*\*\*

# Idle Land

6. Land in summer fallow	847	.
7. Idle cropland - idle all during (year) <b>CRP goes here</b>	857	.

- What are you recording here?



## Section D - Grains

- Line numbers and crops will vary by state...the pattern
  - Planted and to be planted for all purposes
  - Left to be Planted
  - Harvested for GRAIN or seed
  - Other uses of the grain
- Include small grain acres planted last fall or this spring even if crop was abandoned
- If it's DRY GRAIN HAY, it goes in "Small Grain Hay"
  - Line will differ based on state version.



# NON-grain Crops

- Line numbers and crops will vary by state
  - Soybeans – double cropped acres line
  - Cotton- Upland and American Pima
  - Potatoes...Reds/Whites/Yellow/Russet
  - Sunflower- For Oil and Non-Oil Varieties
  - Dry Edible Beans
  - Dry Edible Peas (Not green peas)
  - Hay: Alfalfa, Small Grain Hay, Other Hay





# Other Crops

... Other crops	Acres planted and to be planted or in use	848	.
-----------------	---	-----	---

ENUMERATOR INSTRUCTIONS: If needed, use the workspace below to record other crops and acres. Record acres planted and to be planted or acres in use, including from crops planted in previous years.

OTHER CROPS	ACRES
Other crop 1	.
Other crop 2	.
Other crop 3	.
Other crop 4	.
Other crop(s)	.
Include total in item code 848 box (Other Crops)	
	.

- Be specific...
  - Grass silage; haylage; fruit crops like apples; green peas; grapes; hazelnuts, almonds, vegetable crops like carrots, lettuce, tomatoes, grass seed, hops, Christmas trees, etc.
  - Can list more than one, but account for all “Other crop” acres in item code 848 box.

# Review & Add



- Make sure all the land in the tract is accounted for in Section D
- Add crop acreage should = Line 1 item code 840 Box, verify with operator
  - Minus double crop acres.

SECTION D - CROPS AND LAND USE ON TRACT		16			
1. The map and photo has a red boundary drawn on it. How many acres did you operate inside that red boundary on June 1?		<table border="1"> <thead> <tr> <th>Acres</th> </tr> </thead> <tbody> <tr> <td>840</td> </tr> <tr> <td>.</td> </tr> </tbody> </table>	Acres	840	.
Acres					
840					
.					
The next questions will ask about the land use for the acres that you operate inside the red boundary on June 1. Do not include land you operate that is OUTSIDE the red boundary.					
	<b>Land Use</b>	<b>Acres</b>			

# Review & Add



- CROPLAND acres IrrigatABLE – Only select states ask this question
  - Facilities and equipment
- Double Cropped acres (Line number varies by state)
  - Specifically two crops harvested from the same field during same crop year.
- Office use code 7793
  - Will be completed by you the enumerator, since data will be submitted in CAPI.

27. Enumerator Action - Was Section D Reported by the Respondent or Observed?

		Code
7793	1	<input type="checkbox"/> Reported
	2	<input type="checkbox"/> Ref/Inacc Observed



# SECTION D IMPORTANT NOTES



- Section D must be completed for every Ag Tract Questionnaire!!!
- For Refusals and Inaccessibles you will still need to draw the tracts boundaries on the aerial photo and complete Section D to the best of your ability.
  - Use your grid to determine tract acreages.
  - Use all other resource materials offered to you.
  - What did you observe when you drove around the segment?



# Example of an Area Tract



- TRACT: An area of land inside a segment under one type of land arrangement
- Outlined in **blue**
- Identify tract with a letter
- Link land with a name

# Let's look at a few tracts

- You have drawn off the **tract boundaries** for Tracts A, B, C and D in the Segment.
- You have completed Section D in the questionnaire for each of these tracts.
- Let's review now...



## SECTION D - CROPS AND LAND USE ON TRACT

16

Acres	
840	60.0

1. The map and photo has a red boundary drawn on it. How many acres did you operate inside that red boundary on June 1?

12. <b>Oats</b> (INCLUDE cover crop)	Acres planted and to be planted for all purposes	533	30.0
	Acres left to be planted for all purposes	737	.
	Acres harvested and to be harvested for grain or seed	534	.
	Other uses of oats planted (Abandoned, silage, green chop, etc)	796	30.0

13. <b>Corn</b> (EXCLUDE popcorn and sweet corn)	Acres planted and to be planted for all purposes	530	30.0
	Acres left to be planted for all purposes	611	.
	Acres to be harvested for grain or seed	531	.
	Other uses of corn planted (Abandoned, silage, green chop, etc)	789	30.0

23. <b>Hay</b>	Acres cut and to be cut for dry hay.	Alfalfa and Alfalfa Mixtures	653	.
		Small Grain Hay (EXCLUDE Straw.)	656	30.0
		Other Hay	342	.



# TRACT A (continued)



## SECTION D - CROPS AND LAND USE ON TRACT

31

1. The map and photo has a red boundary drawn on it. How many acres did you operate inside that red boundary on June 1?

Acres
840 <b>60 . 0</b>

## SECTION D - CROPS AND LAND USE ON TRACT (continued)

22. How many of the cropland acres inside the red boundary have facilities and equipment available for irrigation? (include land that may not be irrigated this year.).....

Acres
803 <b>60 . 0</b>

23. How many acres inside the red boundary were or will be planted to two different crops (including any soybeans reported in item code 602 box) or will have two uses of the same crop in the current crop year?

Acres
1844 .



# TRACT B



## SECTION D - CROPS AND LAND USE ON TRACT

1. The map and photo has a red boundary drawn on it. How many acres did you operate inside that red boundary on June 1?

Acres
840
<b>40.0</b>

10. **Spring Wheat** Other than Durum (INCLUDE cover crop)

Acres planted and to be planted for all purposes	550	<b>40.0</b>
Acres left to be planted for all purposes	613	.
Acres harvested and to be harvested for grain or seed	768	<b>30.0</b>
Other uses of spring wheat planted (Abandoned, silage, green chop, etc)	921	<b>10.0</b>



# TRACT C



## SECTION D - CROPS AND LAND USE ON TRACT

1. The map and photo has a red boundary drawn on it. How many acres did you operate inside that red boundary on June 1?

	<b>Acres</b>
840	<b>28.0</b>

The next questions will ask about the land use for the acres that you operate inside the red boundary on June 1. Do not include land you operate that is OUTSIDE the red boundary.

Land Use	Acres
2. Occupied farmstead or dwelling	843 <b>3.0</b>
3. Waste, unoccupied dwellings, buildings and structures, roads, ditches, etc.	841 .
4. Woodland	831 <b>14.5</b>
	832 .
5. Pasture	842 <b>10.5</b>
	856 .
6. Land in summer fallow	847 .
7. Idle cropland - idle all during (year)	857 .



# TRACT D



1. The map and photo has a red boundary drawn on it. How many acres did you operate inside that red boundary on June 1?	Acres
	840 <b>30.0</b>

24. Other crops	Acres planted and to be planted or in use	848 <b>30.0</b>
-----------------	---	-----------------

ENUMERATOR INSTRUCTIONS: If needed, use the workspace below to record other crops and acres. Record acres planted and to be planted or acres in use, including from crops planted in previous years.

OTHER CROPS	ACRES
Other crop 1 <b>Apples</b>	<b>10.0</b>
Other crop 2 <b>Cherries</b>	<b>10.0</b>
Other crop 3 <b>Hazelnuts</b>	<b>10.0</b>
Other crop 4	.
Other crop(s)	.
Include total in item code 848 box (Other Crops)	<b>30.0</b>

## SECTION D - CROPS AND LAND USE ON TRACT (continued)

25. How many of the cropland acres inside the red boundary have facilities and equipment available for irrigation? (include land that may not be irrigated this year.).....	Acres
	803 <b>30.0</b>



# This Concludes Section D







[Click here to  
return to the  
List of Topics](#)

## Sections E and F



**Katie Kallenbach**  
Upper Midwest Regional Office

# Section E

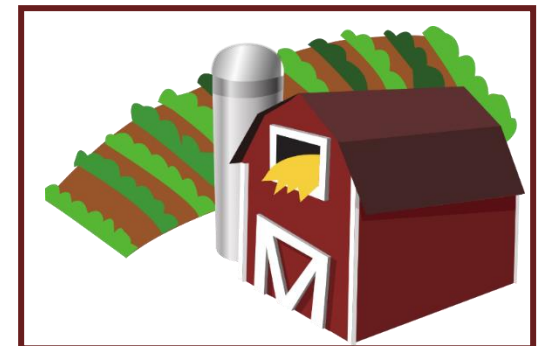
## Total Acres Operated and Land Use



# Section E

## Purpose

- Determine total land in the operation
- Provide data for state level estimates of Land in Farms and Number of Farms
- For select operations, specific crop acres and intentions are used to select samples for future surveys.





# Section E: Items 1-3

## Total Acres Operated



1. Now I would like to ask about the **total acres operated** under this land arrangement. Include the farmstead, all cropland, woodland, pastureland, wasteland, and government program land.

2. On June 1, how many acres did this operation:

a. Own?.....

b. Rent or Lease from Others, or use Rent Free? (Exclude Federal, State and other types of land rented or leased on an AUM basis, BLM and Forest Service.).....

c. Rent or Lease to Others?.....

3. [Calculate item 2a + 2b - 2c]

Then the total acres operated on June 1 was.....

a. Does this include the farmstead, all cropland, woodland, pastureland, wasteland, and government program land?

Yes - [Continue.]

No - [Make corrections, then continue.]

Acres	
901	.
902	.
905	.
900	.



# Section E: Items 4-5 Livestock Grazing



4. On June 1, (*Year*), did this operation pay on a per-head or animal unit month (AUM) basis for livestock to graze on any land (private, Federal, State, Indian Reservation, etc.)?

Yes - [Enter code 1 and continue.]     No - [Enter code 3, then go to item 6.].....

Code

906

5. How many acres did this operation use on a fee-per-head or animal unit month (AUM) basis? (INCLUDE private, Federal, State, railroad, Public School District or Indian Reservation land.).....

Acres

904 .

- Acres in Item 5 are not reported in total acres operated (Item 3).
- Examples of completing Section E for PIGA operations are found in the Chapter 6 of the Interviewer's Manual.



# Section E: Item 6

## Acre Verification



- Compare total acres operated (Item 3, Box 900) with the total tract acres reported in Section D (Box 840).
- If reported total acres < tract acres
  - Tract acres include land not in the operation
  - Incorrect total acres operated
- If reported total acres = tract acres
  - Verify reported tract and total acres
  - Make sure to include the operator's residence
- If reported total acres > tract acres
  - Continue to Item 7



# Section E: Item 7

## Cropland



	Acres
7. Of the total acres operated, how many acres are considered cropland, including land in hay, summer fallow, idle cropland, cropland used for pasture and cropland in government programs? (Including land in the Conservation Reserve Program (CRP) and in the Wetland Reserve Program (WRP)).....	802

- Cropland acres must be greater than or equal to the sum of crops reported in Section D.
- Cropland acres cannot equal total farm acres. Need to account for operator's residence.
- Difference between total land and cropland must account for reported non-tillable acres in Section D (Waste, Woods, Pasture, etc.)



# Section E: Item 8

## CRP/WRP



8. Of the total acres operated, how many acres are in the Conservation Reserve Program (CRP) or in the Wetland Reserve Program (WRP)?.....	911
--	-----

- CRP/WRP is considered cropland. If CRP/WRP is reported, those acres must be included in total cropland.



# Section E: Item 9

## Crops - Stocks Skip



9. [Is the CROPS - STOCKS BOX checked on Page x?]

Yes - [Continue.]       No - [Go to Section G - Hogs and Pigs.]



- Refer back to the CROPS – STOCKS box in Section C.
- If the box is checked, check yes and continue with the questionnaire.
- If the box is not checked, check no and skip to Section G – Hogs and Pigs.

CROPS - STOCKS
✓

CROPS - STOCKS



# Section E: Item 10

## Fruit, Berry, Nut or Christmas Trees

10. On the total acres operated, are there any fruit trees, grape vines, tree nuts, berries (excluding strawberries), or Christmas trees?

Yes - [Continue and ask 10a.]       No - [Go to item 11.]

10 a. How many acres are in these crops?.....

Acres
689 .

- Exclude home use

# Section E: Item 11

## Small Grain Acres

11. [Were Wheat, Oats, Barley, or Rye reported in Section D, Tract Acres?]

Yes - [Enter 1 in Code Box 161, then go to item 12.] **The states that don't ask item 12 → Go to Section F**

No - 11a. On the total acres operated, was any wheat, oats, barley, or rye planted or will any be planted for any purpose for the crop year?

Yes = 1

Don't Know = 2

No = 3.....

Code

161





# Section E: Item 12

## Crops on Total Acres Operated



Some states don't ask item 12

- Alfalfa seedings during the crop year on the total acres operated

12. On the total acres operated, how many acres of new alfalfa or alfalfa mixtures have been or will be seeded during (Year)? (INCLUDE mixed with a nurse crop, other forage, or direct seedings.).....

Acres Seeded and to be Seeded
528
.

- Acres reported in Item 12 should be greater than or equal to the acres reported in Section D.

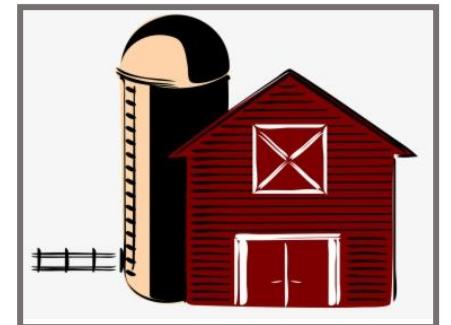
## Grains and Oilseeds in Storage on Entire Operation



# Section F

## Purpose

- Data is used to prepare estimates of the quantity of grains and oilseeds stored on farm.
- Published in the *Grain Stocks* report released at the end of June.
- This section will only be completed if the Crops - Stocks box is checked.





# Section F: Item 1

## Storage Capacity



- Report the storage capacity of all structures normally used to store whole grains or oilseeds on the total acres operated as of June 1.
- Include:
  - Permanent structures normally used to store whole grains & oilseeds
  - Structures currently in use or will likely be used in the future
- Exclude:
  - Bags, wagons, or ground piles in storage capacity
  - Licensed on farm storage facilities
  - Storage rented to others

	Capacity
1. On June 1, what was the Storage Capacity of all structures normally used to store Whole Grains or Oilseeds on the total acres operated?..... bushels	808



# Section F: Item 2

## Crops Stored on June 1



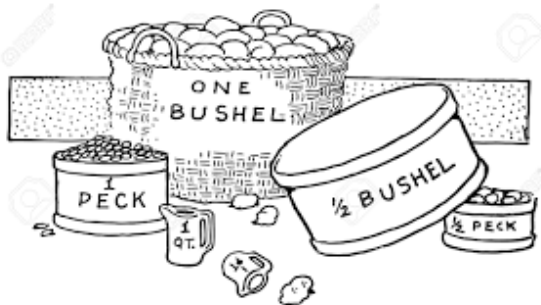
- Include grains and oilseeds for any purpose – seed, feed, sale...
- Must be whole, unprocessed grains & oilseeds – do not include flour, cracked corn, processed grains, or mixed grains
- Include crops stored on the operation including structures rented from others and grains and oilseeds in temporary storage
- Do not include grains or oilseeds stored in structures rented to someone else or stored off the acres operated



# Section F: Item 2

## Crops Stored on June 1

- Crops asked vary by state
- Each crop will have a check box for whether the crop was stored and a box for reporting how much was stored.





# Section F: Item 3

## New Crops Stored?



- Item 3 verifies that the stocks reported on hand in Item 2 do not include anything from the current year harvest.
  - If Yes, Item 2 does include new crops, remove all the current year stocks and then continue with the questionnaire.
  - If No, continue with the questionnaire.

3. Were any of the stocks on hand reported in item 2 (above) new crop from the current year harvest?

Yes - [Correct Item 2 to EXCLUDE all current year crop stocks, then continue.]

No - [Continue.]



# Section F: Item 4

## Rice Stocks



- Only on select state's questionnaires.

4. Was any rice on hand or stored on the total acres operated on June 1?

Yes - Continue.                       No - Go to Section G - Hogs and Pigs.

Please report rice on hand by length of grain on a dry weight basis.

	No	Yes	Amount on Hand June 1 Last Year and Earlier Crop Years
a. Long Grain varieties such as Lemont, New bonnet and Jackson?..	<input type="checkbox"/>	<input type="checkbox"/> How many bushels?	113
b. Medium Grain varieties such as Mars and Bengal?.....	<input type="checkbox"/>	<input type="checkbox"/> How many bushels?	114
c. Short Grain? Please list variety: _____	<input type="checkbox"/>	<input type="checkbox"/> How many bushels?	115

# Thank You!



# Section G -Hogs and Pigs

[Click here to return to the List of Topics](#)



**Peyton Mounce**  
**Upper Midwest Region**



**United States Department of Agriculture**  
National Agricultural Statistics Service



# Section G – Hogs and Pigs

1. On June 1, did this operation own or raise any hogs or pigs, regardless of location?  
(Including hogs or pigs being raised under contract for you by someone else.)

Yes - [Go to item 2.]

No - 1a. Will anyone raise hogs or pigs on this operation at any time between now and December 1, 20XX?

Yes = 1

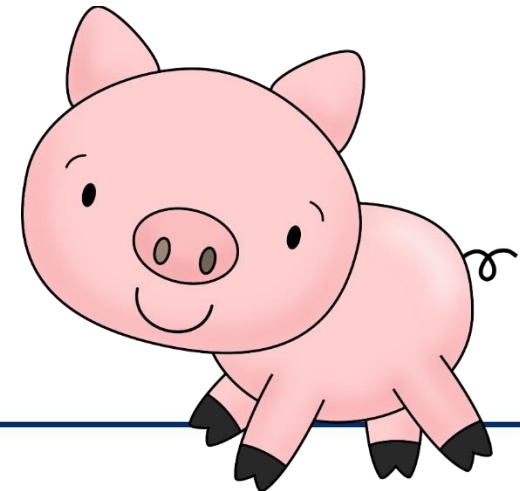
Don't Know = 2

No = 3

Enter code, then  
go to Section H.

Code

492



United States Department of Agriculture  
National Agricultural Statistics Service



# Section G – Hogs and Pigs

## Hogs on the Total Acres Operated

2. On June 1, how many hogs and pigs were on the total acres operated?

(Include sows, gilts, boars, market hogs, unweaned pigs and hogs no longer used for breeding.).....

Head

324

[If no hogs are on the total acres operated, go to item 4.]

3. Are any of the (item 2) hogs or pigs owned by someone else?

Yes - 3a. How many hogs and pigs owned by someone else were on this operation on June 1?.....

Head

322

3b. Who owns the hogs and pigs?.....

3c. Is this hog owner a contractor?

Yes

No

No - [Continue.]

(Owner Name, Address, & Phone Number)

Name \_\_\_\_\_

Address \_\_\_\_\_

City, St., Zip \_\_\_\_\_

Phone \_\_\_\_\_

OFFICE USE  
STATE FIPS

6326

OFFICE USE  
POID

327



# Section G – Hogs and Pigs

## Hogs Owned by this Operation

4. On June 1, how many hogs and pigs did this operation own regardless of location?  
(Include hogs or pigs being raised under contract for you by someone else.).....

Head

300

[If no hogs owned, go to Section H.]

5. Are any of these (item 4) hogs located on someone else's land or hog facility?

Yes - 5a. On whose land or hog facility  
are these hogs located?.....

Name \_\_\_\_\_

Address \_\_\_\_\_

City, St., Zip \_\_\_\_\_

Phone \_\_\_\_\_

No - [Continue.]

6. Have you raised hogs or pigs under any other business name during the last 12 months?

Yes - 6a. What is the other name?.....

Name \_\_\_\_\_

Address \_\_\_\_\_

City, St., Zip \_\_\_\_\_

Phone \_\_\_\_\_

No - [Continue.]

OFFICE USE

326





# Section G – Hogs and Pigs

- Independent
  - Include 4-H, home use, pet and show pigs
- Contrator
- Contractee



# Type of Hog Operation – Independent

- The operator owns and raises the hogs.
- The operator makes all decisions on raising and marketing the hogs.



# Independent Operation

1. On June 1, did this operation own or raise any hogs or pigs, regardless of location?  
(Including hogs or pigs being raised under contract for you by someone else.)

Yes - [Go to item 2.]     No - 1a. Will anyone raise hogs or pigs on this operation at any time between now and December 1, 20XX?

- Yes = 1
- Don't Know = 2
- No = 3

Enter code, then go to Section H.	Code 492
-----------------------------------	-------------

## Hogs on the Total Acres Operated

2. On June 1, how many hogs and pigs were on the total acres operated?  
(Include sows, gilts, boars, market hogs, unweaned pigs and hogs no longer used for breeding.).....

Head 324 <b>100</b>
---------------------------

[If no hogs are on the total acres operated, go to item 4.]

3. Are any of the (item 2) hogs or pigs owned by someone else?

Yes - 3a. How many hogs and pigs owned by someone else were on this operation on June 1?.....

Head 322
-------------

3b. Who owns the hogs and pigs?.....

3c. Is this hog owner a contractor?

- Yes
- No

(Owner Name, Address, & Phone Number)
Name _____
Address _____
City, St., Zip _____
Phone _____

No - [Continue.]

OFFICE USE STATE FIPS
6326

OFFICE USE POID
327



# Independent Operation

### Hogs Owned by this Operation

4. On June 1, how many hogs and pigs did this operation own regardless of location?  
(Include hogs or pigs being raised under contract for you by someone else.).....

Head
300
<b>100</b>

[If no hogs owned, go to Section H.]

5. Are any of these (item 4) hogs located on someone else's land or hog facility?

Yes - 5a. On whose land or hog facility are these hogs located?.....

Name_____
Address_____
City, St., Zip_____
Phone_____

No - [Continue.]

6. Have you raised hogs or pigs under any other business name during the last 12 months?

Yes - 6a. What is the other name?.....

Name_____
Address_____
City, St., Zip_____
Phone_____

No - [Continue.]

OFFICE USE

326
-----



# Type of Hog Operation – Contractor

- The operator owns the hogs.
- Someone else (contractee) raises the hogs.
- The operation usually provides some inputs such as feed or veterinary services but will depend on the contract.



# Contractor Operation

1. On June 1, did this operation own or raise any hogs or pigs, regardless of location?  
(Including hogs or pigs being raised under contract for you by someone else.)

Yes - [Go to item 2.]     No - 1a. Will anyone raise hogs or pigs on this operation at any time between now and December 1, 20XX?

- Yes = 1
- Don't Know = 2
- No = 3

Enter code, then go to Section H.	Code 492
-----------------------------------	-------------

## Hogs on the Total Acres Operated

2. On June 1, how many hogs and pigs were on the total acres operated?  
(Include sows, gilts, boars, market hogs, unweaned pigs and hogs no longer used for breeding.).....

Head 324 - - - -
------------------------

[If no hogs are on the total acres operated, go to item 4.]

3. Are any of the (item 2) hogs or pigs owned by someone else?

Yes - 3a. How many hogs and pigs owned by someone else were on this operation on June 1?.....

Head 322
-------------

3b. Who owns the hogs and pigs?.....

3c. Is this hog owner a contractor?

- Yes
- No

(Owner Name, Address, & Phone Number)
Name _____
Address _____
City, St., Zip _____
Phone _____

No - [Continue.]

OFFICE USE STATE FIPS
6326

OFFICE USE POID
327



# Contractor Operation

## Hogs Owned by this Operation

4. On June 1, how many hogs and pigs did this operation own regardless of location?  
(Include hogs or pigs being raised under contract for you by someone else.).....

Head
300
<b>100 000</b>

[If no hogs owned, go to Section H.]

5. Are any of these (item 4) hogs located on someone else's land or hog facility?

Yes - 5a. On whose land or hog facility  
are these hogs located?.....

Name	_____
Address	_____
City, St., Zip	_____
Phone	_____

Has 4 people raising hogs for this operation near Springfield. Each person has 25,000 hogs, did not want to take time to provide the names.

No - [Continue.]

6. Have you raised hogs or pigs under any other business name during the last 12 months?

Yes - 6a. What is the other name?.....

Name	_____
Address	_____
City, St., Zip	_____
Phone	_____

No - [Continue.]

OFFICE USE

326
-----



# Type of Hog Operation – Contractee

- Someone else (contractor) owns the hogs.
- This operation raises the hogs.
- This operation is usually paid a flat fee, by head or pig space.





# Contractee Operation

1. On June 1, did this operation own or raise any hogs or pigs, regardless of location?  
(Including hogs or pigs being raised under contract for you by someone else.)

Yes - [Go to item 2.]     No - 1a. Will anyone raise hogs or pigs on this operation at any time between now and December 1, 20XX?

- Yes = 1
- Don't Know = 2
- No = 3

Enter code, then go to Section H.	Code 492
-----------------------------------	-------------

## Hogs on the Total Acres Operated

2. On June 1, how many hogs and pigs were on the total acres operated?  
(Include sows, gilts, boars, market hogs, unweaned pigs and hogs no longer used for breeding.).....

Head 324 <b>4 000</b>
-----------------------------

[If no hogs are on the total acres operated, go to item 4.]

3. Are any of the (item 2) hogs or pigs owned by someone else?

Yes - 3a. How many hogs and pigs owned by someone else were on this operation on June 1?.....

Head 322 <b>4 000</b>
-----------------------------

3b. Who owns the hogs and pigs?.....

3c. Is this hog owner a contractor?

- Yes
- No

(Owner Name, Address, & Phone Number)	
Name	<b>Best Hogs Ever</b>
Address	<b>123 Main St</b>
City, St., Zip	<b>Anywhere, USA</b>
Phone	<b>888 777 1234</b>

No - [Continue.]

OFFICE USE STATE FIPS
6326

OFFICE USE POID
327



# Contractee Operation

## Hogs Owned by this Operation

4. On June 1, how many hogs and pigs did this operation own regardless of location?  
(Include hogs or pigs being raised under contract for you by someone else.).....

Head
300
-----

[If no hogs owned, go to Section H.]

5. Are any of these (item 4) hogs located on someone else's land or hog facility?

Yes - 5a. On whose land or hog facility  
are these hogs located?.....

Name	_____
Address	_____
City, St., Zip	_____
Phone	_____

No - [Continue.]

6. Have you raised hogs or pigs under any other business name during the last 12 months?

Yes - 6a. What is the other name?.....

Name	_____
Address	_____
City, St., Zip	_____
Phone	_____

No - [Continue.]

OFFICE USE

326
-----



# Type of Hog Operation – Independent and Contractor

- Situation:
  - The operation owns 5,000 hogs.
  - The operation raises 3,000 of those hogs (independent).
  - The operation has someone else raise 2,000 hogs (contractor).



# Independent and Contractor

1. On June 1, did this operation own or raise any hogs or pigs, regardless of location?  
(Including hogs or pigs being raised under contract for you by someone else.)

Yes - [Go to item 2.]     No - 1a. Will anyone raise hogs or pigs on this operation at any time between now and December 1, 20XX?

- Yes = 1
- Don't Know = 2
- No = 3

Enter code, then go to Section H.	Code 492
-----------------------------------	-------------

## Hogs on the Total Acres Operated

2. On June 1, how many hogs and pigs were on the total acres operated?  
(Include sows, gilts, boars, market hogs, unweaned pigs and hogs no longer used for breeding.).....

Head 324 <b>3 000</b>
-----------------------------

[If no hogs are on the total acres operated, go to item 4.]

3. Are any of the (item 2) hogs or pigs owned by someone else?

Yes - 3a. How many hogs and pigs owned by someone else were on this operation on June 1?.....

Head 322
-------------

3b. Who owns the hogs and pigs?.....

3c. Is this hog owner a contractor?

- Yes
- No

(Owner Name, Address, & Phone Number)	
Name _____	_____
Address _____	_____
City, St., Zip _____	_____
Phone _____	_____

No - [Continue.]

OFFICE USE STATE FIPS
6326

OFFICE USE POID
327



# Independent and Contractor

## Hogs Owned by this Operation

4. On June 1, how many hogs and pigs did this operation own regardless of location?  
(Include hogs or pigs being raised under contract for you by someone else.).....

	Head
300	5 000

[If no hogs owned, go to Section H.]

5. Are any of these (item 4) hogs located on someone else's land or hog facility?

Yes - 5a. On whose land or hog facility  
are these hogs located?.....

Name	Record as much information as possible
Address	about the person (contractee) who is
City, St., Zip	raising the 2,000 hogs
Phone	

No - [Continue.]

6. Have you raised hogs or pigs under any other business name during the last 12 months?

Yes - 6a. What is the other name?.....

Name	_____
Address	_____
City, St., Zip	_____
Phone	_____

No - [Continue.]

OFFICE USE

326
-----



# Thank you!



**United States Department of Agriculture**  
National Agricultural Statistics Service





[Click here to  
return to the  
List of Topics](#)

# Section H

## Total Cattle and Calves



**Kyle Nelson**

# Section H - Why?





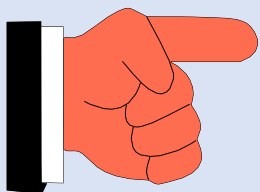
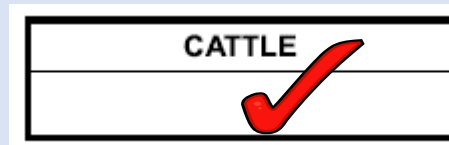
# Section H – CATTLE BOX

**[Is the CATTLE BOX checked on Page X]?**

Yes - [Continue.]

No - [Go to Section I - Sheep and Lambs.]

- Check to see if the CATTLE BOX was checked in Sec. C



- *Remember to follow the enumerator instructions very carefully*
- *Section H must be completed or estimated for every agricultural tract that has the CATTLE Box checked in Section C*



# Section H – Screening Questions



## SECTION H - TOTAL CATTLE AND CALVES

1. On June 1, were any cattle and calves, regardless of ownership, on the total acres operated?

(Cattle and calves on grazing land leased on a fee per head or animal unit month (AUM) basis should be included by the cattle owner, excluded by the land owner.)

Yes - [Continue with item 2.]

No - 1a. Were any cattle or calves on the total acres operated at any time during the period of January 1, *(year)* through May 31, *(year)*?

Yes - [Enter 1 in code Box 493, then go to item 6.]

No - Will there be any cattle on the total acres operated from now through December 31, *(year)*?

Yes = 1    Don't Know = 2    No = 3

Enter code, then  
go to Section I.

Code

493



# Section H – Inventory



2. Of the total number of cattle and calves on hand June 1, how many were:

Head

a. Beef cows, including beef heifers that had calved?.....	+	351
b. Milk cows, including any dry cows? (Exclude any heifers not yet freshened.) .....	+	352
c. Bulls weighing 500 pounds or more?.....	+	353
d. Heifers that had not calved, weighing 500 pounds or more:		
(i) for beef cow replacement?.....	+	354
(ii) for milk cow replacement?.....	+	355
(iii) other heifers 500 pounds or more?.....	+	356
e. Steers weighing 500 pounds or more?.....	+	357
f. Heifer, steer, and bull calves weighing less than 500 pounds, including newborn calves? .....	+	358
3. [Add items 2a through 2f] Then the total cattle and calves on hand June 1 was:.....	=	350

Is that correct? [If not, make corrections.]

# Section H – Operation Types

## Cow/Calf Operation



## Feedlot Operation



## Stocker Operation



## Dairy Operation





# Section H – On Feed



## Cattle and Calves On Feed

We need to know about the cattle and calves on feed for the slaughter market. Their ration would include grain, silage, hay, or protein supplement.

- INCLUDE cattle being fed by you for others.
- EXCLUDE any of your cattle being custom fed in feedlots operated by others.
- EXCLUDE cattle being "backgrounded only" for sale as feeders, for later placement on feed in another feedlot, or to be returned to pasture.
- EXCLUDE cows and bulls on feed.

4. How many cattle and calves were on feed June 1 that will be shipped directly from your feedlot to the slaughter market?.....

Head

652
-----



# Section H – Calf Crop



## Calf Crop for (Year)

(Calves born on grazing land leased on a fee per head or animal unit month (AUM) basis should be included by the cattle owner, excluded by the land owner.)

5. Of the cows and heifers on the total acres operated on June 1, how many are expected to calve during the period June 1 through December 31, (year) ?.....

Head	
	361

6. Of the calves born on the total acres operated during the period January 1 through May 31, (year) , how many: (EXCLUDE calves purchased.)

- a. were on hand June 1?.....
- b. were sold, moved off the total acres operated, or slaughtered before June 1?.....
- c. had died before June 1? (EXCLUDE calves born dead.).....

Head	
+	363
+	364
+	365
=	362

7. [Add items 6a through 6c]  
Then the total calves born January 1 through May 31, (year) was:.....



# Section H – Data Relationships



- Data Relationships to Consider:
  - If the operation has beef cows or milk cows, there should be a calf crop accounted for in question 6.
  - Calves on hand June 1 in question 6 should be consistent with calves reported in question 2.
  - The total calf crop for the entire year (questions 5 and 7 combined) should be close to the number of cows in question 2.

Section I: Sheep and Lambs  
Section J: Goats and Kids  
Section K: Equine

[Click here to  
return to the  
List of Topics](#)



Jenna Bates  
Southern Plains Region



**United States Department of Agriculture**  
National Agricultural Statistics Service





# Sections I & J

## Sheep and Lambs & Goats and Kids

- Must be completed for every agricultural tract.
- **This Year: Are Any Present? Refusal or Inaccessible?**
  - **Please observe and note as much as possible**
    - Do you see any sheep, lambs, goats or kids?
    - What kind? (Angora, Milk, or Meat & Other)
    - How many?



# Section I – Sheep and Lambs By Location or Ownership

## Eastern States

1. On June 1, were any sheep or lambs, regardless of ownership, **on the total acres operated**?

(INCLUDE Barbados and all hair breed sheep. Sheep and lambs on grazing land leased on a fee per head or animal unit month (AUM) basis should be included by the sheep owner, excluded by the land owner.)

## Western States

1. On June 1, did this operation **own** or custom feed any sheep or lambs at any location?

(INCLUDE Barbados and all hair breed sheep.)



# Section J - Goats

## By Location or Ownership

### Eastern States

1. On June 1, were any goats or kids, regardless of ownership, on the total acres operated?

### Western States

1. On June 1, did this operation own any goats or kids at any location?



# Section K - Equine

Provides indications of State and U.S. inventories of:

- Horses
- Ponies
- Mules
- Donkeys and Burros



Also provides information for states who conduct special projects for the equine industry



# Section K - Equine

1. On June 1, were there any horses, ponies, mules, donkeys or burros, regardless of ownership, on the total acres operated?

Yes - [Continue with item 2.]     No - [Go to Section L.]

2. On June 1, how many [species] regardless of ownership, were on the total acres operated?..... Number

	Horses or Ponies	Mules, Donkeys or Burros
209	208	
211		212

3. How many of the (item 2) [species] does this operation own?..... Number



# Thanks Everyone



**United States Department of Agriculture**  
National Agricultural Statistics Service



Section L: Other Agricultural Information

Section M: Land Values

Section N: Economic Data for Entire Operation

[Click here to  
return to the  
List of Topics](#)



Jessica Lemenager  
Northwest Region



**United States Department of Agriculture**  
National Agricultural Statistics Service



# Section L - Other Agricultural Information

## Section L - Other Agricultural Information

### Agricultural Labor

1. During 20XX, will this operation have anyone on the payroll to do agricultural work? (INCLUDE full-time and part-time workers, paid family members, and hired managers. EXCLUDE contract labor.)

Yes = 1    Don't Know = 2    No = 3.....

Code

990

[If Yes] 1a. What will be (was) the largest number, including paid family members, on the payroll on any one day?.....

Number

989



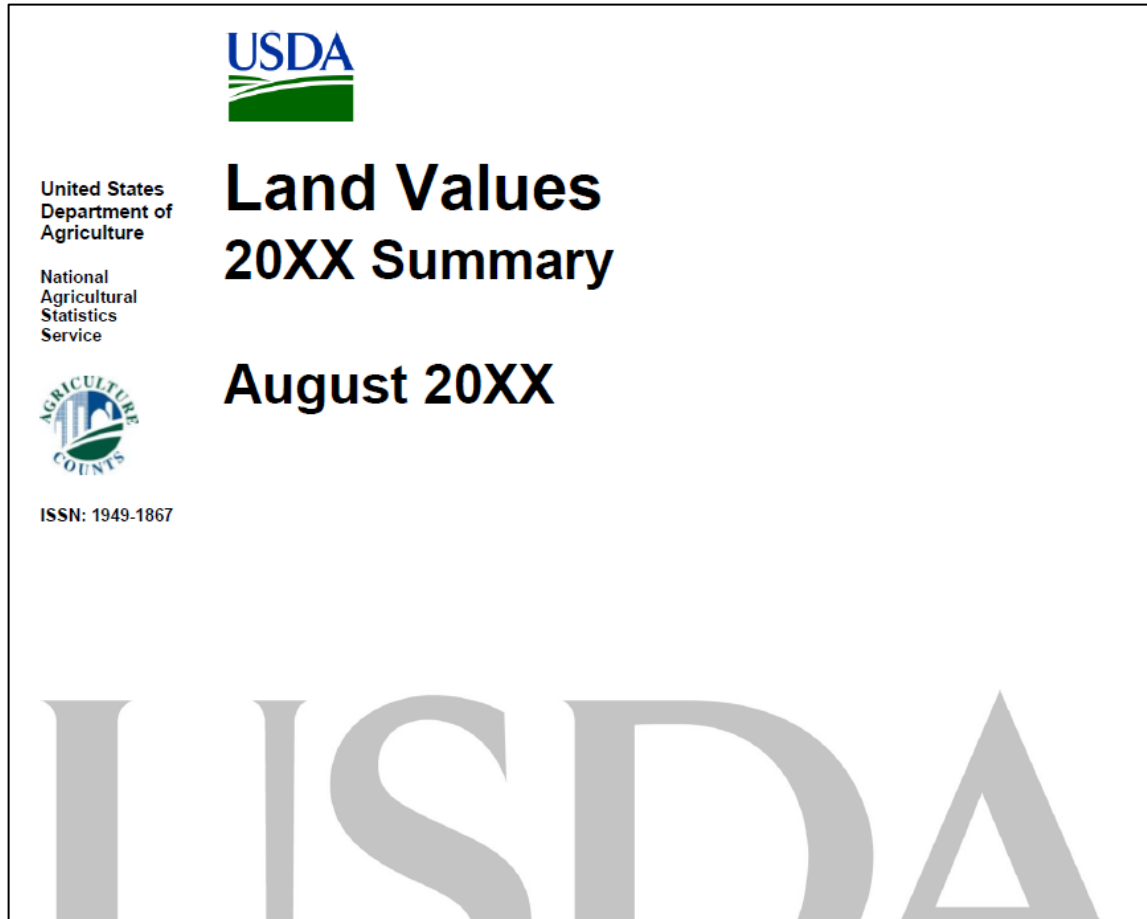


# Section L - Other Agricultural Information

- Key Phrases:
  - “On the Payroll”: Will the worker receive a W-2 or 1099 from the farmer at the end of the year?
  - “To Do Agricultural Work”: Refer to Include/Exclude Statements in Interviewer’s Manual
- “YES” or “DON’T KNOW”: operator could be included in the Labor Sample.



# Section M - Land Values



- Data Uses
  - Monitor financial health
  - Design farm programs
  - Measure year-to-year fluctuations of land values and net worths



# Section M - Instructions

## Section M - Land Values

These next few questions are about the market value of land and buildings and are only used to estimate state and national farm land values.

- Market value is the value at which farm or ranch land could be sold under current market conditions and can be estimated based on recent appraisals or sales in your area.
- Market value is not a tax-assessed value. Your responses are not used for taxation purposes, either at the local, state or federal level.
- Your response will not be disclosed to any other government agencies.



# Entire Farm - Market Value of Land and Buildings

## Entire Farm - Market Value of Land and Buildings

1. What is your estimate of the total market value of all land, dwellings, barns and other buildings on the total acres operated? (Total acres operated reported in Section E, Item 3 code 900).....

Total Market Value

1990
------

a. Since June 1, 20XX did this market value increase, decrease or stay the same?

Increase..... [Enter Code 1, then go to item b.]

Decrease..... [Enter Code 2, then go to item b.]

No Change..... [Enter Code 3, then go to Question 2.].....

Code

518
-----

b. What percent change best describes the increase or decrease in the total market value since June 1, 20XX?.....

Percent

519
-----



# Tract Acres - Market Value per Acre

Now I would like to ask about the market value of the land you operate inside the red segment boundary that were reported in Section D.

[ENUMERATOR ACTION: Refer respondent to segment photo and tract acres recorded in Section D. ]

2. For the acres reported within this red boundary (Section D), I need your best estimate of the market value of these acres by type of land. EXCLUDE the value of all dwellings and buildings.

[Check (√) if reported in Section D.]

	Dollars Per Acre
<input type="checkbox"/> a. Cropland? (INCLUDE fruit, nut, berry, vineyard and nursery land.).....	410
<input type="checkbox"/> b. Non-irrigated cropland? (INCLUDE fruit, nut, berry, vineyard and nursery land.).....	411
<input type="checkbox"/> c. Irrigated cropland? (INCLUDE fruit, nut, berry, vineyard and nursery land.).....	412
<input type="checkbox"/> d. Permanent pasture, grazing or grassland?.....	413



# Section M - Land Values

- If the respondent is unable to report or give a reasonable estimate of the total value, write **DK** **next to the cell.**
  - In CAPI, enter DK or leave blank
- Unusually high or low market values should be accompanied by a comment, for example:
  - Sold Development Rights
  - High Value Neighborhoods



# Section N - Economic Data

1. Please classify the operation in terms of the gross value of sales and government agricultural payments in 20XX.

## INCLUDE

- sales of all crops, livestock, poultry, and livestock products (milk, eggs, etc.) sold in 20XX.
- the value of hay, silage, and other crops harvested, but not sold.
- the value of all crops, livestock, and poultry produced under contract in 20XX.
- Landlord's share of government payments and crops sold in 20XX.

EXCLUDE dollars received on land rented to others.



# Section N - Value of Sales

Total Value		Code
\$ 0 ---- \$ 999 .....	1	<input type="checkbox"/>
\$ 1,000 ---- \$ 9,999 .....	2	<input type="checkbox"/>
\$ 10,000 ---- \$ 49,999 .....	3	<input type="checkbox"/>
\$ 50,000 ---- \$ 99,999 .....	4	<input type="checkbox"/>
\$ 100,000 ---- \$ 249,999 .....	5	<input type="checkbox"/>
\$ 250,000 ---- \$ 499,999 .....	6	<input type="checkbox"/>
\$ 500,000 ---- \$ 999,999 .....	7	<input type="checkbox"/>
\$ 1,000,000 ---- \$ 4,999,999 .....	8	<input type="checkbox"/>
\$ 5,000,000 and over .....	9	<input type="checkbox"/>

Code

860
-----





# Section N - Value of Sales

## [ENUMERATOR ACTION]

2. Is the 20XX gross value of sales and government agricultural payments for this operation less than \$1,000?

Yes - [Go to Point Recording Sheet, page XX.]

No - [Go to item 3, page XX.]



# Section N - Point Recording Sheet

## Point Recording Sheet (For operations less than \$1,000 in sales)

**ENUMERATOR ACTION:** For operations with less than \$1,000 in sales, record all 20XX crops, land uses, and livestock or poultry now on the total acres operated, then go to item 3.

Cropland		Acres	Hay		Acres	Vegetables/Melons		Acres
Abandoned Crops.....	022	.	Alfalfa.....	057	.	Cantaloupes.....	296	.
Cover Crop.....	023	.	Grain.....	058	.	Cucumbers.....	297	.
CRP/WRP.....	<b>Section E</b>		Other.....	059	.	Lima Beans.....	298	.
Idle Cropland.....	025	.	<b>Woodland Crops</b>		<b>Acres</b>	Peas (green).....	299	.
Summer Fallow.....	026	.	Cut Christmas Trees....	060	.	Pumpkins.....	301	.
_____ .....	027	.	Maple (Number of Taps)	076	.	Snap Beans.....	302	.
			Short Rotation Woody Crops.....	078	.	Sweet Corn.....	303	.
			_____ .....	079	.	Tomatoes.....	304	.
						_____ .....	305	.
<b>Government Payments</b>		<b>Whole Dollars</b>	<b>Indoor Nursery</b>		<b>Square Feet</b>	<b>Livestock</b>		<b>Number</b>
CRP/WRP Payments.....	028		Mushrooms.....	134		Honey Bees (colonies).....	306	
Other Gov't Payments.....	029		_____ .....	135		Bison.....	307	
<b>Pasture/Rangeland</b>		<b>Acres</b>	<b>Outdoor Nursery</b>		<b>Acres</b>	Cattle: Milk Cows.....	468	
Cropland used only for Pasture.....	030	.	_____ .....	136	.	Cattle: All Other.....	469	
Permanent Pasture.....	031	.				Chicken/Broilers.....	310	
Woodland Pasture.....	032	.				Deer.....	311	
						Ducks.....	312	
<b>Field Crops Intended for Harvest</b>		<b>Acres</b>						
Barley.....	033	.						
Corn.....	034	.						



# Section N - Point Recording Sheet

Notes about the Point Recording Sheet:

- For CRP and WRP
  - Acres are recorded in Section E
  - Dollars recorded here

Government Payments	Whole Dollars
CRP/WRP Payments.....	028
	000

- For Woodland Crops
  - Acres: Cut Christmas Trees & Short Rotation Woody Crops
  - Taps: Maple

Woodland Crops	Acres
Cut Christmas Trees....	060
Maple (Number of Taps)	076
Short Rotation Woody Crops.....	078
	079



# Section N - Point Recording Sheet

Notes about the Point Recording Sheet:

- If the operation has less than \$1000 in sales, complete the Point Recording Sheet.
- Do not record any acres for the farmstead or waste
- Nursery Crops
  - Square Feet: Indoor nursery, floriculture, greenhouse or other horticultural crops
  - Acres: Outdoor Nursery

# Section N - Type of Farm

3. Of the farm or ranch income reported, which of these categories represents the largest portion of the gross income from the operation?

[If no income reported in 20XX, which category best describes the type of operation.]

- |  | <b>Code</b>                 |
|--|-----------------------------|
| 1 – <b>Grains, Oilseeds, Dry Beans, and Dry Peas</b> .....<br>(corn, flaxseed, grain silage and forage, grains and oilseeds, popcorn, rice,<br>small grains, sorghum, soybeans, sunflowers, straw, etc.) | 1 <input type="checkbox"/>  |
| 2 – <b>Tobacco</b> .....   | 2 <input type="checkbox"/>  |
| 3 – <b>Cotton and Cottonseed</b> .....   | 3 <input type="checkbox"/>  |
| 4 – <b>Vegetables, Melons, Potatoes and Sweet Potatoes</b> .....<br>(beets, cabbage, cantaloupes, pumpkins, sweet corn,<br>tomatoes, watermelons, vegetable seeds, etc.)                                 | 4 <input type="checkbox"/>  |
| 5 – <b>Fruit, Tree Nuts and Berries</b> .....<br>(almonds, apples, blueberries, cherries, grapes, hazelnuts, kiwifruit,<br>oranges, pears, pecans, strawberries, walnuts, etc.)                          | 5 <input type="checkbox"/>  |
| 6 – <b>Nursery, Greenhouse, Floriculture and Sod</b> .....<br>(bedding plants, bulbs, cut flowers, flower seeds, foliage plants,<br>mushrooms, nursery potted plants, shrubbery, sod, etc.)              | 6 <input type="checkbox"/>  |
| 7 – <b>Cut Christmas Trees and Short Rotation Woody Crops</b> .....  | 7 <input type="checkbox"/>  |
| 8 – <b>Other Crops and Hay, CRP and Pasture</b> .....<br>(grass seed, hay and grass silage, hops, maple syrup, mint,<br>peanuts, sugarcane, sugarbeets, CRP, etc.)                                       | 8 <input type="checkbox"/>  |
| 9 – <b>Hogs and Pigs</b> .....   | 9 <input type="checkbox"/>  |
| 10 – <b>Milk and Other Dairy Products</b> (from cows) .....  | 10 <input type="checkbox"/> |
| 11 – <b>Cattle and Calves</b> .....  | 11 <input type="checkbox"/> |

Code

862



# Thanks for Watching



**United States Department of Agriculture**  
National Agricultural Statistics Service



# Section P: Personal Characteristics and the Conclusion

[Click here to  
return to the  
List of Topics](#)



**John Stephens**  
**Pacific Regional Office**



**United States Department of Agriculture**  
National Agricultural Statistics Service



# Section P: Personal Characteristics

Purpose of this section:

- To gather information on sex, age, ethnicity, race, and length of time operating the farm pertaining to individuals involved in agriculture.



**United States Department of Agriculture**  
National Agricultural Statistics Service





# Section P: Personal Characteristics

- Collect how many people were involved in decisions for this operation in the current year.

SECTION P - PERSONAL CHARACTERISTICS				
1. In 20XX, how many men and women were involved in decisions for this operation? INCLUDE family members and hired managers. EXCLUDE hired workers unless they were a hired manager or family member.	Men		Women	
	1571		1574	
2. Answer the following for up to four individuals who were involved in the decisions for this operation as of December 31, 20XX.				
	Person 1	Person 2	Person 3	Person 4
a. Full Name	1836	1852	1872	1873

- Identify up to the four people who are involved in decisions for this operation in the current year.



# Section P: Personal Characteristics

- Full name, sex, and age of each decision maker as of December 31<sup>st</sup> of the previous year

	Person 1	Person 2	Person 3	Person 4
a. Full Name	1836	1852	1872	1873
b. Sex	1926 1 <input type="checkbox"/> Male 2 <input type="checkbox"/> Female	1586 1 <input type="checkbox"/> Male 2 <input type="checkbox"/> Female	1597 1 <input type="checkbox"/> Male 2 <input type="checkbox"/> Female	1614 1 <input type="checkbox"/> Male 2 <input type="checkbox"/> Female
c. What was the person's age on December 31, 20XX.	1925  years	1585  years	1596  years	1615  years



# Section P: Personal Characteristics

- Ethnicity and race

<p>d. Is this person of Hispanic, Latino or Spanish origin?</p>	<p>1927</p> <p>Hispanic, Latino or Spanish origin</p> <p>1 <input type="checkbox"/> Yes 3 <input type="checkbox"/> No</p>	<p>1587</p> <p>Hispanic, Latino or Spanish origin</p> <p>1 <input type="checkbox"/> Yes 3 <input type="checkbox"/> No</p>	<p>1598</p> <p>Hispanic, Latino or Spanish origin</p> <p>1 <input type="checkbox"/> Yes 3 <input type="checkbox"/> No</p>	<p>1622</p> <p>Hispanic, Latino or Spanish origin</p> <p>1 <input type="checkbox"/> Yes 3 <input type="checkbox"/> No</p>
<p>e. Race (Mark one or more)</p>	<p>Mark one or more</p> <p>2701 <input type="checkbox"/> White</p> <p>2702 <input type="checkbox"/> Black or African American</p> <p>2703 <input type="checkbox"/> American Indian or Alaska Native</p> <p>Specify Tribe:</p> <p>2733 _____</p> <p>2705 <input type="checkbox"/> Asian</p> <p>2704 <input type="checkbox"/> Native Hawaiian or Other Pacific Islander</p>	<p>Mark one or more</p> <p>1801 <input type="checkbox"/> White</p> <p>1802 <input type="checkbox"/> Black or African American</p> <p>1803 <input type="checkbox"/> American Indian or Alaska Native</p> <p>Specify Tribe:</p> <p>1833 _____</p> <p>1805 <input type="checkbox"/> Asian</p> <p>1804 <input type="checkbox"/> Native Hawaiian or Other Pacific Islander</p>	<p>Mark one or more</p> <p>1901 <input type="checkbox"/> White</p> <p>1902 <input type="checkbox"/> Black or African American</p> <p>1903 <input type="checkbox"/> American Indian or Alaska Native</p> <p>Specify Tribe:</p> <p>1933 _____</p> <p>1905 <input type="checkbox"/> Asian</p> <p>1904 <input type="checkbox"/> Native Hawaiian or Other Pacific Islander</p>	<p>Mark one or more</p> <p>1616 <input type="checkbox"/> White</p> <p>1617 <input type="checkbox"/> Black or African American</p> <p>1618 <input type="checkbox"/> American Indian or Alaska Native</p> <p>Specify Tribe:</p> <p>1619 _____</p> <p>1620 <input type="checkbox"/> Asian</p> <p>1621 <input type="checkbox"/> Native Hawaiian or Other Pacific Islander</p>



# Section P: Personal Characteristics

- Year each person began to operate any part of THIS operation and year each person began to operate ANY farm operation

f. In what year did this person begin to operate any part of THIS operation?	1930	1584	1595	1627
g. In what year did this person begin to operate ANY farm operation?	2834	1851	1871	1628



# Conclusion

## 1. Contact Information

Operator Email:		Operator Phone:	
9929	9917 Check to receive results by email <input type="checkbox"/>	9918 (    ) _____	Check if cell phone <input type="checkbox"/>

Operation Email: (if different from above)		Operation Phone: (if different from above)	
9937	9920 Check to receive results by email <input type="checkbox"/>	9936 (    ) _____	Check if cell phone <input type="checkbox"/>

Respondent Name:		Respondent Phone (if different from above)		
9912	9911 (    ) _____	Check if cell phone <input type="checkbox"/>	9910	MM DD YY
_____			Date: _____	

This completes the survey. The results will be available on the release date at: [nass.usda.gov/results](http://nass.usda.gov/results)

Thank you for your help.



# Conclusion

- Be sure to fill out the bottom of the back page!

OFFICE USE											
Response		Respondent		Mode		Enum.	Eval.	Optional Use			
1-Comp 5-R – Est 6-Inac – Est	9901	1-Op/Mgr 2-Spouse 3-Acct/Bkpr 4-Partner 9-Other	9902	2-PATI 3-PAPI	9903	9998	9900	9907	9908	9906	9916
S/E Name						<p style="color: red; text-align: center;">Can only code as Complete, Estimated Refusal, or Estimated Inaccessible</p>					



# Conclusion

- Review the complete questionnaire before entering it in CAPI on the iPad.
- Remember to include any notes taken when entering in the information from the questionnaire in CAPI on the iPad.



Thanks for all your hard work!!



**United States Department of Agriculture**  
National Agricultural Statistics Service

