



Pecan Processor and Sheller Training Materials

Below you will find links to a PowerPoint presentation, survey information sheet, and practice interviews for NASS's Pecan Processor and Sheller Inquiry. The practice interviews can be used to enter data in CATI or CAPI to get familiar with those data collection instruments.

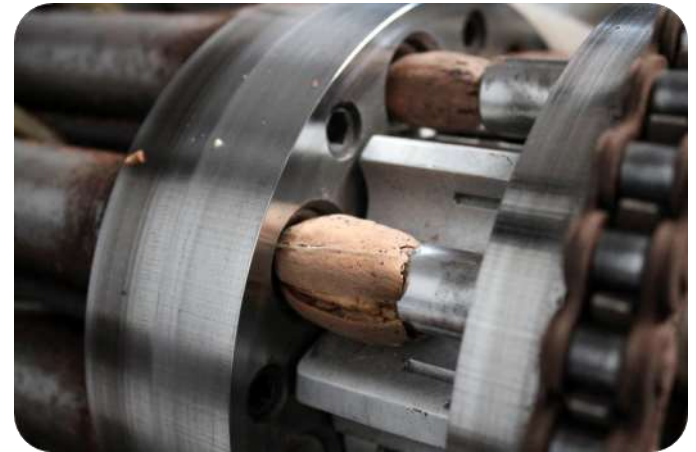
Links	Length (minutes/pages)
<u>Pecan Processor and Sheller Inquiry Overview Presentation</u>	9
<u>Pecan Processor and Sheller Inquiry Information Sheet</u>	2
<u>Pecan Processor and Sheller Inquiry Practice Interviews</u>	5

Strategic Planning and Business Services Division
Strategic Planning Branch
Workforce Performance and Staff Development Section

[Click here to return to list of materials](#)

NASS Survey Training

Pecan Shellers & Processors Inquiry



**United States Department of Agriculture
National Agricultural Statistics Service**

Workforce Performance and Staff Development Section



Survey Overview

- For the previous year pecan crop
- Collecting information from *processors* on:
- Total amount of pecans handled
 - Amount of pecans shelled
 - Unshelled pecans sold
 - Pecans in storage
- Provides valuable information to the entire pecan industry on the status of the previous year crop

General Survey Information

- Project Code: **142-Tree Nut Survey**
- Questionnaires:
 - Typically mail out the end of January
- Release:
 - *Noncitrus Fruits and Nuts-Annual*
 - Early May at 3 p.m. ET

NASS website: www.nass.usda.gov/

Introduction and Screening

- Introduction/Screening
 - Name/Address Verification
 - Use any commercial shelling equipment for pecans?
 - If “No”, end of survey. Make notes...
- For actual survey questions
 - Report for plant or plants operated the previous year
 - Report for previous year crop to date
 - Provide best estimate if exact figures are unknown
- Questions are broken out by:
 - Improved
 - Wild Native (Seedling)





Definitions

- **Native or Seedling:** Growing wild, usually unattended and not cultivated.
 - However, there are some large areas where they are well-managed and cultivated.
 - The nut is smaller than the improved type but its flavor and full firm meat make it especially adaptable for commercial uses.
- **Improved Varieties:** These trees are the result of careful grafting and budding.
 - Usually planted in managed, cultivated groves.
 - Shell is much thinner than that of the seedling and consequently its meat yield is normally higher.
 - The appearance is nicer and larger, making it a favorite of home cooks and gourmet commercial users.



Survey Questions (2)

- Keep in mind:
 - Report for plant or plants operated the previous year
 - Provide best estimate if exact figures are unknown
- Total pounds shelled (unshelled basis)
 - Of total, what is the meat equivalent production (shelled weight)
- Pecans (in shell) sold



Survey Questions (3)

- Unshelled pecans owned by plant, or possessed on consignment?
 - Of these how many do you intend to shell
- Total quantity of pecans handled
 - Shelled + sold in shell + unshelled stocks



Reluctant Responses

- Why is this important?
 - That's a good question. We contact both processors and growers to get a complete and accurate picture of pecan production and utilization for the entire crop year.
- Small operation
 - I'm glad you brought that up. All operations are important, big or small. The management practices of a smaller operation are different from the larger ones, and this is your chance to let your voice be heard. Information you provide can help others become aware of the challenges facing small operators.

Conclusion

- Remember, collecting data for the previous year pecan crop
- When in doubt, comment it out. Notes, Notes, Notes!
- Be sure to practice:
 - *Before* interviewing!
 - Fairly straight forward survey...but there are some important relationships in the questions
- Contact your supervisor or local office with any questions you may have



[Click here to return to list of materials](#)

Pecan Shellers & Processors Inquiry Survey Information Sheet

Overview:

- Collecting information from Processors
- Looking at previous year crop production
 - Pecans shelled
 - Unshelled pecans sold
 - Pecans in storage
- Project Code: 142
- Release: Non-citrus Fruits & Nuts Annual
 - Early May



Definitions:

- Improved Varieties:
 - These trees are the result of careful grafting and budding.
 - Usually planted in managed, cultivated groves.
 - Shell is much thinner than that of the seedling and consequently its meat yield is normally higher.
- Wild Native Varieties:
 - Grow wild, usually unattended and not cultivated.
 - Nut is typically smaller but flavor and full firm meat make it especially adaptable for commercial uses.

Things to Watch Out For:

- Sum of parts **must** equal
 - Shelled + Sold + Stored = Total Pecans Handled
 - For both Improved and Wild Native varieties
- Meat equivalent is usually between 40-60%

Pecan Processor and Sheller Inquiry Practice Interviews

[Click here to
return to list
of materials](#)

Practice Interview 1:

Who is responding? **Operator**

Let me verify the name, address, and phone number that I have for this operation. Is this information correct? **Yes**

Did this plant use any commercial shelling equipment to shell any 20XX crop pecans? **Yes**

From the 20XX crop, were any improved pecans handled by your plant? **Yes**

From the 20XX crop, were any seedling pecans handled by your plant? **No**

How many total pounds of 20XX improved pecans has your plant shelled to date? **250,000**

Of the 250,000 pounds shelled, what is the meat equivalent production? **145,000**

How many pounds of 20XX improved pecans were sold in the shell? **95,000**



How many pounds of unshelled 20XX improved pecans are owned by your plant, or processed on consignment, regardless of where stored? **45,000**

Of the 45,000 pounds of unshelled 20XX improved pecans owned by your plant, how many pounds do you intend to shell? **40,000**

Do you have any comments about the 20XX pecan crop? **No**

Do you make any day-to-day decisions for another farm or ranch? **No**

Would you rather have a brief summary sent to you at a later date? **Yes, by mail**



Practice Interview 2:

Who is responding? **Spouse, Kelsi Farmer**

Let me verify the name, address, and phone number that I have for this operation. Is this information correct? **Yes**

Did this plant use any commercial shelling equipment to shell 20XX crop pecans?
No

Do you make any day-to-day decisions for another farm or ranch? **No**

Would you rather have a brief summary sent to you at a later date? **No**

Practice Interview 3:

Who is responding? **Operator**

Let me verify the name, address, and phone number that I have for this operation. Is this information correct? **Yes**

Did this plant use any commercial shelling equipment to shell any 20XX crop pecans? **Yes**

From the 20XX crop, were any improved pecans handled by your plant? **No**

From the 20XX crop, were any seedling pecans handled by your plant? **Yes**

How many total pounds of 20XX seedling pecans has your plant shelled to date?
25,000

Of the 25,000 pounds shelled, what is the meat equivalent production? **12,500**

How many pounds of 20XX seedling pecans were sold in the shell? **1150**

How many pounds of unshelled 20XX seedling pecans are owned by your plant, or possessed on consignment, regardless of where stored? **45,000**

Of the 45,000 pounds of unshelled 20XX seedling pecans owned by your plant, how many pounds do you intend to shell? **33,000**

Do you have any comments about the 20XX pecan crop? **“Some of the crop appeared to have weak shells which caused more loss than normal in shelling.”**

Do you make any day-to-day decisions for another farm or ranch? **No**

Would you rather have a brief summary sent to you at a later date? **No**

[Click here to
return to list
of materials](#)

